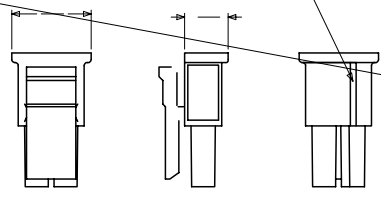
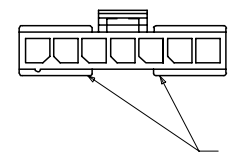
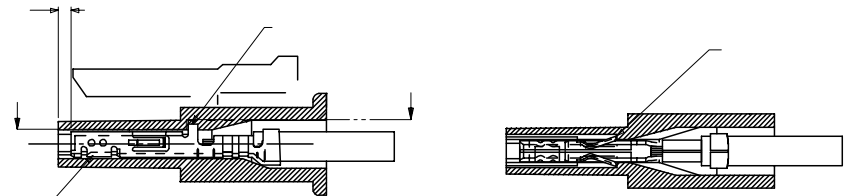
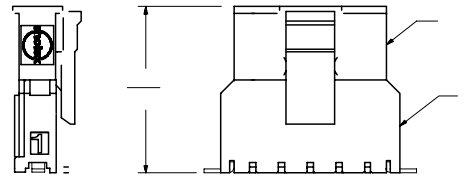
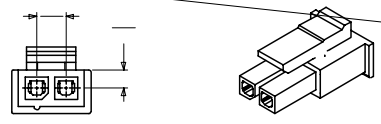
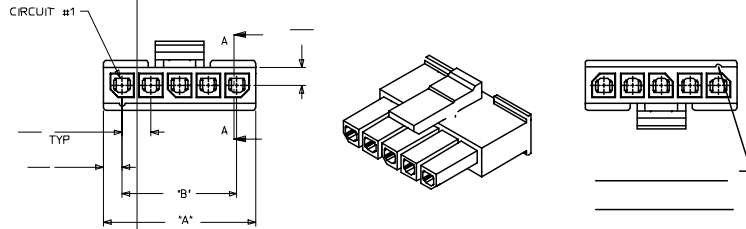


CIRCUIT #1 IDENTIFER



		DIM. "A"	DIM. "B"
02			
03			.236/6.00
04			.354/9.00
05			.472/12.00
06			.591/15.00
07			.709/18.00
08			.827/21.00
09			
10			
11			
12			



9. MOLEX RECOMMENDS THE USE OF MICRO-FIT TEST PLUG, SERIES 44242-***** WHENEVER CONTINUITY TESTING IS PERFORMED. TEST PLUGS MUST NOT BE USED TO MAKE OR BREAK UNDER LOAD. MOLEX DOES NOT RECOMMEND USING STANDARD MATING COMPONENTS FOR HARNESS TESTING PURPOSES.

11. PART CONFORMS TO CLASS 'B' REQUIREMENTS OF COSMETIC SPECIFICATION PS-45499-002.