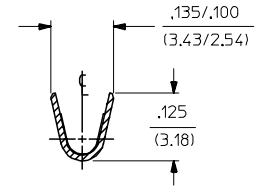
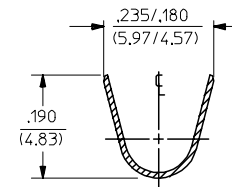
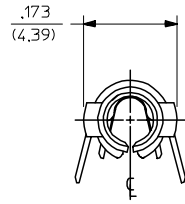
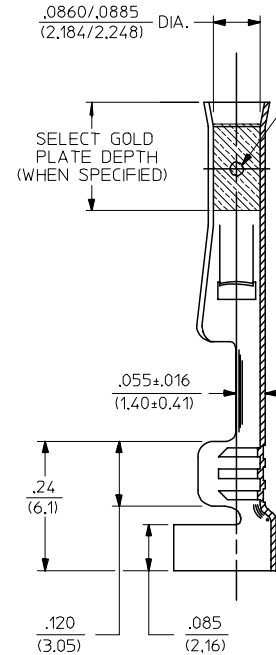
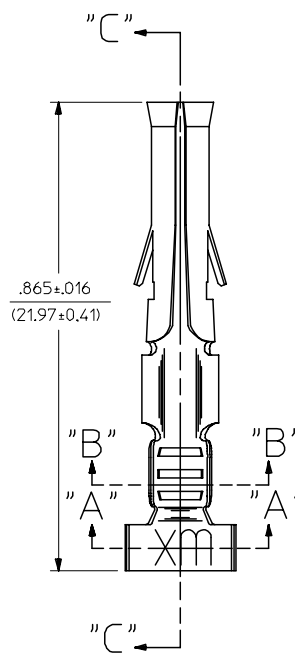


PART NO.	ENG. NO.
02-09-1205	4550-(P901)
02-09-1206	4550-(P901)L
02-09-5169	4550-A(P558)
02-09-5170	4550-A(P558)L

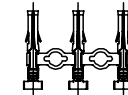


SECTION "A-A"

SECTION "B-B"



SECTION "C-C"



CHAIN FORM
FULL SCALE

LEGEND

4550-*(*)***)*
 OPTIONAL DIMPLE
 BLANK=WITH DIMPLE
 A= WITHOUT DIMPLE
 P=PREPLATE
 BLANK=POSTPLATE
 FORM
 BLANK=CHAIN
 L=LOOSE
 FINISH CODE

NOTES:

- MATERIAL: PHOSPHOR BRONZE
- FINISHES:
 901 - HOT TIN DIP .000020/(0.0005) MIN.
 558 - SELECT GOLD PLATE .000030/(0.00076) MIN. IN CONTACT AREA. OVER .000050/(0.00127) MIN. NICKEL OVERALL WITH .000010/(0.00025) MAX. GOLD FLASH.
- THIS PART CONFORMS TO PROD. SPEC. 02-09.
- TERMINAL FOR USE WITH .093/(2.36) SERIES HOUSINGS AND WILL ACCEPT 14 THRU 20 AWG WIRE.
- INSERTION FORCE: 3.5 LBS. MAX. WHEN TERMINAL IS INSERTED INTO AN .093 SERIES HOUSING.
- RETENTION: 20 LBS. MIN. FROM HOUSING.

TRANSLATED TO ME10 EC NO: UCP2004-2611 DRAWN: JERNY 2004/07/15 CHKD: AELHAG 2005/01/17 APPR: FSMTH 2005/01/18	QUALITY SYMBOLS 	GENERAL TOLERANCES (UNLESS SPECIFIED)		DIMENSION STYLE IN/MM		SCALE 6:1	DESIGN UNITS INCH	THIRD ANGLE PROJECTION	
		4 PLACES ± --- ± ---	GWC	DRAWN BY GWC	DATE 1991/05/02	TITLE CRIMP TERMINAL, FEMALE .093 DIA., 14-20 AWG WIRE			
		3 PLACES ± --- ± .010	RW	CHECKED BY RW	DATE 1991/05/02				
		2 PLACES ± 0.25 ± .014		APPROVED BY GWF	DATE 1991/05/02	MATERIAL NO. MOLEX INCORPORATED			
1 PLACE ± 0.35 ± ---		MATERIAL NO. SD-4550-*		DOCUMENT NO.	SHEET NO. 1 OF 1				
ANGULAR ±1/2°		DRAFT WHERE APPLICABLE MUST REMAIN WITHIN DIMENSIONS		SEE CHART		THIS DRAWING CONTAINS INFORMATION THAT IS PROPRIETARY TO MOLEX INCORPORATED AND SHOULD NOT BE USED WITHOUT WRITTEN PERMISSION			