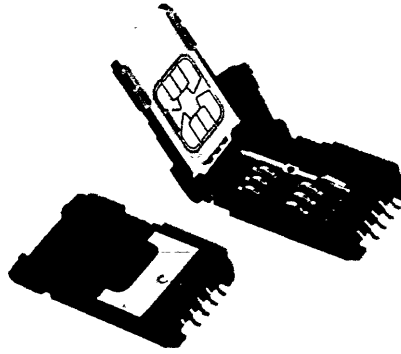


300, 0620
300, 0632

CCM03 MK I



The CCM03 MK I connectors are dedicated for Micro SIM/SAM Cards and offer two features which are not yet available in the CCM03 MK II:

- a card detection switch
- stand-offs which allow components to be mounted underneath the connector.

Features

- Available with 6 surface mount contacts, plus an optional blade switch to detect when the card is inserted and the cover closed.
- The 1.9 mm (0.007) stand-off option offers significant PCB space savings by allowing other components to be mounted underneath the connector.
- The molding is polarized so that the cover can only be closed if the card is correctly inserted.

Construction

Contacts	Copper alloy
Plating	Contact area : Gold over Nickel Terminals : Tin lead (2μ min)
Moldings	Thermoplastic UL 94V-0 rated
Slide lock/Metal cover	Stainless steel

Mechanical data

Number of Contacts	6
Mechanical life	5,000 cycles min
Card insertion force	1 N max
Card extraction force	1 N max
Contact force	0.25 N min / 0.5 N max
Slide locking force	3.5 N max
Vibration	Frequency 10 to 500 Hz. Acceleration 50m/s ² Duration 6 hours - amplitude 0.35 mm (0.014) Max electrical discontinuity 1μs
Shock	Peak value 500 m/s ² - Duration 11 ms 3 shocks in each direction of each axis Max electrical discontinuity 1 μs

Electrical data

Insulation resistance	1,000 MΩ min
Contact resistance max	100 mΩ max
Switching current	10 μA min / 1 A max
Dielectric strength	750 Vrms min
Card detection switch	Normally open (closes when card inserted and cover is shut)
Rc card detection switch	100 mΩ max
Dielectric strength card detection switch	250 Vrms min
Switch current rating	1 mA min / 10 mA max
Maximum switch power	0.2 VA

Environmental data

Operating temperature	-40°C to +85°C
Soldering temperature	Temperature/time profile acc. to CECC00802 para. 6.1, Fig. 3 with peak temperature 250°C
Damp heat	IEC 512 test number 11c (10 days)
Salt mist	IEC 512 test number 11f (96 hours)

Ordering code

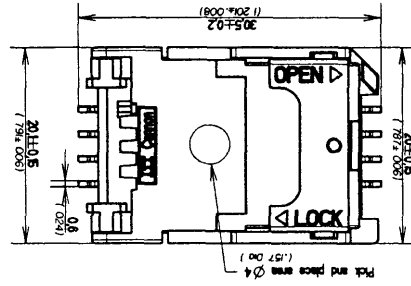
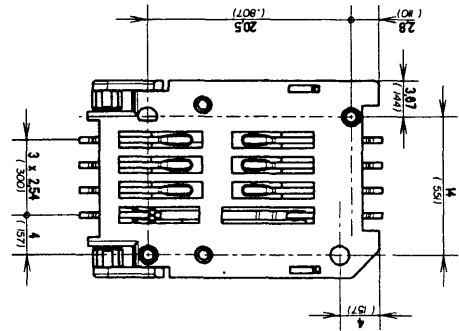
Part Number	Switch	PCB Stand-offs	PCB Holes Diameters	Qty per reel	On Tray
CCM03-0	No	No	2.0 mm (0.008) ^{+0.1} ₀		300
CCM03-0-1	No	No	2.0 mm (0.008) ^{+0.1} ₀	750	
CCM03-0NO	Yes	No	2.0 mm (0.008) ^{+0.1} ₀		300
CCM03-0NO-1	Yes	No	2.0 mm (0.008) ^{+0.1} ₀	750	
CCM03-312	No	Yes	1.6 mm (0.006) ^{+0.1} ₀	550	
CCM03-313	Yes	Yes	1.6 mm (0.006) ^{+0.1} ₀	550	

Packaging

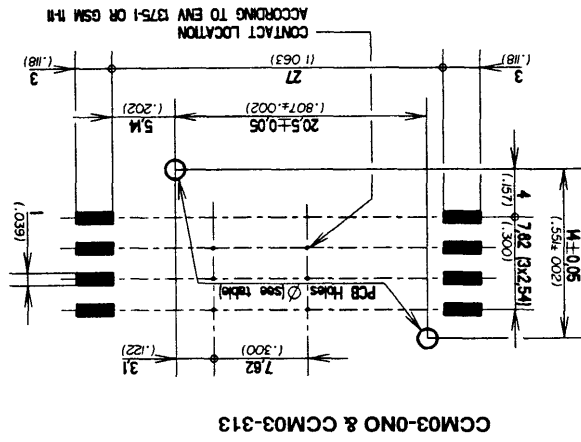
300 per tray. 550 or 750 pieces per reel, 5 reels per box.

CCM03 MK I

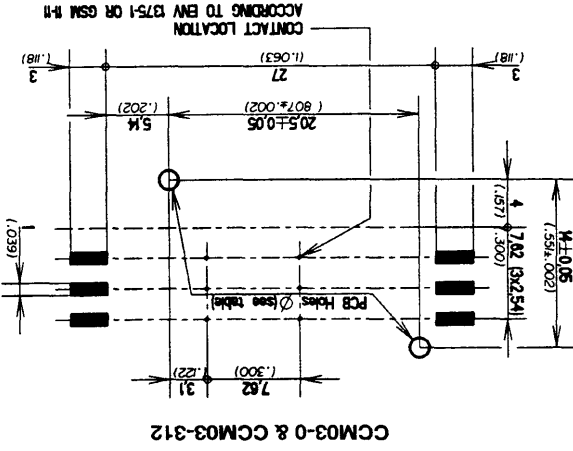
Dimensional Drawings



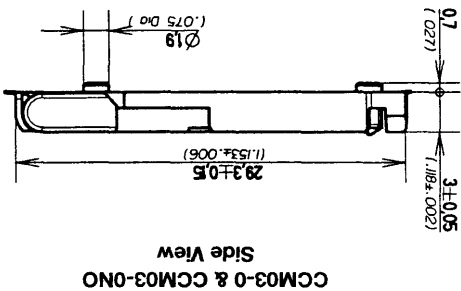
PCB Layout



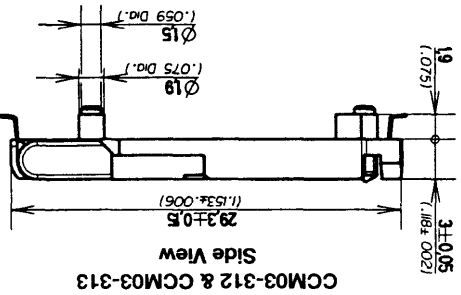
CCM03-0NO & CCM03-313



CCM03-0 & CCM03-312



CCM03-0 & CCM03-0NO



CCM03-312 & CCM03-313