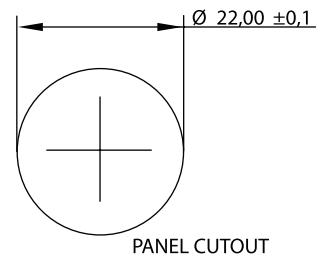


# Q-SERIES 22mmØ Panel Mounting LED Indicator

## Product Specification

### Distinctive Features and Specifications

- 22mm panel mounting LED indicator
- 18mm coloured diffused epoxy lens
- Bright chrome, black chrome and satin grey, plated brass bezel finish
- Bright chrome, satin grey, gold and black ABS plastic bezel finish
- Prominent and flush bezel styles
- 5.5VDC – 220VAC
- (2.8 x 0.8) terminals, pins or (200mm long) wire terminations
- IP67 sealing option (EN60529)
- Supplied with fixing nut and spring washer



NB: UL Recognised Component

### TECHNICAL SPECIFICATIONS

Switch Voltage	Operating Voltage V <sub>op</sub> (Min to Max)	Operating Current I <sub>op</sub> (Typical All Types)
5.5VDC (No Resistor)	5.0 to 6.0VDC	20mA
12VDC	10.8 to 13.2VDC	20mA
24VDC	21.6 to 26.4VDC	20mA
28VDC	25.2 to 30.8VDC	20mA
110VAC	99 to 121VDC	6mA
230VAC	207 to 253VDC	3mA
Intensity (Typical) at I <sub>op</sub> Standard	Prominent (all voltages)	Flush (all voltages)
HE Red	80mcd	70mcd
Green	95mcd	70mcd
Yellow	60mcd	60mcd
Blue	120mcd	100mcd
White	350mcd	200mcd
Bi-colour (Typical) (Red/Green)	80/50mcd	80/50mcd
Tri-colour (Typical) (Red/Green/Yellow)	80/50/50mcd	80/50/50mcd
Bi-colour - The colour is changed by reversing the polarity of the supply voltage.		
Tri-colour - The indicator has red and green LEDs, when both connected yellow is produced.		
Luminous intensity will be reduced with lower operating current.		
For super bright versions please consult APEM		

**Max Reverse Voltage:** 5V

**Viewing Angle:** 100° (dependant on model)

**Life Expectancy:** 100,000 hours

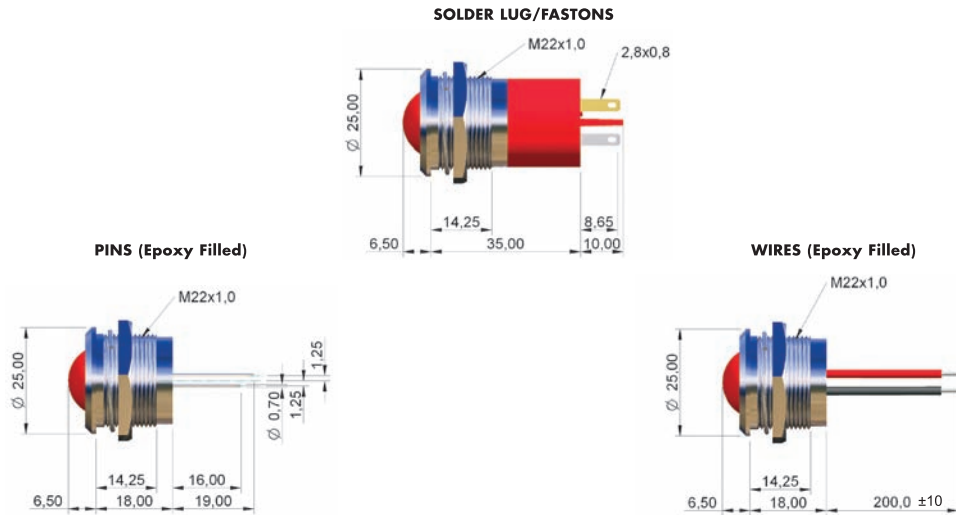
**Operating Temperature Range:** -40 to +85°C

Note: The operating voltage must not be exceeded by more than 10% as this will result in reduced life expectancy.  
The company reserves the right to change specifications without notice.

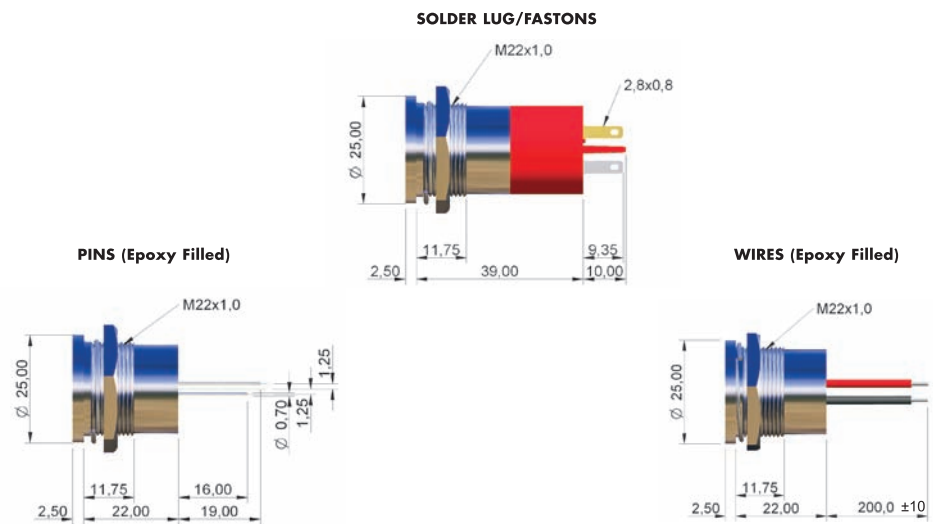
# Q-SERIES 22mmØ Panel Mounting LED Indicator

## Technical Drawings

### PROMINENT BEZEL



### FLUSH BEZEL



Note: The company reserves the right to change specifications without notice.

[www.apem.com](http://www.apem.com)

# Q-SERIES 22mmØ Panel Mounting LED Indicator

## Ordering Overview

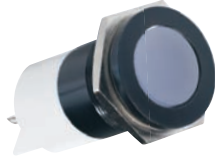
### STANDARD OPTIONS

The Q22 Series is available with a range of standard options, to specify your LED, simply choose one option from each column. An example is shown below.

SERIES	MOUNTING HOLE	BEZEL STYLE	TERMINALS	BEZEL FINISH	TYPE OF ILLUMINATION	LED COLOUR	VOLTAGE	SEALING	OPTIONS
Q	22 = Ø22mm	Metal P = Prominent F = Flush Plastic PP = Prominent FP = Flush	1 = Solder Lugs/Fastons (2.8 x 0.8) 4 = Pins 5 = Wires	Metal C = Bright Chrome B = Black Chrome G = Satin Grey Plastic CP = Bright Chrome BP = Black GP = Satin Grey AU = Gold	XX = Fixed Light KK = Flashing Light (only up to 28VDC) YY = Bi-colour ZZ = Tri-colour	R = Red G = Green Y = Yellow B = Blue W = White RG = Red/Green RY = Red/Yellow GY = Green/Yellow RYG = Red/Yellow/Green	05 = 5VDC 12 = 12VDC 12A = 12VAC/DC 24 = 24VDC 24A = 24VAC/DC 28 = 28VDC 28A = 28VAC/DC 110 = 110VAC 220 = 220VAC	(Blank) = Unsealed E = IP67	DL = Daisy Chain LT = Lamp Test

#### Example Q22F1BPXXW28EDL

Ø22mm, flush bezel, solder lug terminals, black plastic finish, fixed light, white, 28volt DC LED, IP67 Panel Seal, Daisy Chain



- Gold Faston terminal denotes Anode (+), silver terminal denotes Cathode (-)
- Standard wire length is 200mm, red wire denotes Anode (+), black wire denotes Cathode (-) for other wire lengths consult APEM
- For LEDs with alternate voltages consult APEM
- Bi-colour LEDs, by connecting the gold Faston (+) one colour is produced, by reversing the supply voltage another colour is produced – Bi-colours are available up to 28VDC
- Take care when soldering to the Faston terminals
- Pin and Wire options are epoxy sealed at the rear of the bezels
- The Tri-colour LED has red and green LEDs when both are connected yellow is produced
- Standard Tri-colour Faston terminals are two Anodes (+) and one Cathode (-)
- Tri-colour wires are one red (+) and one green (+) Anode and one black (-) Cathode
- Tri-colour pins are centre (-) cathode, shortest (+) anode pin green, longest (+) anode pin red
- Maximum panel thickness: Prominent = 12mm, Flush = 10mm
- Plastic bezel material: ABS
- Daisy chaining option - has negative (Cathode) terminals linked (3 x Fastons)
- Lamp test facility option (4 x Faston)