
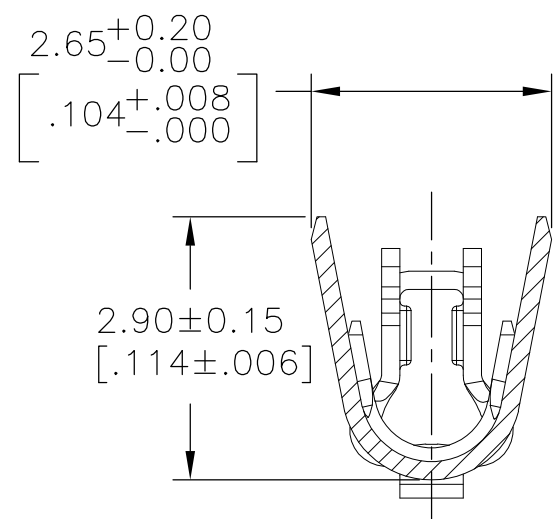
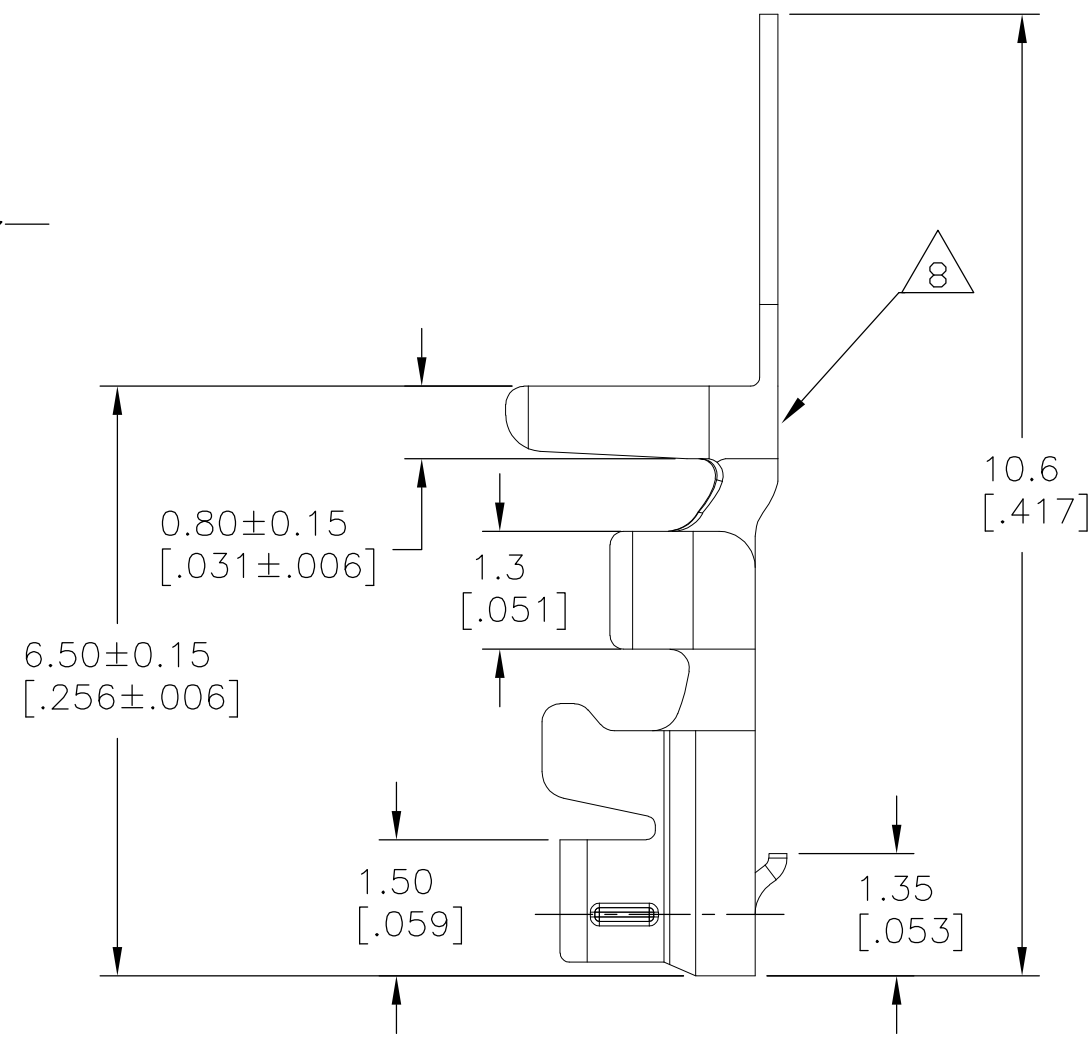
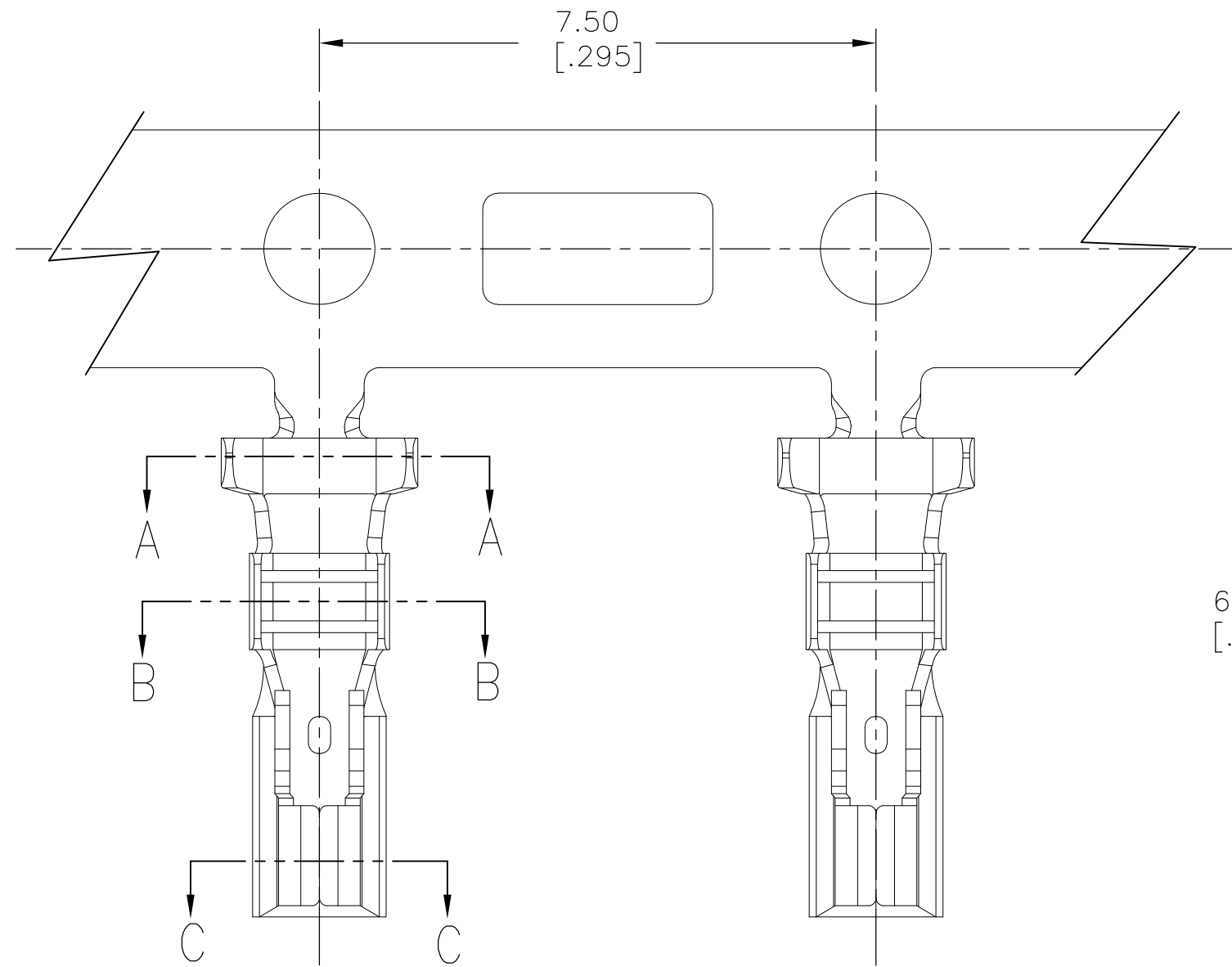


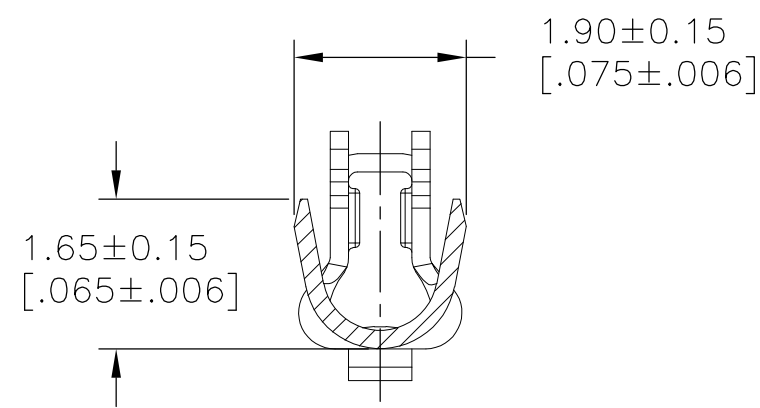
THIS DRAWING IS UNPUBLISHED. RELEASED FOR PUBLICATION  
 © COPYRIGHT BY TYCO ELECTRONICS CORPORATION. ALL INTERNATIONAL RIGHTS RESERVED.

LOC		DIST		REVISIONS			
P	LTR	DESCRIPTION	DATE	DWN	APVD		
GP	00	B	SEE LAST SHEET	22JUL10	DH	JE	

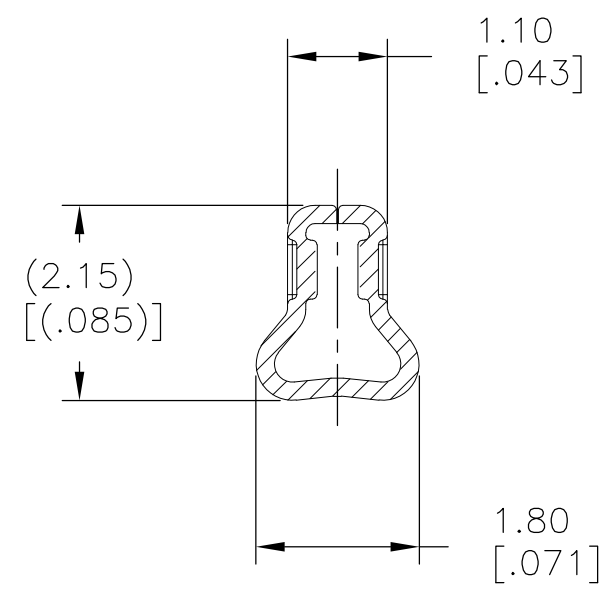
- MATERIAL: PHOSPHOR BRONZE
  - FINISH: TIN PLATE, 1.27 $\mu$ m[.000050] MIN  
UNDER PLATE: NICKEL, 0.76 $\mu$ m[.000030] MIN
  - NOTE DELETED.
  - CONTACTS COATED WITH ANTI-FRETTING LUBRICANT.
  - CONTACT IS RoHS COMPLIANT.
  - WIRE RANGE: 22-26 AWG
  - INSULATION RANGE: 1.3-1.7[.051-.067]
-  TE LOGO TO BE LOCATED APPROXIMATELY WHERE SHOWN.



SEC A-A




SEC B-B



SEC C-C


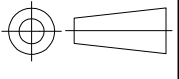
2110989-1  
 PART NUMBER

THIS DRAWING IS A CONTROLLED DOCUMENT.		DWN	C.ROHLER	30SEP2009	 Tyco Electronics Corporation Harrisburg, PA 17105-3608																	
DIMENSIONS:		CHK	C.ROHDE	30SEP2009																		
mm	TOLERANCES UNLESS OTHERWISE SPECIFIED:	APVD	C.ROHDE	30SEP2009																		
<table border="0"> <tr><td>0 PLC</td><td>±</td><td>-</td></tr> <tr><td>1 PLC</td><td>±</td><td>-</td></tr> <tr><td>2 PLC</td><td>±</td><td>0.13[.005]</td></tr> <tr><td>3 PLC</td><td>±</td><td>-</td></tr> <tr><td>4 PLC</td><td>±</td><td>-</td></tr> <tr><td>ANGLES</td><td>±</td><td>-</td></tr> </table>		0 PLC	±	-				1 PLC	±	-	2 PLC	±	0.13[.005]	3 PLC	±	-	4 PLC	±	-	ANGLES	±	-
0 PLC	±	-																				
1 PLC	±	-																				
2 PLC	±	0.13[.005]																				
3 PLC	±	-																				
4 PLC	±	-																				
ANGLES	±	-																				
MATERIAL	FINISH	WEIGHT	SIZE	CAGE CODE	DRAWING NO	RESTRICTED TO																
-	-	-	A2	00779	C=2110989	-																
CUSTOMER DRAWING			SCALE	12:1	SHEET	1 of 2																
			REV	B																		

THIS DRAWING IS UNPUBLISHED. RELEASED FOR PUBLICATION  
 © COPYRIGHT BY TYCO ELECTRONICS CORPORATION. ALL INTERNATIONAL RIGHTS RESERVED.

LOC	DIST	REVISIONS					
GP	00	P	LTR	DESCRIPTION	DATE	DWN	APVD
		-		SEE SHEET 1	-	-	-

2110989					STOCK DISPOSITION			
					A. CONTINUE AS IS		D. USE OLD FIRST	
					B. REWORK		E. PARTS TO CONFORM	
					C. SCRAP		F. OTHER	
					INVENTORY	WORK IN PROCESS	SUPPLIER ORDERS	OPEN CUST ORDERS
					(A,B,C,D,E,F)	(A,B,C,F,)	(A,E,F)	(A,E,F)
DATE	REV	CHANGES	REASON	APPROVAL				
30SEP2009	1	PRELIMINARY		ROHDE (ROHLER)				
29OCT2009	2	NOTE 2: REVISED PLATING NOTE 3: DELETED		ROHDE (ROHLER)	-	-	-	-
18FEB2010	A	REVISED PER ECO-10-002780	ENGINEERING CHANGE	EABY (HUMBERT)	-	-	-	-
22JUL2010	B	REVISED PER ECO-10-014947	ENGINEERING CHANGE	EABY (HUMBERT)	-	-	-	-

THIS DRAWING IS A CONTROLLED DOCUMENT.		DWN C.ROHLER 30SEP2009	 Tyco Electronics Corporation Harrisburg, PA 17105-3608	
DIMENSIONS: mm		CHK C.ROHDE 30SEP2009		
		APVD C.ROHDE 30SEP2009	NAME CONTACT, ECONOMY POWER 2.5	
TOLERANCES UNLESS OTHERWISE SPECIFIED: 0 PLC ± - 1 PLC ± - 2 PLC ± 0.13[.005] 3 PLC ± - 4 PLC ± - ANGLES ± -		PRODUCT SPEC -	SIZE A2	
MATERIAL -		APPLICATION SPEC -	CAGE CODE 00779	DRAWING NO C=2110989
FINISH -		WEIGHT -	RESTRICTED TO -	
CUSTOMER DRAWING			SCALE 12:1	SHEET 2 of 2
			REV B	

2110989