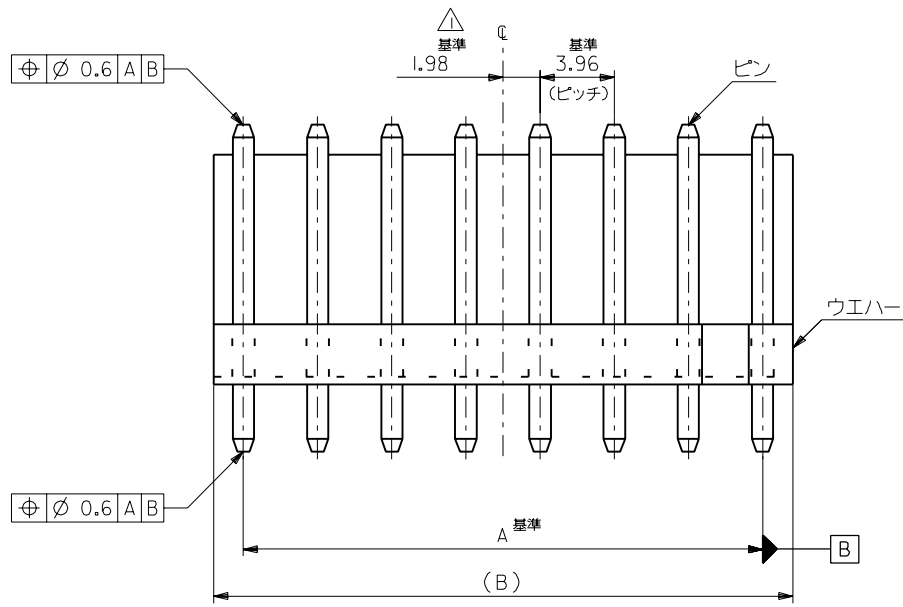


DIMENSIONS IN METRIC DO NOT SCALE DRAWING

EDP NO. 09-65-2**8

ENG. NO. SD-5273-NA



注記

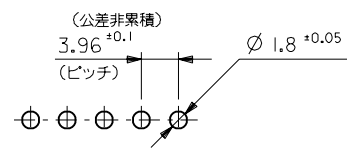
△全極数が偶数の場合のみ適用。

2.材質

ウエハー： 66ナイロン，UL 94V-2
 ピン： 黄銅，銅下地錫メッキ (□1.14X17.45)

⊕ ∅ 0.6 A B

⊕ ∅ 0.6 A B



基板取付穴推奨寸法

| | | | | |
|-------|-------|------------|----------|----|
| 46.76 | 43.56 | 09-65-2128 | 5273-12A | 12 |
| 42.8 | 39.6 | ▲ -2118 | ▲ -11A | 11 |
| 38.84 | 35.64 | ▲ -2108 | ▲ -10A | 10 |
| 34.88 | 31.68 | -2098 | -09A | 9 |
| 30.92 | 27.72 | -2088 | -08A | 8 |
| 26.96 | 23.76 | -2078 | -07A | 7 |
| 23 | 19.8 | -2068 | -06A | 6 |
| 19.04 | 15.84 | -2058 | -05A | 5 |
| 15.08 | 11.88 | -2048 | -04A | 4 |
| 11.12 | 7.92 | ▼ -2038 | ▼ -03A | 3 |
| 7.16 | 3.96 | 09-65-2028 | 5273-02A | 2 |
| B | A | EDP NO. | ENG. NO. | 極数 |

| | | | | | |
|-------------------------|-------|---------------------------|----------------------|----------|---------|
| 角度 ANGLE | ±3° | | | | |
| 30以上 OVER | +0.3 | | | | |
| 10以上 30未満 UNDER | +0.25 | C | 変更&再作図 (J90379) | S.M. | 09/5/12 |
| 10未満 UNDER | +0.2 | 記号 LTR | 変更内容 REVISION RECORD | DR. CHK. | 日付 DATE |
| 一般公差 GENERAL TOLERANCES | | REVISE ONLY ON CAD SYSTEM | | | |

| | |
|------------------------------|------------------------|
| 材料 MATERIAL | 注記参照 |
| 仕上げ FINISH | —H— |
| 適用電線範囲 WIRE RANGE | —H— |
| 被覆外径 INS. RANGE | —H— |
| DRAWN BY 09/5/12 S.MOCHIZUKI | CHK'D BY 09/04/10 H.H. |
| APP'D BY 09/04/10 M.ENOMOTO | 尺度 SCALE 4 - 1 |

molex MOLEX-JAPAN CO.,LTD.
 日本モレックス株式会社

EDP. NO. 09-65-2**8

ENG. NO. SD-5273-NA

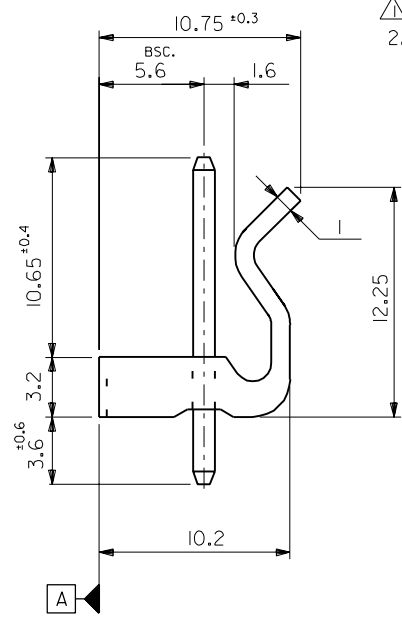
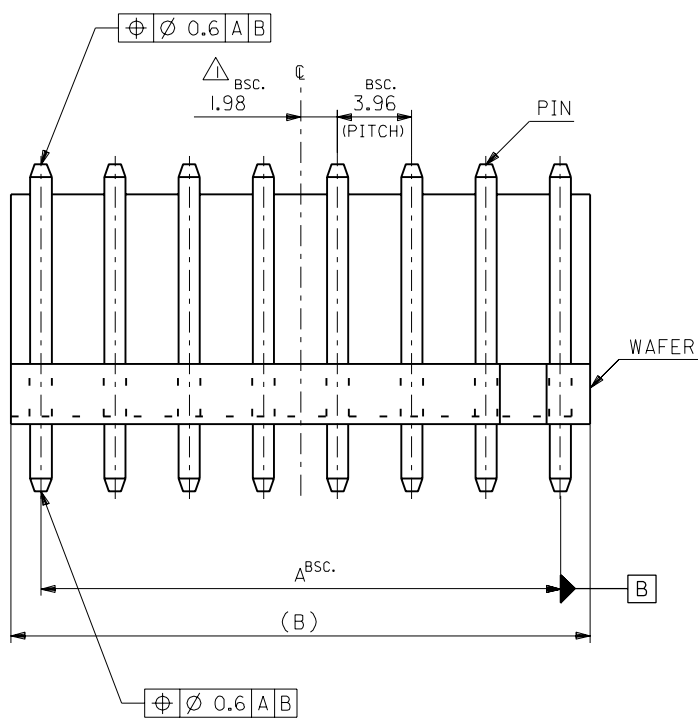
TITLE 名称
 KK 3.96 WAFER ASS'Y WITH LOCK

REV C

THIS DRAWING CONTAINS INFORMATION THAT IS PROPRIETARY TO MOLEX(JAPAN) AND SHOULD NOT BE USED WITHOUT WRITTEN PERMISSION
 本図面は日本モレックス（株）の所有する情報を含むもので 当社の許可なく複製を禁止する。

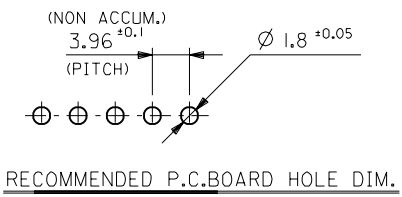
ENG. NO. SD-5273-NA
EDP NO. 09-65-2**8

MM DIMENSIONS IN METRIC DO NOT SCALE DRAWING



NOTES

△ TO BE APPLIED ONLY WHEN ALL CKTS ARE EVEN.
2. MATERIAL
WAFER : 66NYLON, UL94V-2
PIN : BRASS, TIN OVER COPPER PLATING
(\square 1.14X17.45)



| | | | | |
|-------|-------|------------|----------|-------------|
| 46.76 | 43.56 | 09-65-2128 | 5273-12A | 12 |
| 42.8 | 39.6 | ▲ -2118 | ▲ -11A | 11 |
| 38.84 | 35.64 | -2108 | -10A | 10 |
| 34.88 | 31.68 | -2098 | -09A | 9 |
| 30.92 | 27.72 | -2088 | -08A | 8 |
| 26.96 | 23.76 | -2078 | -07A | 7 |
| 23 | 19.8 | -2068 | -06A | 6 |
| 19.04 | 15.84 | -2058 | -05A | 5 |
| 15.08 | 11.88 | -2048 | -04A | 4 |
| 11.12 | 7.92 | ▼ -2038 | ▼ -03A | 3 |
| 7.16 | 3.96 | 09-65-2028 | 5273-02A | 2 |
| B | A | EDP NO. | ENG. NO. | NO.OF CKTS. |

| | | | | | |
|-----------------------------|-------|----------------------------|--|--|--|
| 材料 MATERIAL | | SEE DRAWING | | MOLEX MOLEX-JAPAN CO.,LTD. 日本モレックス株式会社 | |
| 仕上げ FINISH | | — — | | EDP. NO. 09-65-2**8 | |
| 適用電線範囲 WIRE RANGE | | — — | | ENG. NO. SD-5273-NA | |
| 被覆外径 INS. RANGE | | — — | | REV C | |
| DRAWN BY 9/5/10 S.MOCHIZUKI | | CHK'D BY 9/10/10 H.H | | TITLE 名称 KK 3.96 WAFER ASS'Y WITH LOCK | |
| APP'D BY 9/10/10 M.ENOMOTO | | 尺度 SCALE 4 - 1 | | | |
| 角度 ANGLE | +3° | | | | |
| 30 以上 OVER | +0.3 | | | | |
| 10 以下 UNDER | +0.25 | | | | |
| 10 未満 UNDER | +0.2 | | | | |
| 一般公差 GENERAL TOLERANCES | | | | | |
| 記号 LTR | | 変更内容 REVISION RECORD | | DR. CHK. DATE | |
| C | | REVISED & REDRAWN (J90379) | | S.M. H.H. 9/5/10 | |
| REVISION RECORD | | | | | |
| REVISE ONLY ON CAD SYSTEM | | | | | |

THIS DRAWING CONTAINS INFORMATION THAT IS PROPRIETARY TO MOLEX(JAPAN) AND SHOULD NOT BE USED WITHOUT WRITTEN PERMISSION
本図面は日本モレックス(株)の所有する情報を含むもので 当社の許可なく複製を禁止する。

MXJ-8

ZFOE100,035J5273.S2.H1