

13 12 11 10 9 8 7 6 5 4 3 2 1

J J

I I

H H

G G

F F

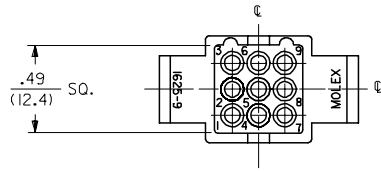
E E

D D

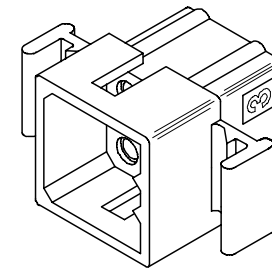
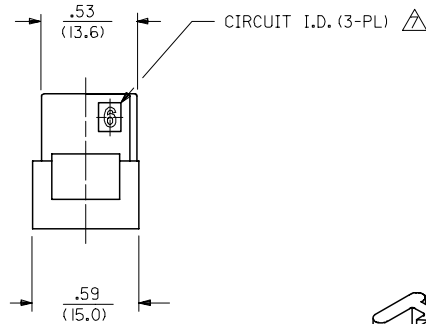
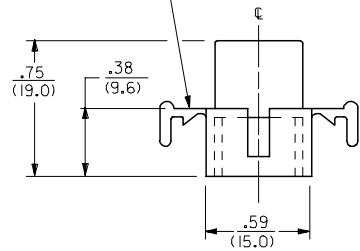
C C

B B

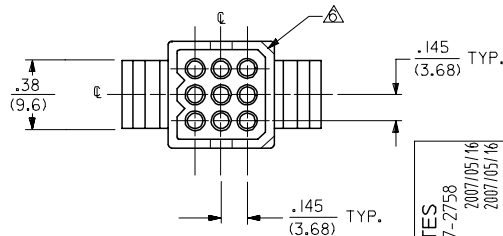
A A



MOUNTING EAR
(WHEN SPECIFIED)
SEE DETAIL 3 OR 4
(2 PL.)



PLUG



3	R
2	R
1	R
SHT. REV.	

UPDATE NOTES EC NO: UCP2007-2758 2007/05/16 DRAWN/PRD/DR 2007/05/16 CHKD:LS/HMT 2007/05/16 APPR:FSM/TH 2007/05/16 REV DESCRIPTION	QUALITY SYMBOLS ▽=0 ▽=0	GENERAL TOLERANCES (UNLESS SPECIFIED) <table border="1"> <thead> <tr> <th></th> <th>mm</th> <th>INCH</th> </tr> </thead> <tbody> <tr> <td>4 PLACES</td> <td>± .10</td> <td>± .004</td> </tr> <tr> <td>3 PLACES</td> <td>± .15</td> <td>± .006</td> </tr> <tr> <td>2 PLACES</td> <td>± .25</td> <td>± .010</td> </tr> <tr> <td>1 PLACE</td> <td>± .36</td> <td>± .014</td> </tr> </tbody> </table> ANGULAR ±1/2°		mm	INCH	4 PLACES	± .10	± .004	3 PLACES	± .15	± .006	2 PLACES	± .25	± .010	1 PLACE	± .36	± .014	DIMENSION STYLE IN/MM DRAWN BY DATE JJS 1988/02/05 CHECKED BY DATE RW 1988/02/05 APPROVED BY DATE RAS 1988/02/05 MATERIAL NO. DOCUMENT NO.	SCALE 2:1 DESIGN UNITS INCH THIRD ANGLE PROJECTION	TITLE .062/(1.57) HOUSINGS PLUG & RECEPTACLE 9 CKT., .145/(3.68) CTRS MOLEX INCORPORATED	SHEET NO. 1 OF 3
		mm	INCH																		
	4 PLACES	± .10	± .004																		
	3 PLACES	± .15	± .006																		
2 PLACES	± .25	± .010																			
1 PLACE	± .36	± .014																			
DRAFT WHERE APPLICABLE MUST REMAIN WITHIN DIMENSIONS		SEE CHART	SD-1625-9*																		
THIS DRAWING CONTAINS INFORMATION THAT IS PROPRIETARY TO MOLEX INCORPORATED AND SHOULD NOT BE USED WITHOUT WRITTEN PERMISSION																					
SIZE C																					

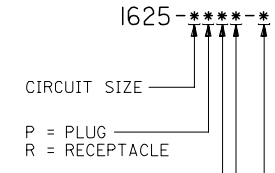
12 11 10 9 8 7 6 5 4 3 2 1

13 12 11 10 9 8 7 6 5 4 3 2 1

PLUG	
PART NO.	ENG. NO.
03-06-2091	I625-9P
03-06-2092	I625-9P1
23-06-2091	I625-9P-C
23-06-2092	I625-9P1-C
04-06-6091	I625-9P1-B
03-06-7091	I625-9PBK
03-06-7092	I625-9P1BK
	OBSOLETE

RECEPTACLE	
PART NO.	ENG. NO.
03-06-1091	I625-9R
03-06-1092	I625-9R1
23-06-1091	I625-9R-C
23-06-1092	I625-9R1-C
03-06-6091	I625-9RBK
03-06-6092	I625-9R1BK
50-36-1871	I625-9R4
50-36-1872	I625-9R4-C

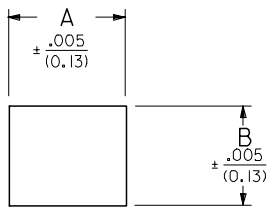
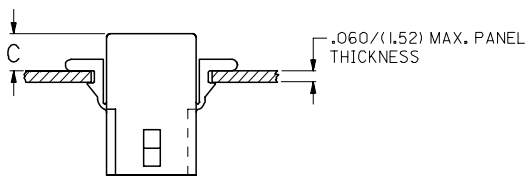
LEGEND:



MOUNTING EAR & DETENT COMBINATIONS:
 BLANK=PLUG OR RECEPTACLE WITH STANDARD EARS
 I=PLUG OR RECEPTACLE WITHOUT EARS
 4=PLUG OR RECEPTACLE WITH PREBENT EARS

BLANK = NATURAL COLOR
 AM = AMBER BK = BLACK BU = BLUE
 BN = BROWN GY = GRAY GN = GREEN
 OR = ORANGE RD = RED YW = YELLOW

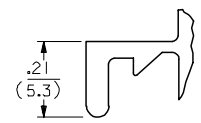
MATERIAL: A = MATERIAL CODE A
 B = MATERIAL CODE B
 C = MATERIAL CODE C



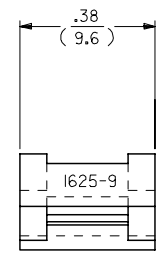
RECEP.	.650 (16.51)	.552 (14.02)	.21 (5.3)	.22 (5.6)
PLUG	.752 (19.10)	.615 (15.62)	.20 (5.1)	.21 (5.3)
PART	DIM. A	DIM. B	DIM. C (STANDARD EAR)	DIM. C (PREBENT EAR)

RECOMMENDED HOLE PATTERN

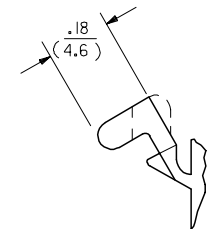
- NOTES:**
- MATERIAL CODES:
 A-NYLON TYPE 6/6, 94V-2
 B-NYLON TYPE 6/6, 94V-0
 C-POLYPROPYLENE, 94V-0
 - FINISH: NONE
 - PRODUCT SPECIFICATION: PS-02-06
 - PACKAGING SPECIFICATION: PK-1625-001
 - HOUSINGS OF USE WITH MOLEX .062 DIAMETER TERMINALS.
- △ SOME PARTS MAY HAVE THIS CORNER CHAMFERED.
- △ CIRCUIT I.D. NUMBERS APPEAR ONLY ON TOOLS BUILT AFTER 1992/11/01.
- PARTS CONFORM TO CLASS B REQUIREMENTS OF COSMETIC SPECIFICATION PS-45499-002.



DETAIL 3
 STANDARD MOUNTING EAR
 (SCALE 4:1)



DETAIL 4
 PREBENT MOUNTING EAR
 (SCALE 4:1)



ADD 50-36-1871/1872 EC NO: UCP2007-2758 DRAWN/PRD/DR 2007/05/16 CHKD:LS/HMT 2007/05/16 APPR:FSM/TH 2007/05/16 REVISIONS DESCRIPTION	QUALITY SYMBOLS	GENERAL TOLERANCES (UNLESS SPECIFIED)	DIMENSION STYLE IN/MM	SCALE 2:1	DESIGN UNITS INCH	THIRD ANGLE PROJECTION
	▽=0 ▽=0	mm INCH 4 PLACES ± --- ± --- 3 PLACES ± --- ±.010 2 PLACES ± 0.25 ±.014 1 PLACE ± 0.36 ± --- ANGULAR ± 1 °	DRAWN BY DATE JJS 1988/02/12 CHECKED BY DATE RW 1988/02/12 APPROVED BY DATE RAS 1988/02/12	TITLE	.062/(1.57) HOUSINGS, PLUG AND RECEPTACLE, 9 CKT., .145/(3.68) CTRS MOLEX INCORPORATED	SHEET NO. 3 OF 3
	DRAFT WHERE APPLICABLE MUST REMAIN WITHIN DIMENSIONS	SEE CHART	MATERIAL NO.	DOCUMENT NO.		