

# Model PL09564

## PLUG-IN POWER MONITOR

### Operation Manual

Congratulations on your purchase, and welcome to PL09564 Plug-in power monitor. This operation manual will guide you step by step for the various functions of the Power Monitor.

#### Warning:

- To prevent fire or shock hazard, do not expose the unit to rain or moisture.
- The operating voltage is limited to AC 180 ~250V 50/60 Hz, Don't use it in other voltage ratings.
- Indoor use only.
- The maximum output current is 15A. The buzzer whistles and the reading on the LCD display flashes when over current.
- To avoid electrical shock, do not open the cabinet. Refer servicing to qualified personnel only.



#### 1. Installation: (refer to figure 3)

PL09564 include 7 precision digital Meter. Plug the PL09564 to wall outlet, then connects the appliance or equipment to its receptacle, the LCD display will be lit after power up.

- The LCD shows all meter readings which includes Volt, Current, Watt, Frequency, Power Factor, and VA, it starts to accumulate KWH and its duration time (hour) after power ON.

- Press **Volt** Key for true RMS Voltage display.

- Press **Amp** Key for true RMS output current display.

- Press **Watt** display Watt meter, then press key to display VA meter, and active power for 1 second each automatically.

**Watt/VA** Key is a toggle function Key, the LCD will show Watt is the active power, and VA is the apparent Power. (VA = Vrms Arms)

- HZ/PF** is a toggle function key, the LCD will show the sequence of HZ → PF → HZ → HZ is the Frequency of output Voltage, where PF is the Power Factor (ie PF=W/Vrms Arms).

- Press **KWH** shows the energy consumption, then press key to display the time (hour) and active power for 1 second each automatically.

**KWH/Hour** is a toggle function key, the LCD will show the sequence of KWH → Hour → KWH. Kilo-Watt-Hour (from 0.01 KWH to 999 KWH) is electronic energy. Hour is the duration time after Power On (ie from 1 minute ~ 9999 Hour).

#### 8. MAINTENANCE

Protect the meter from adverse weather conditions. The meter is not waterproof. Do not expose the LCD display to direct sunlight for long periods of time.

**CAUTION:** To avoid damage to the meter, do not expose it to sprays, liquids, or solvents.

Clean the exterior of the meter by removing dust with a lint-free cloth.

Use care to avoid scratching the clear plastic display filter.

For further cleaning, use a soft cloth or paper towel dampened with water. You can use a 75% isopropyl alcohol solution for more efficient cleaning.

**CAUTION:** To avoid damage to the surface of the meter, do not use abrasive or chemical cleaning agents.

#### Model PL09564 Specifications:

ITEM	RANGE	
RMS voltage	180.0~250.0 Vrms	
RMS current	0.00~15.00 Arms	
Active power	0~3750 Watts	
Apparent power	0~3750 VA	
Line Frequency	47.0~63.0 Hz	
Power Factor	0.00~1.00	
Energy Quantity	0.00~9999 KWH	
KWH Hour	00:00~9999	
Items	Accuracy	
	Max.	Typ.
RMS voltage	1%	0.2%
RMS current	1%	0.3%
Active power	2%	0.5%
Apparent power	2%	0.5%
Line Frequency	2%	±0.1Hz
Power Factor	0.03	0.01
Energy Quantity	2%	0.5%
KWH Hour	30 ppm	
Fuse Rating	0.2A/250V 3x11mm	

**Note:** The typical accuracy for voltage is in the range of 190V~250V; and for current is in the range of 0.2A~15A.

#### Environment Condition:

- Altitude up to PL09564
- Operation temperature 5°C ~40°C
- Max. R.H. 80%
- CAT II
- Pollution degree 2

**CAT II:** Measurement category II is for measurements performed on circuits directly connected to the low voltage installation.

#### Dimension :

130.0mm(H) x 60.0mm(W) x 36.7mm(D)

**Weight :** 145 g (one piece.)

**Power consumption :** 20 VAmx

#### Function Configuration Table

METER	Volt
	Amp
	Watt
	Hz
	VA
	PF
	KWH
CLOCK	KWH HOUR

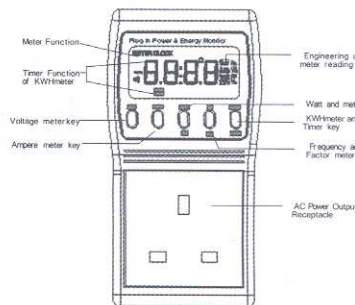


Figure 1 PL09564 Front Panel

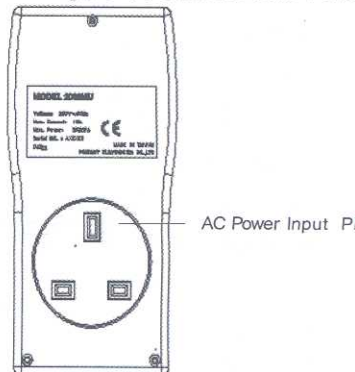


Figure 2 PL09564 Rear Panel

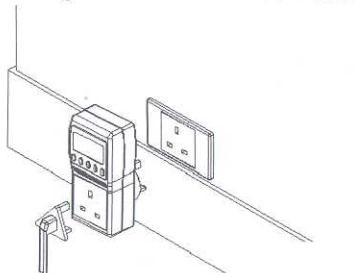


Figure 3 PL09564 Installation Diagram