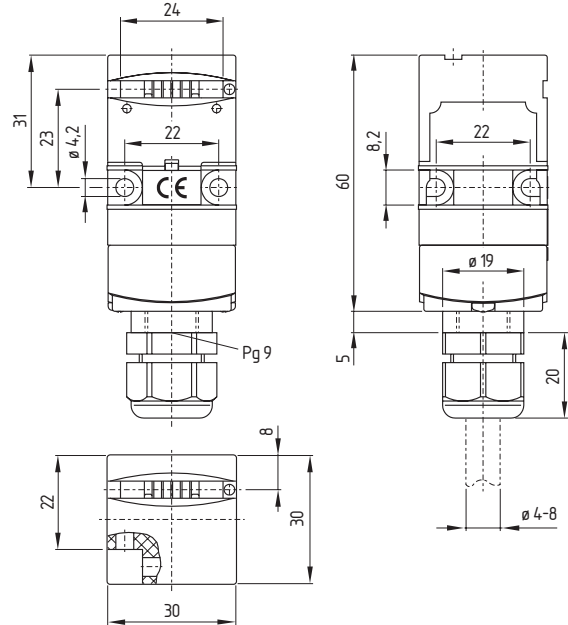


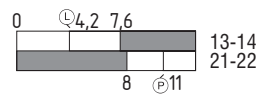
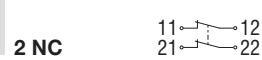
1. Safety switches with separate actuator / Class 2
1.10 AZ 17 range



Features

- Thermoplastic enclosure
- Compact design
- Multiple coding
- Long life
- Double insulated
- Including Pg cable gland
- Slot sealing plug included
- High level of contact reliability with low voltages and currents
- Not sensitive to dirty conditions by virtue of patented roller system
- 8 actuating planes
- Cut clamp termination
- Also available with pre-wired cable

**Contacts/
Switch travel**



Latching force 5 N
 Latching force 30 N

AZ 17-11zk
AZ 17-11zrk



AZ 17-02zk
AZ 17-02zrk

Notes

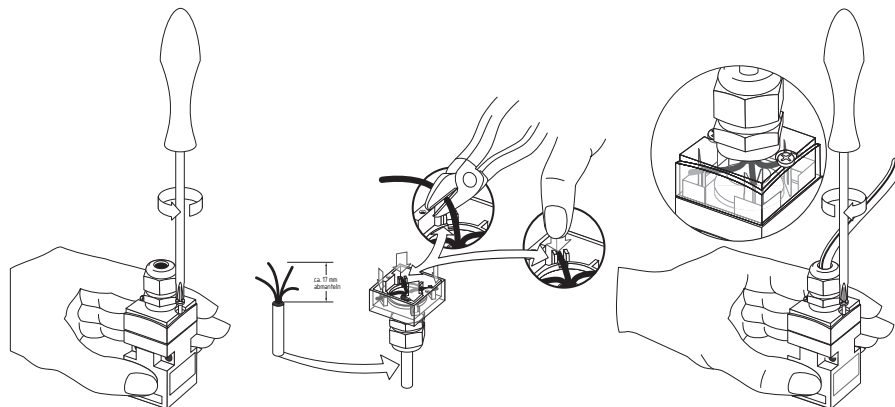
Inserted position of actuator = 0 in switch travel diagrams.
 Actuators must be ordered separately.
 A selection of suitable actuators can be found in 1.12.

1. Safety switches with separate actuator / Class 2

1.10 AZ 17 range



Cut clamp This type of termination (IDC) method enables simple connection of flexible conductors without the need for the use of conductor ferrules.



- AZ 17 with pre-wired cable**
- Front cable entry, ordering suffix -2243
 - Rear cable entry, ordering suffix -2243-1

Cable lengths

5 metres long	Ordering suffix	-5m
6 metres long	Ordering suffix	-6m
Other lengths of cable on enquiry		

Ordering details

To order, select the part number of the desired switch from the table "Contacts/Switch travel", e.g. safety switch AZ 17 with two NC contacts, with 5 N latching force: AZ 17-02zk

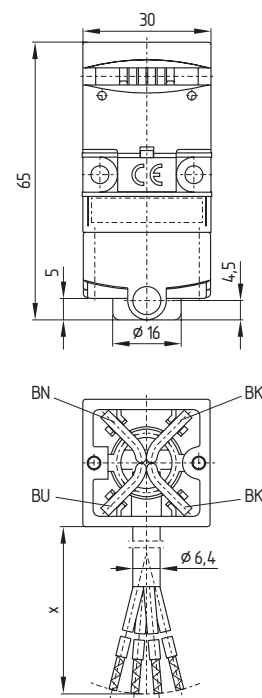
Angled actuator: AZ 17/170-B5

The applicable ordering suffix is added at the end of the part number of the safety switch. Further variants not shown here are available on enquiry.

Info

- With gold-plated contacts (0.3 µm), ordering suffix -1637

Approvals



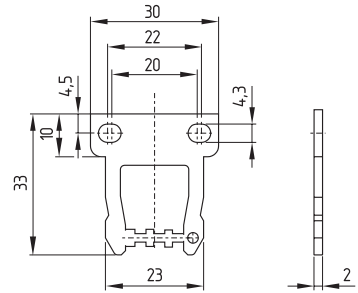
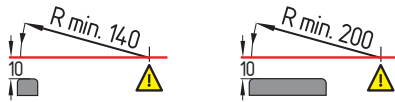
1. Safety switches with separate actuator / Class 2

1.12 Actuators



Straight actuator AZ 17/170-B1

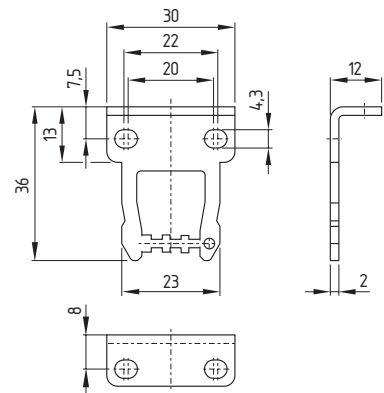
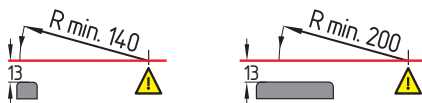
- Particularly suitable for sliding doors
- On hinged guards, minimum actuating radius at 90° to the plane of the actuator 140 mm, minimum actuating radius in line with the plane of the actuator 200 mm



- The axis of the hinge should be 10 mm above the top edge of the safety switch and in the same plane

Angled actuator AZ 17/170-B5

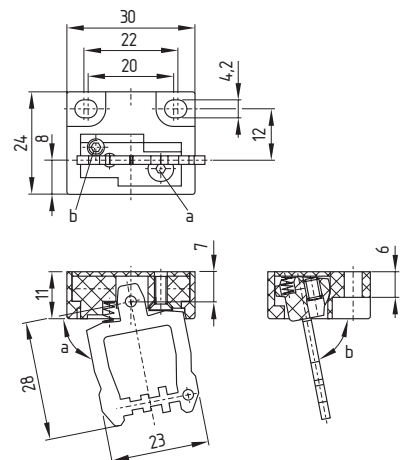
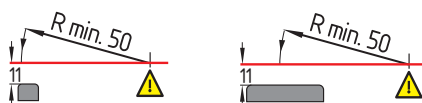
- Particularly suitable for hinged guards (front mounting)
- On hinged guards, minimum actuating radius at 90° to the plane of the actuator 140 mm, minimum actuating radius in line with the plane of the actuator 200 mm



- The axis of the hinge should be 13 mm above the top edge of the safety switch and in the same plane

Adjustable actuator AZ 17-B6

- For very small actuating radii
- Actuating radius adjustable, minimum 50 mm, using an hexagonal key wrench 2 mm A/F (a and b)
- The actuator insert can be turned through 180° to allow adjustment in the opposite direction.

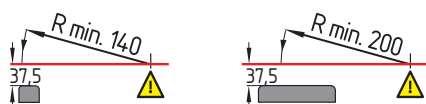


- The axis of the hinge should be 11 mm above the top edge of the safety switch and in the same plane

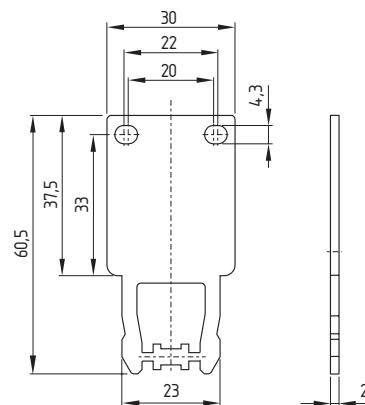


Long straight actuator AZ 17/170-B11

- Particularly suitable for sliding doors
- On hinged guards, minimum actuating radius at 90° to the plane of the actuator 140 mm, minimum actuating radius in line with the plane of the actuator 200 mm

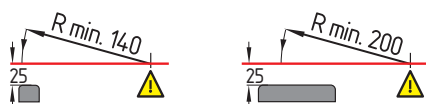


- The axis of the hinge should be 37.5 mm above the top edge of the safety switch and in the same plane

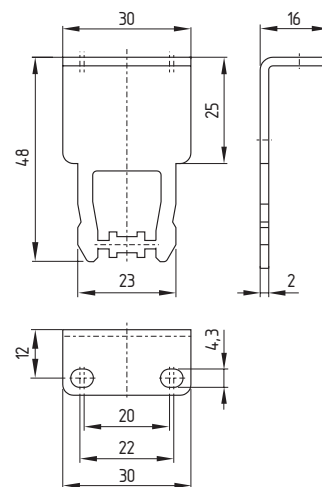


Long angled actuator AZ 17/170-B15

- Particularly suitable for hinged guards (front mounting)
- On hinged guards, minimum actuating radius at 90° to the plane of the actuator 140 mm, minimum actuating radius in line with the plane of the actuator 200 mm



- The axis of the hinge should be 25 mm above the top edge of the safety switch and in the same plane

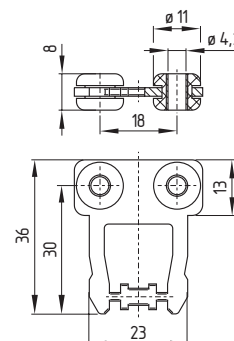


Straight actuator with rubber mountings AZ 17/170-B1-2245

- Particularly suitable for sliding doors
- On hinged guards, minimum actuating radius at 90° to the plane of the actuator 140 mm, minimum actuating radius in line with the plane of the actuator 200 mm
- Damps vibration on guards

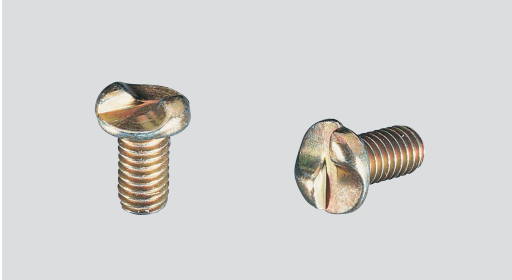


- The axis of the hinge should be 13 mm above the top edge of the safety switch and in the same plane
- Max. 200 Ncm tightening torque for fixing the actuator





Tamperproof screws



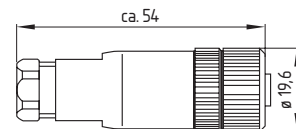
Screw lengths

Pan-head screws
M 4 x 8, Id. No.: 504 239 6001

Supplied in sets of 2 screws

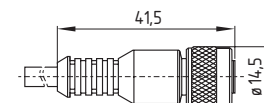
- To mount the actuator
- Higher protection against tampering with interlock
- Protects against unauthorised removal of actuator

Connector plug M 12 x 1 for AZ 17-ST with connector



- Straight connector plug
- Unwired
- A-coding: part number Series 713

Connector plug M 12 x 1 for AZ 17-ST with connector



- Straight connector plug with pre-wired cable
- Cable 5 m long
- Conductors: 4 x 0.75 mm²
- A-coding: part number Series 763

1. Safety switches with separate actuator / Class 2

1.13 Accessories



Mounting set MS AZ 17

- For simple mounting on profile systems
- Mounting of the safety switch parallel or right-angled to the safety guard

Hinweis

- The mounting sets can only be used in conjunction with actuator AZ 17-B6.
- Safety switch and actuator are **not included** in delivery.

Legend

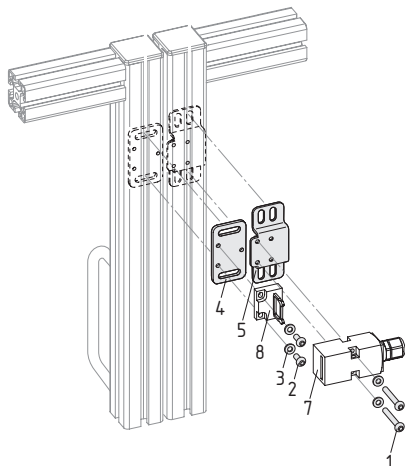
- 1 Roundhead screw M4 x 30 per ISO 7380
- 2 Roundhead screw M4 x 10 per ISO 7380
- 3 Washer per DIN 433-4,3
- 4 Mounting plate AZ 17/AZM 170
- 5 U-profile AZ 17
- 6 Mounting angle AZ 17

Not provided:

- 7 Safety switch AZ 17
- 8 Actuator AZ 17-B6

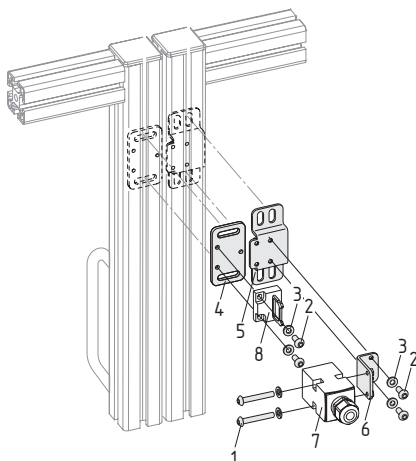
MS AZ 17 P

Mounting parallel to safety guard

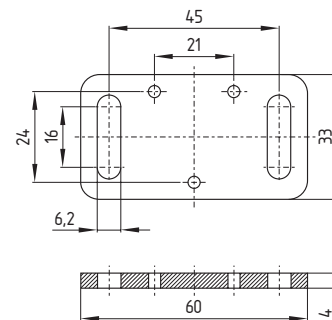


MS AZ 17 R/P

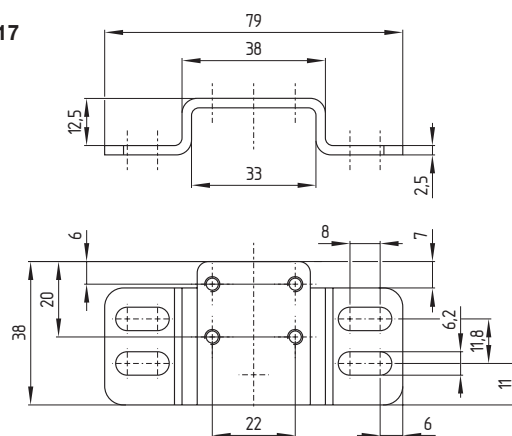
Mounting right-angled to safety guard



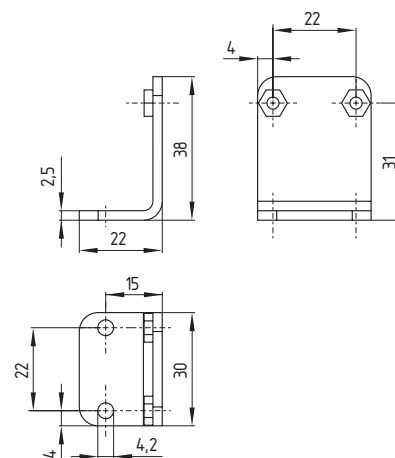
Mounting plate AZ 17/AZM 170



U-profile AZ 17



Mounting angle AZ 17



1. Safety switches with separate actuator / Class 2
1.29 Technical data



	AZ 15 / AZ 16 AZ 16zi	AZ 16-ST AZ 16zi-ST	AZ 17 AZ 17zi
Standards:	IEC/EN 60947-5-1; EN 1088; BG-GS-ET-15		
Enclosure material:	Glass-fibre reinforced thermoplastic, self-extinguishing		
Actuator:	Stainless steel 1.4301		
Protection class:	IP 67 to IEC/EN 60529		
Contact material:	Silver		
Contact type:	Change-over with double break Zb or 2 NC or 3 NC contacts, with galvanically separated contact bridges		Change-over with double break Zb or 2 NC contacts, with galvanically separated contact bridges
Switching system:	⊖ IEC 60947-5-1; ⊕ BG-GS-ET-15; slow action, NC contact with positive break		
Termination:	Screw terminals for max. 2.5 mm ² cables (including conductor ferrules)	Connector M 12 x 1, four pole	Cut clamp (IDC) method 0.75 to 1.0 mm ² , flexible
Rated impulse withstand voltage U _{imp} :	6 kV		4 kV
Rated insulation voltage U _i :	500 V		250 V
Thermal test current I _{th} :	10 A		
Utilisation category:	AC-15; DC-13		AC-15
Rated operating current/voltage I _g /U _g :	4 A/230 VAC; 4 A/24 VDC		4 A/230 V
Max. fuse rating:	6 A gL/gG D-fuse		4 A (slow blow)
Positive break travel:	8 mm		11 mm
Positive break force:	10 N for each NC contact fitted		17 N for each NC contact fitted
Ambient temperature:	- 30 °C ... + 80 °C		
Mechanical life:	> 1 million operations		



1. Safety switches with separate actuator / Class 2
1.29 Technical data



	AZ 17-ST AZ 17zi-ST	AZ 335 AZ 355	AZ 415
Standards:	IEC/EN 60947-5-1/DIN VDE 0660-200; EN 1088; BG-GS-ET-15		
Enclosure material:	Glass-fibre reinforced thermo-plastic, self-extinguishing	Light-alloy diecasting, paint finish	
Actuator:	Stainless steel 1.4301	Zinc-plated brass/aluminium	
Protection class:	IP 67 to IEC/EN 60529/DIN VDE 0470-1		
Contact material:	Silver		
Contact type:	Changeover with double break Zb or 2 NC contacts, with galvanically separated contact bridges		Changeover with double break Zb or 2 NC or 3 NC contacts, galvanically isolated moving contacts
Switching system:	⊖ IEC 60947-5-1; ⊕ BG-GS-ET-15; slow action, NC contact with positive break		
Termination:	Connector M 12 x 1, four pole	Screw terminals; for max. 2.5 mm ² cables (including conductor ferrules)	
Rated impulse			
withstand voltage U _{imp} :	4 kV	2 contacts: 6 kV, 3 contacts: 4 kV	4 kV
Rated insulation			
voltage U _i :	250 V	2 contacts: 500 V, 3 contacts: 250 V	250 V
Thermal test current I _{th} :	10 A		
Utilisation category:	AC-15		
Rated operating			
current/voltage I _g /U _g :	4 A/230 V	4 A/230 V 2.5 A/400 V 1 A/500 V	4 A/230 V
Max. fuse rating:	4 A (slow blow)	6 A (slow blow)	
Positive break travel:	11 mm	10.7 mm	5 mm
Positive break force:	17 N for each NC contact fitted	5 N for each NC contact fitted	Min. 15 N
Ambient temperature:	- 30 °C ... + 80 °C	- 30 °C ... + 90 °C	- 25 °C ... + 80 °C
Mechanical life:	> 1 million operations	10 million operations	> 1 million operations

