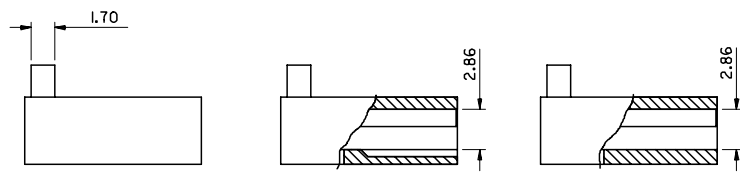
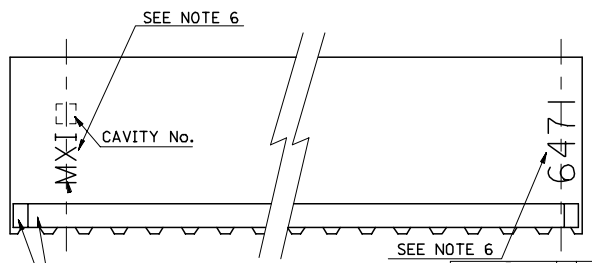
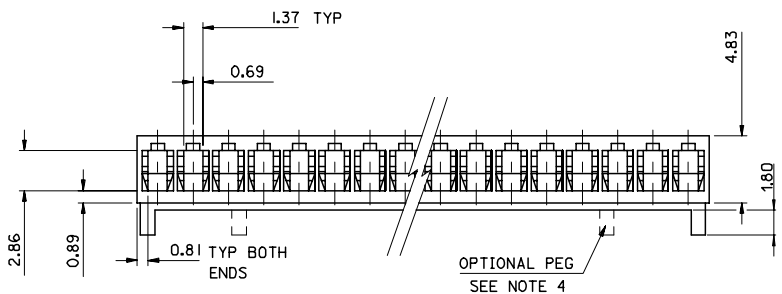
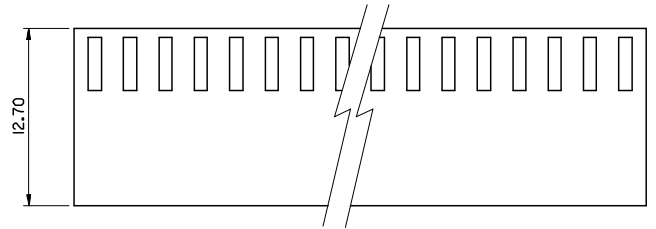
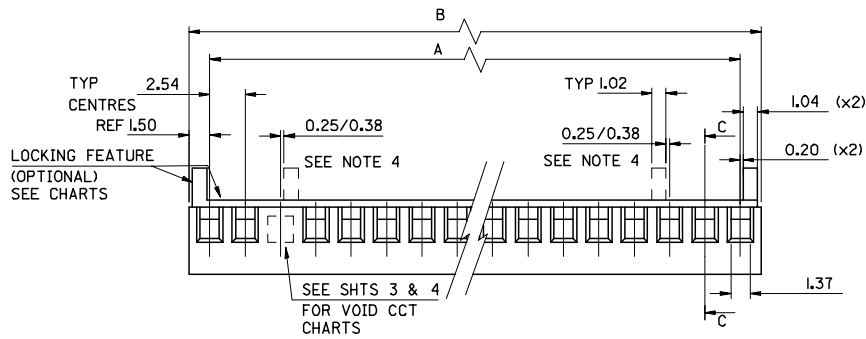
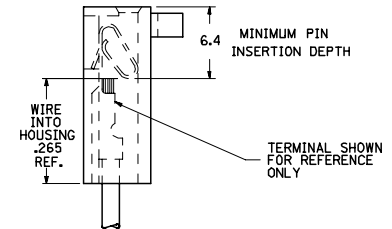


28	68.58±0.25	71.58±0.25
27	66.04±0.25	69.04±0.25
26	63.50±0.25	66.50±0.25
25	60.96±0.25	63.96±0.25
24	58.42±0.25	61.42±0.25
23	55.88±0.25	58.88±0.25
22	53.34±0.25	56.34±0.25
21	50.80±0.25	53.80±0.25
20	48.26±0.25	51.26±0.25
19	45.72±0.20	48.72±0.20
18	43.18±0.18	46.18±0.18
17	40.64±0.15	43.64±0.15
16	38.10±0.15	41.10±0.15
15	35.56±0.13	38.56±0.13
14	33.02±0.13	36.02±0.13
13	30.48±0.13	33.48±0.13
12	27.94±0.13	30.94±0.13
11	25.40±0.10	28.40±0.10
10	22.86±0.10	25.86±0.10
9	20.32±0.08	23.32±0.08
8	17.78±0.08	20.78±0.08
7	15.24±0.08	18.24±0.08
6	12.70±0.05	15.70±0.05
5	10.16±0.05	13.16±0.05
4	7.62±0.05	10.62±0.05
3	5.08±0.05	8.08±0.05
2	2.54±0.05	5.54±0.05
No. OF CCTS	DIM. A	DIM. B



C-C PARTIAL SECTION



- NOTES:
1. MATERIAL: POLYAMIDE (PA66/6), UL94 V-0  
COLOR: NATURAL PER THE FOLLOWING 89992-0086
  2. FOR USE WITH ANTI-FISH HOOKING TERMINAL No. 4809--.
  3. SEE SHT. 3 FOR PARTS WITH VOIDS.
  4. OPTIONAL CENTRE PEGS TO BE USED ON 7cct & LARGER SIZES ONLY. SEE SHT. 3 FOR CHARTED ENG. No.'S.
  5. PART No. PRECEDED BY CODE LETTER DESIGNATES MFG. LOC'N. I=IRELAND

E-6471-N-\*\*\*  
 No. OF CCTS  
 BLANK = STD. VOID  
 B = OPT. STYLE VOID  
 VOID CCT LOC'N.  
 BLANK NO LOCKING RAMP  
 I = LOCKING RAMP & POL. RIB  
 S = OPT. PEG  
 R = LOCKING RAMP ONLY

6. 'MX\*' MARK AND PART I.D. '6471' APPEAR EITHER ON FRONT OR BACK SIDE. SEE END VIEW FOR SIDE SIDE ORIENTATION.

CORRECT DIMENSION EC No: E2007-0665 DRAWN: OBYRNES 2007/02/05 CHKD: 2007/02/05 APPR: OBYRNES 2007/02/12	QUALITY SYMBOLS =0 =0	GENERAL TOLERANCES (UNLESS SPECIFIED)		DIMENSION STYLE MM ONLY		SCALE 4:1	DESIGN UNITS METRIC	THIRD ANGLE PROJECTION	
		4 PLACES ± --- ± ---	3 PLACES ± --- ± ---	2 PLACES ± 0.15 ± ---	1 PLACE ± 0.25 ± ---	ANGULAR ± --- °	DRAWN BY SF	DATE 2000/07/14	CHECKED BY DWASZKIEWICZ
DRAFT WHERE APPLICABLE MUST REMAIN WITHIN DIMENSIONS		SEE CHART		MATERIAL NO. JDENNEY 2006/02/27		MOLEX INCORPORATED			
				DOCUMENT NO. SD-6471-N*-**		SHEET NO. 1 OF 5			



PART NO.  
DWG. NO.  
SD-6471-N

PART No.	ENG No.	No. OF CIRCUITS	RAMP & POL. RIBS	VOID CCT LOCATION	DIM. A	DIM. B
22-01-4022	E-6471-021-02	2	YES	2	↑	↑
↓ -4032	↓ -031-02	3	↓	↓	↓	↓
↓ -4042	↓ -041-02	4				
↓ -4052	↓ -051-02	5				
↓ -4062	↓ -061-02	6				
↓ -4072	↓ -071-02	7				
↓ -4082	↓ -081-02	8				
↓ -4092	↓ -091-02	9				
↓ -4102	↓ -101-02	10				
↓ -4112	↓ -111-02	11				
↓ -4122	↓ -121-02	12				
↓ -4132	↓ -131-02	13				
↓ -4142	↓ -141-02	14				
↓ -4152	↓ -151-02	15				
↓ -4162	↓ -161-02	16				
↓ -4172	↓ -171-02	17				
↓ -4182	↓ -181-02	18				
↓ -4192	↓ -191-02	19				
↓ -4202	↓ -201-02	20				
↓ -4212	↓ -211-02	21				
↓ -4222	↓ -221-02	22				
↓ -4232	↓ -231-02	23				
↓ -4242	↓ -241-02	24				
↓ -4252	↓ -251-02	25				
↓ -4262	↓ -261-02	26				
↓ -4272	↓ -271-02	27				
22-01-4282	E-6471-281-02	28	YES	2	↑	↑

PART No.	ENG No.	No. OF CIRCUITS	LOCKING FEATURE	VOID CCT LOCATION	DIM. A	DIM. B
22-01-4021	E-6471-02-02	2	NO	2	↑	↑
↓ -4031	↓ -03-02	3	↓	↓	↓	↓
↓ -4041	↓ -04-02	4				
↓ -4051	↓ -05-02	5				
↓ -4061	↓ -06-02	6				
↓ -4071	↓ -07-02	7				
↓ -4081	↓ -08-02	8				
↓ -4091	↓ -09-02	9				
↓ -4101	↓ -10-02	10				
↓ -4111	↓ -11-02	11				
↓ -4121	↓ -12-02	12				
↓ -4131	↓ -13-02	13				
↓ -4141	↓ -14-02	14				
↓ -4151	↓ -15-02	15				
↓ -4161	↓ -16-02	16				
↓ -4171	↓ -17-02	17				
↓ -4181	↓ -18-02	18				
↓ -4191	↓ -19-02	19				
↓ -4201	↓ -20-02	20				
↓ -4211	↓ -21-02	21				
↓ -4221	↓ -22-02	22				
↓ -4231	↓ -23-02	23				
↓ -4241	↓ -24-02	24				
↓ -4251	↓ -25-02	25				
↓ -4261	↓ -26-02	26				
↓ -4271	↓ -27-02	27				
22-01-4281	E-6471-28-02	28	NO	2	↑	↑

SEE SHEET I FOR DIMENSION

SEE SHEET I FOR DIMENSION

SEE SHEET I FOR DIMENSION

SEE SHEET I FOR DIMENSION

**REVISE ONLY ON CAD SYSTEM** SH. REV.

CAD FILE NAME: SD-6471-N - 503

THIS DRAWING CONTAINS INFORMATION THAT IS PROPRIETARY TO MOLEX INC. & SHOULD NOT BE USED WITHOUT WRITTEN PERMISSION

TITLE: 2.54 mm KK CrP Trm Hsg II

DATE: 13/07/00

SHEET NO: 30F

PART NO: SEE CHART

DWG NO: SD-6471-N-...

SIZE: B

REVISIONS:

NO.	DESCRIPTION	DATE
1	PLACE #	
2	PLACE #	
3	PLACE #	

DESIGN DIMENSION (MM)  IN. (PRIMARY)

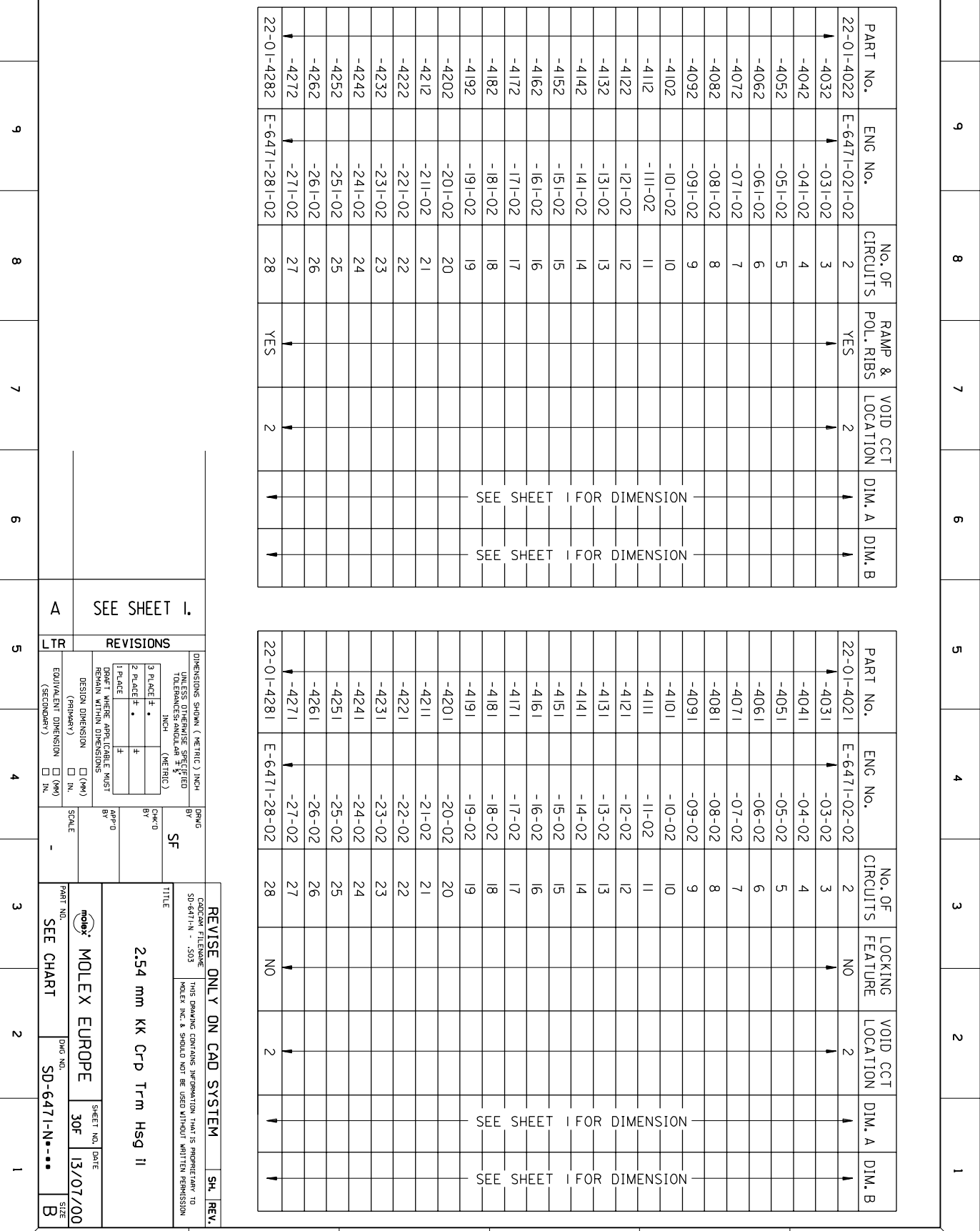
EQUIVALENT DIMENSION (MM)  IN. (SECONDARY)

SCALE: -

APPROVED BY: [Signature]

DATE: [Date]

10 9 8 7 6 5 4 3 2 1



A B C D E F

10 9 8 7 6 5 4 3 2 1

7132-1283

PART NO. SD-6471-N  
DWG. NO. SEE CHART

HOUSING WITH OPTIONAL PEGS

PART No.	ENG No.	No. OF CIRCUITS	RAMP & POL. RIBS	DIM. A	DIM. B
NOT TOOLED	E-6471-7S	7	YES	↑	↑
↑	-8S	8	↑	↑	↑
↑	-9S	9	↑	↑	↑
↑	-10S	10	↑	↑	↑
↑	-11S	11	↑	↑	↑
↑	-12S	12	↑	↑	↑
↑	-13S	13	↑	↑	↑
↑	-14S	14	↑	↑	↑
↑	-15S	15	↑	↑	↑
↑	-16S	16	↑	↑	↑
↑	-17S	17	↑	↑	↑
↑	-18S	18	↑	↑	↑
↑	-19S	19	↑	↑	↑
↑	-20S	20	↑	↑	↑
↑	-21S	21	↑	↑	↑
↑	-22S	22	↑	↑	↑
↑	-23S	23	↑	↑	↑
↑	-24S	24	↑	↑	↑
↑	-25S	25	↑	↑	↑
↑	-26S	26	↑	↑	↑
↑	-27S	27	↑	↑	↑
NOT TOOLED	E-6471-28S	28	YES	↑	↑

PART No.	ENG No.	No. OF CIRCUITS	RAMP & POL. RIBS	VOID CCT LOCATION	DIM. A	DIM. B
22-01-4123	E-6471-12-11	12	NO	11	↑	↑
22-01-4124	↑	12	YES	11	↑	↑
NOT TOOLED	-121-11	12	NO	11	↑	↑
NOT TOOLED	-24-01	24	NO	1	↑	↑
NOT TOOLED	-241-01	24	YES	1	↑	↑
22-01-6132	-13-51	13	NO	2 & 5	↑	↑
NOT TOOLED	-131-51	13	YES	2 & 5	↑	↑
22-01-6134	-13-52	13	NO	9 & 12	↑	↑
22-01-6135	-131-52	13	YES	9 & 12	↑	↑
NOT TOOLED	-7-3	7	NO	3	↑	↑
97-00-0739	-71-3	7	YES	3	↑	↑
97-00-0061	-15-51	15	NO	2 & 8	↑	↑
NOT TOOLED	-151-51	15	YES	2 & 8	↑	↑
97-00-0189	-5-4	5	NO	4	↑	↑
97-00-0620	-51-4	5	YES	4	↑	↑
97-00-0619	↑	5	YES	3	↑	↑
97-00-0740	E-6471-61-3	6	YES	3	↑	↑

SEE SHEET I FOR DIMENSION

SEE SHEET I FOR DIMENSION

**REVISE ONLY ON CAD SYSTEM** SH. REV.

CAD FILE NAME: SD-6471-N - .S04 THIS DRAWING CONTAINS INFORMATION THAT IS PROPRIETARY TO MOLEX INC. & SHOULD NOT BE USED WITHOUT WRITTEN PERMISSION

TITLE: 2.54 mm KK CrP Trm Hsg II

MOLEX MOLEX EUROPE SHEET NO. DATE: 40F 17/07/00

PART NO. SEE CHART DWG. NO. SD-6471-N-... SIZE: B

SCALE: -

DESIGN DIMENSION (PRIMARY) [ ] IN. [ ] MM

EQUIVALENT DIMENSION (SECONDARY) [ ] IN. [ ] MM

WHICH APPLICABLE MUST REMAIN WITHIN DIMENSIONS

3 PLACE # . #

2 PLACE # . #

1 PLACE # #

APPRO. BY: SF

DWG. NO. BY: SF

DIMENSIONS SHOWN (METRIC) INCH

UNLESS OTHERWISE SPECIFIED TOLERANCES SHALL BE:

INCH (METRIC)

REVISIONS

LTR SEE SHEET I.

10 9 8 7 6 5 4 3 2 1

10 9 8 7 6 5 4 3 2 1

7132-1283

10 9 8 7 6 5 4 3 2 1

OPTIONAL STYLE VOID (SECTION E-E)

PART No.	ENG No.	No. OF CIRCUITS	VOID CCT LOCATION	RAMP & POL. RIBS	DIM. A	DIM. B
22-01-6021	E-6471-02-02B	2	2	NO	↓	↓
NOT TOOLED	-021-02B	2	↓	YES		
22-01-6071	-071-02B	7		NO		
NOT TOOLED	-071-02B	7		YES		
22-01-6101	-101-02B	10		NO		
NOT TOOLED	-101-02B	10		YES		
22-01-6111	-111-02B	11	↓	NO	↓	↓
NOT TOOLED	E-6471-111-02B	11	2	YES	↓	↓

PART NO.  
DWG. NO.  
SD-6471-N

PART No.	ENG No.	No. OF CIRCUITS	RAMP ONLY	DIM. A	DIM. B
97-00-1062	E-6471-2R	2	YES	↓	↓
↓ -1063	↓ -3R	3	↓		
-1064	-4R	4			
-1065	-5R	5			
-1066	-6R	6			
-1067	-7R	7			
-1068	-8R	8			
-1069	-9R	9			
-1070	-10R	10			
-1071	-11R	11			
-1072	-12R	12			
-1073	-13R	13			
-1074	-14R	14			
-1075	-15R	15			
↓ -1076	↓ -16R	16			
97-00-1077	-17R	17			
NOT TOOLED	-18R	18			
↓	-19R	19			
↓	-20R	20			
↓	-21R	21			
↓	-22R	22			
↓	-23R	23			
↓	-24R	24			
↓	-25R	25			
↓	-26R	26			
↓	-27R	27	↓		
NOT TOOLED	E-6471-28R	28	YES	↓	↓

REVISIONS

3 PLACE #	•		
2 PLACE #	•		
1 PLACE #	•		

DESIGN DIMENSION  (MM)  (IN.)

EQUIVALENT DIMENSION  IN.

SCALE

DATE 17/07/00

SHEET NO. 50F

SIZE B

10 9 8 7 6 5 4 3 2 1

PART NO.  
DWG. NO.  
SD-6471-N

REVISIONS

3 PLACE #	•		
2 PLACE #	•		
1 PLACE #	•		

DESIGN DIMENSION  (MM)  (IN.)

EQUIVALENT DIMENSION  IN.

SCALE

DATE 17/07/00

SHEET NO. 50F

SIZE B

REVISIONS

DATE 17/07/00

SHEET NO. 50F

SIZE B

REVISIONS

DATE 17/07/00

SHEET NO. 50F

SIZE B

REVISIONS

DATE 17/07/00

SHEET NO. 50F

SIZE B

REVISIONS

DATE 17/07/00

SHEET NO. 50F

SIZE B

REVISIONS

DATE 17/07/00

SHEET NO. 50F

SIZE B

REVISIONS

DATE 17/07/00

SHEET NO. 50F

SIZE B

REVISIONS

DATE 17/07/00

SHEET NO. 50F

SIZE B

REVISIONS

DATE 17/07/00

SHEET NO. 50F

SIZE B

REVISIONS

DATE 17/07/00

SHEET NO. 50F

SIZE B

REVISIONS

DATE 17/07/00

SHEET NO. 50F

SIZE B

REVISIONS

DATE 17/07/00

SHEET NO. 50F

SIZE B

REVISIONS

DATE 17/07/00

SHEET NO. 50F

SIZE B

REVISIONS

DATE 17/07/00

SHEET NO. 50F

SIZE B

REVISIONS

DATE 17/07/00

SHEET NO. 50F

SIZE B

REVISIONS

DATE 17/07/00

SHEET NO. 50F

SIZE B

REVISIONS

DATE 17/07/00

SHEET NO. 50F

SIZE B

REVISIONS

DATE 17/07/00

SHEET NO. 50F

SIZE B

REVISIONS

DATE 17/07/00

SHEET NO. 50F

SIZE B

REVISIONS

DATE 17/07/00

SHEET NO. 50F

SIZE B

REVISIONS

DATE 17/07/00

SHEET NO. 50F

SIZE B

REVISIONS

DATE 17/07/00

SHEET NO. 50F

SIZE B

REVISIONS

DATE 17/07/00

SHEET NO. 50F

SIZE B

REVISIONS

DATE 17/07/00

SHEET NO. 50F

SIZE B

REVISIONS

DATE 17/07/00

SHEET NO. 50F

SIZE B

REVISIONS

DATE 17/07/00

SHEET NO. 50F

SIZE B

REVISIONS

DATE 17/07/00

SHEET NO. 50F

SIZE B

REVISIONS

DATE 17/07/00

SHEET NO. 50F

SIZE B

REVISIONS

DATE 17/07/00

SHEET NO. 50F

SIZE B

REVISIONS

DATE 17/07/00

SHEET NO. 50F

SIZE B

REVISIONS

DATE 17/07/00

SHEET NO. 50F

SIZE B

REVISIONS

DATE 17/07/00

SHEET NO. 50F

SIZE B

REVISIONS

DATE 17/07/00

SHEET NO. 50F

SIZE B

REVISIONS

DATE 17/07/00

SHEET NO. 50F

SIZE B

REVISIONS

DATE 17/07/00

SHEET NO. 50F

SIZE B

REVISIONS

DATE 17/07/00

SHEET NO. 50F

SIZE B

REVISIONS

DATE 17/07/00

SHEET NO. 50F

SIZE B

REVISIONS

DATE 17/07/00

SHEET NO. 50F

SIZE B

REVISIONS

DATE 17/07/00

SHEET NO. 50F

SIZE B

REVISIONS

DATE 17/07/00

SHEET NO. 50F

SIZE B

REVISIONS

DATE 17/07/00

SHEET NO. 50F

SIZE B

REVISIONS

DATE 17/07/00

SHEET NO. 50F

SIZE B

REVISIONS

DATE 17/07/00

SHEET NO. 50F

SIZE B

REVISIONS

DATE 17/07/00

SHEET NO. 50F

SIZE B

REVISIONS

DATE 17/07/00

SHEET NO. 50F

SIZE B

REVISIONS

DATE 17/07/00

SHEET NO. 50F

SIZE B

REVISIONS

DATE 17/07/00

SHEET NO. 50F

SIZE B

REVISIONS

DATE 17/07/00

SHEET NO. 50F

SIZE B

REVISIONS

DATE 17/07/00

SHEET NO. 50F

SIZE B

REVISIONS

DATE 17/07/00

SHEET NO. 50F

SIZE B

REVISIONS

DATE 17/07/00

SHEET NO. 50F

SIZE B

