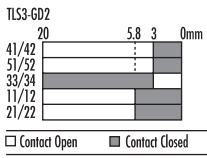
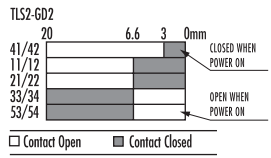
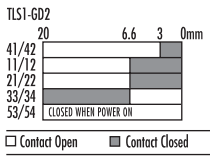
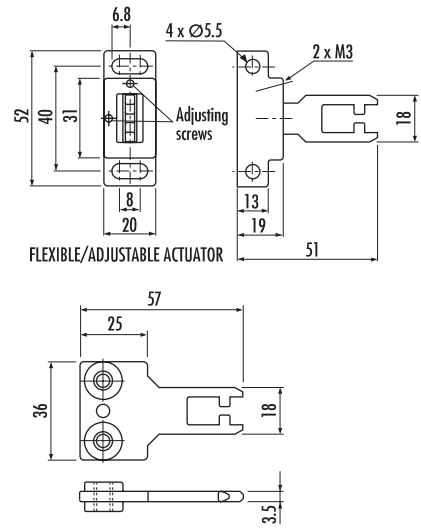
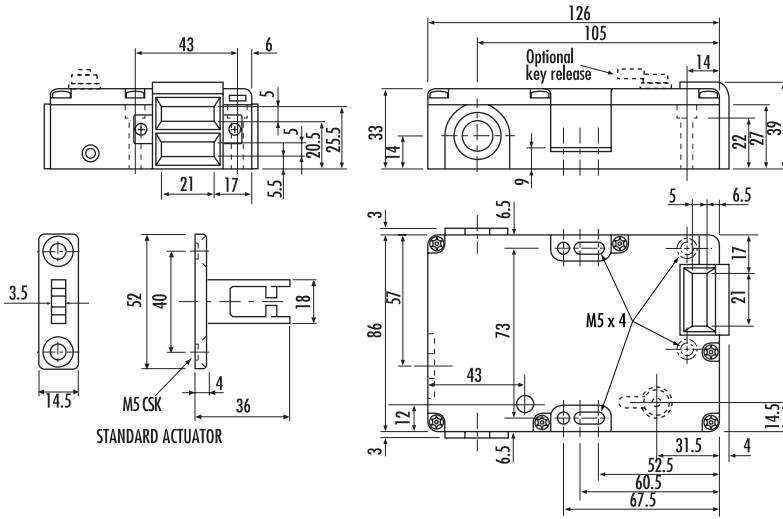
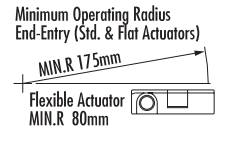
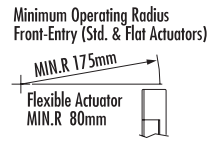


TLS-GD2

dimensions



FLAT ACTUATOR



specifications

Standards	IEC 60947-5-1, EN1088, EN292, EN60204-1
Approvals	CE marked for all applicable directives, cULus & BG
Safety contacts	(TLS 1 & 2) 3 N.C. positive break (TLS 3) 4 N.C. positive break
Utilisation category	AC 15
AC (Ue) (Ie)	500 V 250 V 100 V 1 A 2 A 5 A
DC	250 V 0.5 A, 24 V 2 A
Max. switched current/voltage/load	500 V/500 VA
Thermal current (Ith)	10 A
Minimum current	5 V, 5mA DC
Safety contact gap	> 2mm
Rtd insulation voltage	(Ui) 500 V
Rtd impulse withstand voltage	(Uimp) 2500 V
Auxiliary contacts	(TLS 1 & 2) 2 N.O. (1 solenoid monitoring) (TLS 3) 1 N.O.
Pollution degree	3
Actuator travel for positive opening	7 mm
Break contact minimum force	12N
Maximum actuation speed	160 mm per sec
Maximum actuator frequency	1 cycle per sec
Case material	UL approved glass filled polyester
Actuator material	Stainless steel
Protection	IP67
Conduit entry	3 x M20 or 3 x Pg 13.5
Operating temperature	-20°C to +60°C

Mounting	4 x M5
Fixing	Any position
Locking	TLS1 & 3 power to release TLS2 power to lock
Mechanical life	1 x 10 ⁶ operations
Electrical life	1 x 10 ⁶ operations
Weight	400 g
Colour	Red
Cleaning	May be high pressure steam cleaned
Maximum holding force	2000N
Maximum releasable force	100N
Minimum operating radius	160mm (80mm with flexible actuator)
Power supply	24V AC/DC, 110V AC, 230V AC (solenoid)
Solenoid power	Typically 7W 100% ED

***Note:** The safety contacts of the Guardmaster switches are described as normally closed (N/C), i.e. with the guard closed, actuator in place (where relevant) and the machine able to be started