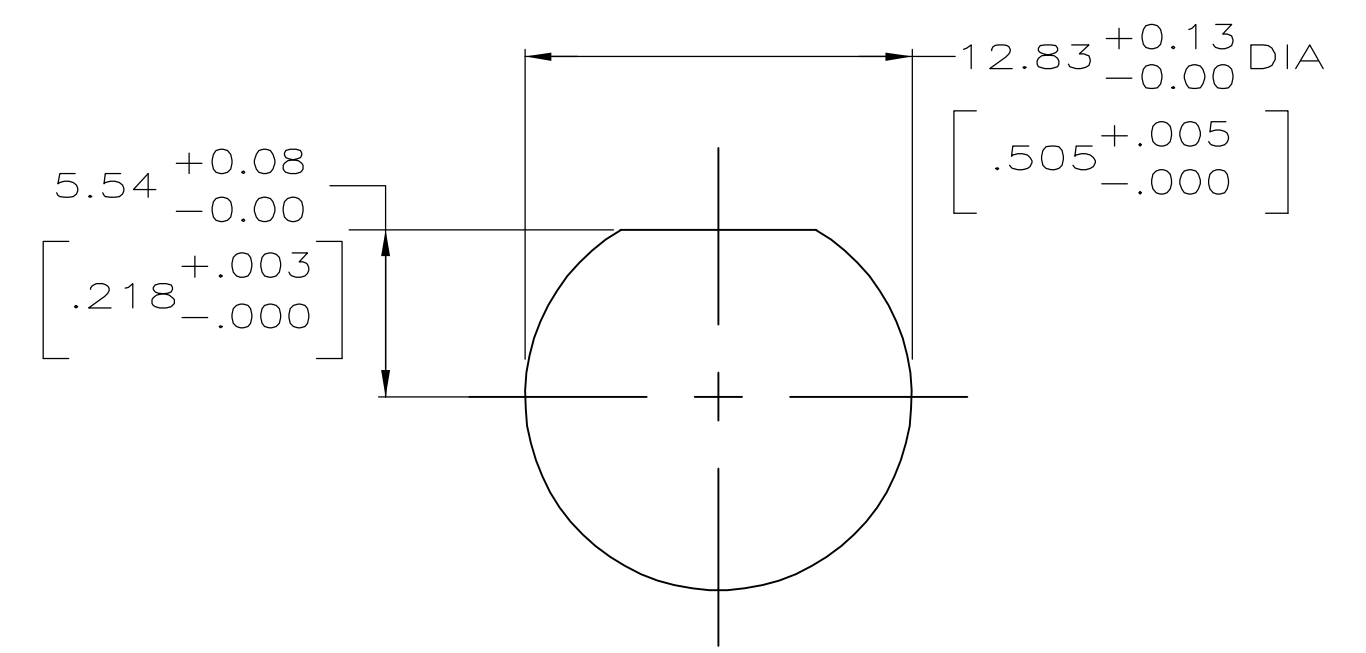
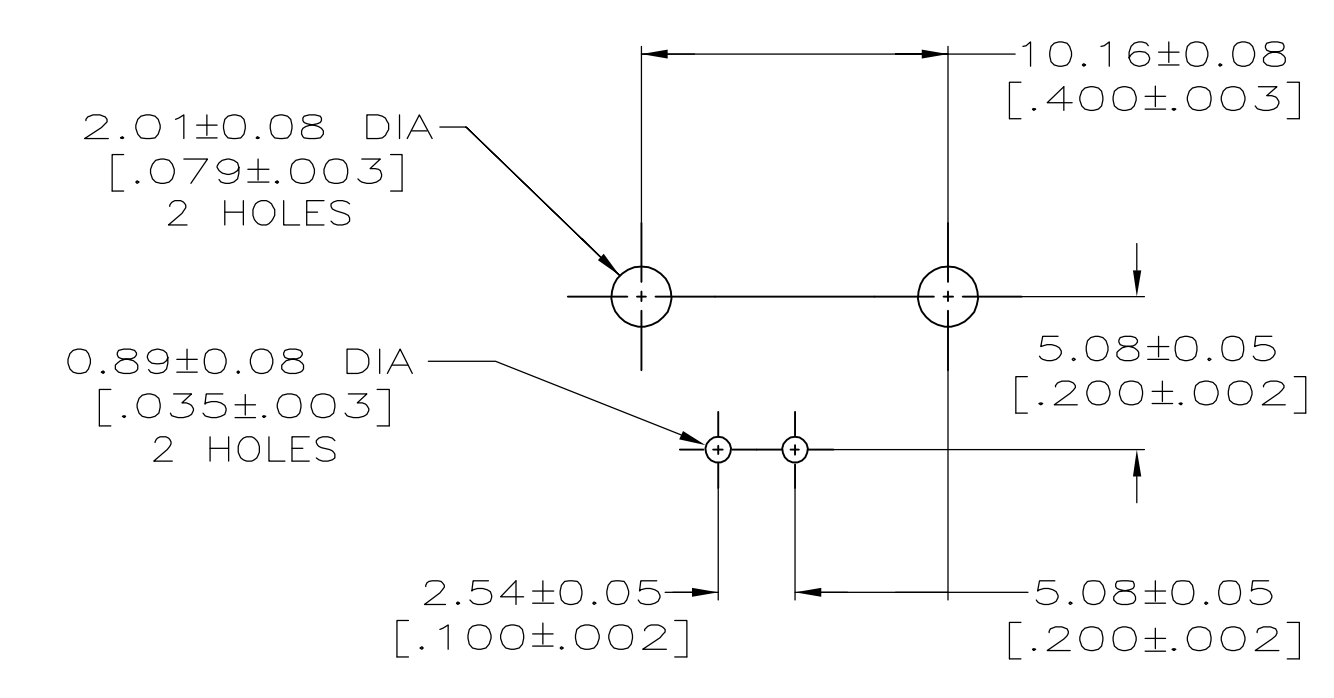


- 1 ZINC PER QQ-Z-363.
- 2 POLYMETHYLPENTENE PER ASTM-D-1238.
- 3 PHOSPHOR BRONZE PER QQ-B-750.
- 4 BRASS PER ASTM-B-453.
- 5 BRASS PER ASTM-B-16.
- 6 NICKEL PLATE PER QQ-N-290, 3.81 μm [.000150] MINIMUM THICK.
- 7 TIN PLATE PER ASTM-B-545, 3.81 μm [.000150] MINIMUM THICK.
- 8 GOLD PLATE PER MIL-G-45204, 1.27 μm [.000050] MINIMUM THICK.
- 9 GOLD PLATE PER MIL-G-45204, 0.76 μm [.000030] MINIMUM THICK.
- 10. SEE INSTRUCTION SHEET 408-2769.



RECOMMENDED PANEL CUTOUT



PCB CONFIGURATION

5413879-2	
5413879-1	
CONTACT FINISH	PART NUMBER

THIS DRAWING IS A CONTROLLED DOCUMENT.		DWN A. FERNANDEZ-DOCKES 22APR2005	 Tyco Electronics Corporation Harrisburg, Pa 17105-3608
DIMENSIONS: mm [INCHES]		CHK J. HAVENER 22APR2005	
TOLERANCES UNLESS OTHERWISE SPECIFIED:		APPD J. LIPPERT 22APR2005	NAME
0 PLC ± -		PRODUCT SPEC	JACK, RIGHT ANGLE, PCB
1 PLC ± -		APPLICATION SPEC	50 OHM, SERIES BNC
2 PLC ± 0.20 [.008]		SIZE	A1
3 PLC ± -		CAGE CODE	00779
4 PLC ± -		DRAWING NO	5413879
ANGLES ± -		RESTRICTED TO	-
FINISH SEE NOTES 6-9		WEIGHT	-
MATERIAL SEE NOTES 1-5		CUSTOMER DRAWING	SCALE 4:1 SHEET 1 OF 1 REV A