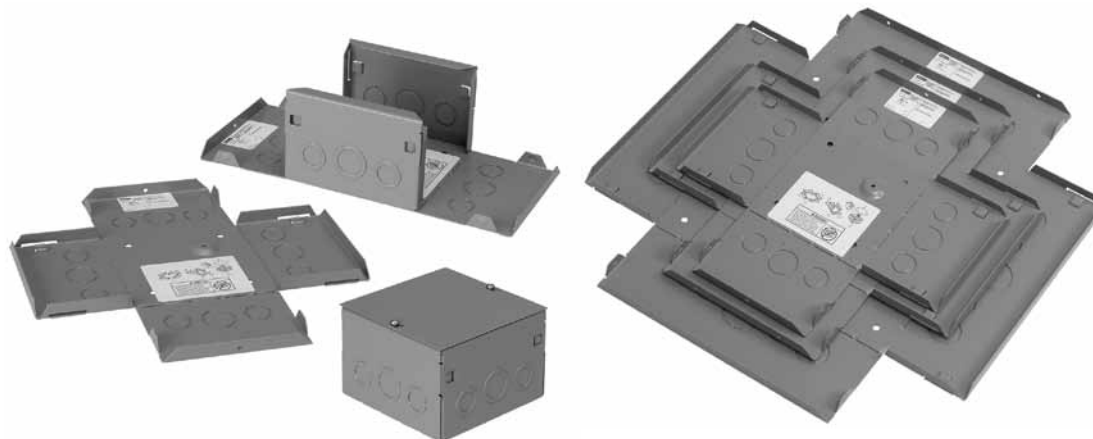


Screw-Cover Type 1 Pull Boxes and Accessories

EZ FORM® Screw Cover, Type 1



Industry Standards

UL 50, 50E Listed; Type 1; File No. E27525
cUL Listed per CSA C22.2 No 40; Type 1; File No. E27525

NEMA/EEMAC Type 1
IEC 60529, IP30

Application

Avoid an unplanned trip when a pull box is required. Unique design provides compact storage of a pull box so it can be available when needed. Use this junction and pull box is in commercial and general industrial applications. Ideal to store in service trucks, maintenance cribs or gang boxes.

Features

- Store flat to save space
- Sides are easily hand formed along fold lines
- Sides interlock and snap in place without tools
- Unique keyhole screw slots in the cover permit removal of cover without extracting screws
- Flat, removable covers fastened with plated steel screws
- Available with or without knockouts
- Provision for grounding
- Mounting holes on back of box
- Each size is shrink wrapped individually with covers and hardware

Specifications

- 16 gauge steel

Finish

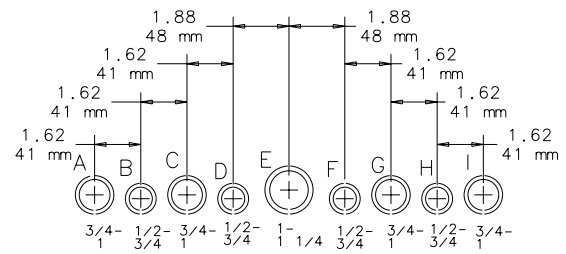
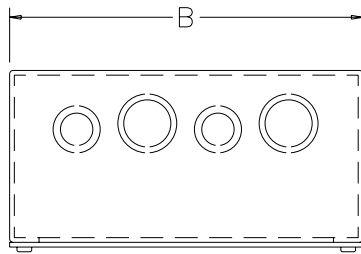
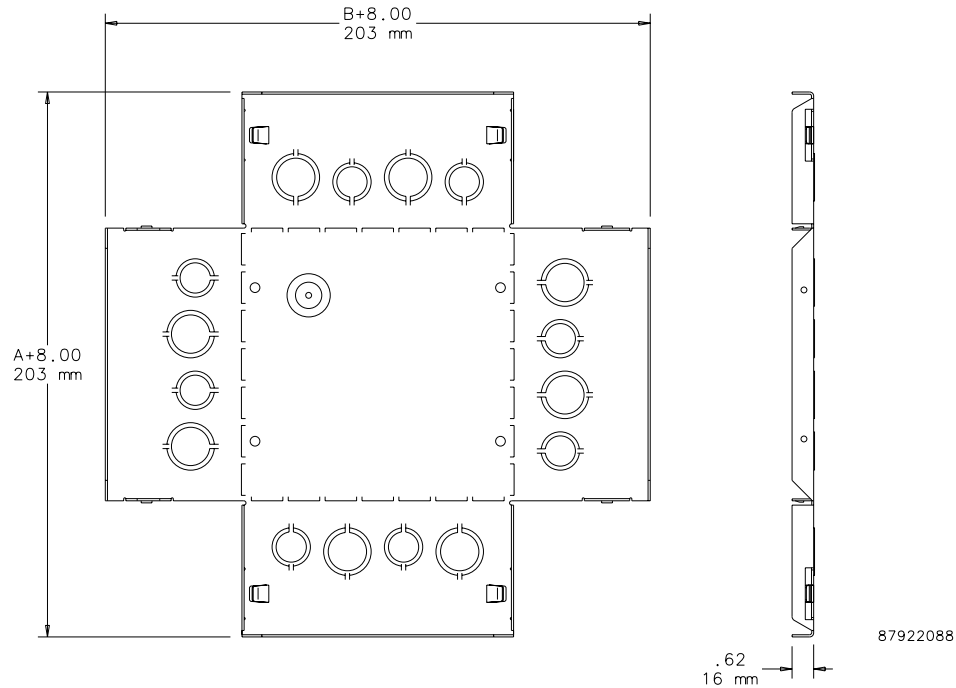
ANSI 61 gray polyester powder paint inside and out over plated steel

Bulletin: A90EZ

Standard Product

Catalog Number	AxBxCin./mm	Knockout Pattern
ASE6X6X4EZ	6.00 x 6.00 x 4.00 152 x 152 x 102	BCD
ASE6X6X4EZNK	6.00 x 6.00 x 4.00 152 x 152 x 102	--
ASE8X8X4EZ	8.00 x 8.00 x 4.00 203 x 203 x 102	FGHI
ASE8X8X4EZNK	8.00 x 8.00 x 4.00 203 x 203 x 102	--
ASE12X12X4EZ	12.00 x 12.00 x 4.00 305 x 305 x 102	CDEFG
ASE12X12X4EZNK	12.00 x 12.00 x 4.00 305 x 305 x 102	--

Screw-Cover Type 1 Pull Boxes and Accessories



CONDUIT SIZES

KNOCKOUT PATTERN
(FROM OUTSIDE OF BOX)

