



5915PC(150x ϕ 172x38^L)

Metal Blades / Standard

EMINEBEA.COM



General Specifications

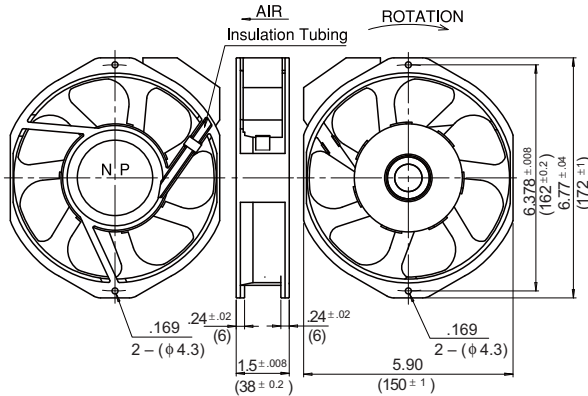
- Motor Protection:** Impedance Protection
- Motor Structure:** Capacitor-Run Induction Motor
- Insulation Resistance:** 100M Ω or over with a DC500V Megger
- Dielectric Withstand Voltage:** AC 1800V 3s
- Allowable Ambient Temperature Range:**
 - 10°C ~ +70°C (Operating)
 - 40°C ~ +70°C (Storage)
 - (non-condensing environment)

Expected Life

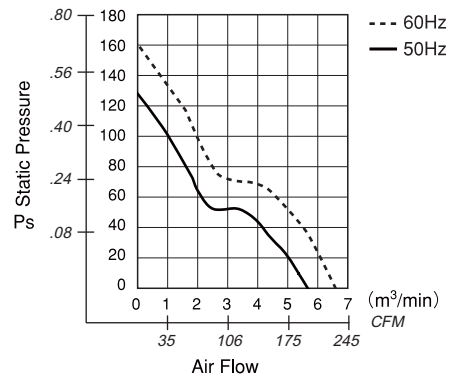
Failure Rate: 10%
25°C 50,000 Hours

Outline

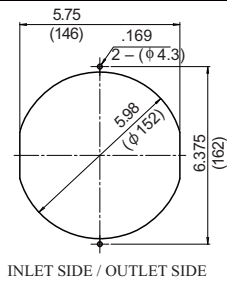
Units: $\frac{\text{inch}}{\text{mm}}$



Characteristic Curves



Panel Cut-outs



Material

- Casing : Aluminum
- Impeller : Steel
- Bearing : Ball Bearings
- Terminal: Faston #110 or Equiv

Specifications

MODEL	Rated Voltage	Frequency	Starting Voltage	Current	Input Power	Speed	Max. Air Flow	Max. Static Pressure	Noise	Mass	
	(V)	(Hz)	(V)	(A) ^{*1}	(W)+10/-20%	(min ⁻¹) ^{*3}	(CFM) ^{*3} (m ³ /min) ^{*3}	(in HzO) ^{*2} (Pa) ^{*2}	(dB) ^{*2}	(g)	
5915PC-10T-B30-S00	100	50	65	0.53	42.0	2650	187.10	5.30	.510	127.5	900
		60		0.45	40.0	3150	222.39	6.30	.655	163.8	
5915PC-12T-B30-S00	115	50	75	0.45	40.0	2650	187.10	5.30	.510	127.5	
		60		0.40	38.0	3150	222.39	6.30	.655	163.8	
5915PC-20T-B30-S00	200	50	130	0.25	42.0	2650	187.10	5.30	.510	127.5	
		60		0.23	40.0	3150	222.39	6.30	.655	163.8	
5915PC-22T-B30-S00	220	50	145	0.25	42.0	2650	187.10	5.30	.510	127.5	
		60		0.23	40.0	3150	222.39	6.30	.655	163.8	
5915PC-23T-B30-S00	230	50	150	0.22	42.0	2650	187.10	5.30	.510	127.5	
		60		0.20	40.0	3150	222.39	6.30	.655	163.8	
5915PC-24T-B30-S00	240	50	155	0.20	39.0	2650	187.10	5.30	.510	127.5	
		60		0.20	39.0	3150	222.39	6.30	.655	163.8	

Rotation: Counterclockwise as seen from the label side.
Airflow Outlet: Label side

*1: Maximum Values in Free Air *2: Average Values in Free Air
*3: Minimum Values in Free Air