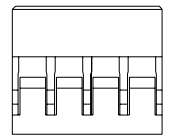
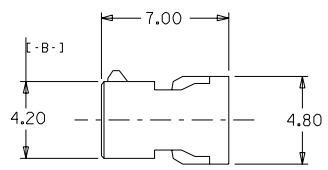
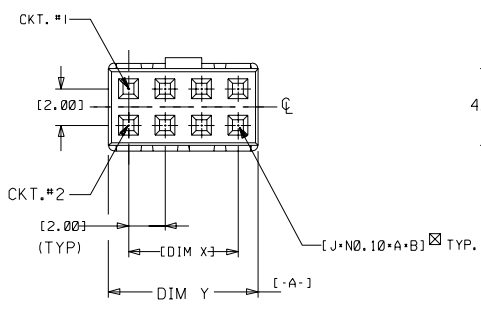
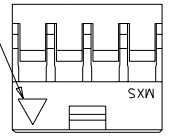


PART NUMBER	CKT SIZE	DIM X	DIM Y
51110-0460	4	2.00	4.20
51110-0660	6	4.00	6.20
51110-0860	8	6.00	8.20
51110-1060	10	8.00	10.20
51110-1260	12	10.00	12.20

IST CIRCUIT IDENTIFICATION



LEGEND :

51110 - ***60
└── CKT SIZE

NOTES :

- FOR ILLUSTRATION PURPOSES, 8 CKT SIZE HSG. IS SHOWN.
- PARTS TO BE USED WITH CRIMP TERMINAL PART NUMBER 50394-8***.
- APPLICABLE WIRE RANGE : AWG #24 - #30.
- WIRE INSULATION RANGE : DIAMETER 1.40MM MAXIMUM.

MM

				MATERIAL :		GLASS-FILLED POLYESTER UL RATED 94V-0 COLOR BLACK		MOLEX SINGAPORE PTE LTD SHEET OF	
				FINISH :				GENERAL TOLERANCES ± 0.20/0.008 REV A	
A	REL PER PDR#95-04-0029	S60074	SEE JACK	950815	DRAWN BY		950815		DWG. NO. SD 51110-***60
I	PROPOSAL ONLY			950522	CHK'D BY				TITLE : 2MM GRID, WIRE-TO-BOARD CONN. CRIMP RECEPTACLE HSG.
LTR	REVISION RECORD	ECN	DR	CHK	DATE	APPR'D BY	SCALE	4 : 1	
REVISE ONLY ON CAD SYSTEM									