

10 9 8 7 6 5 4 3 2 1

NOTES:

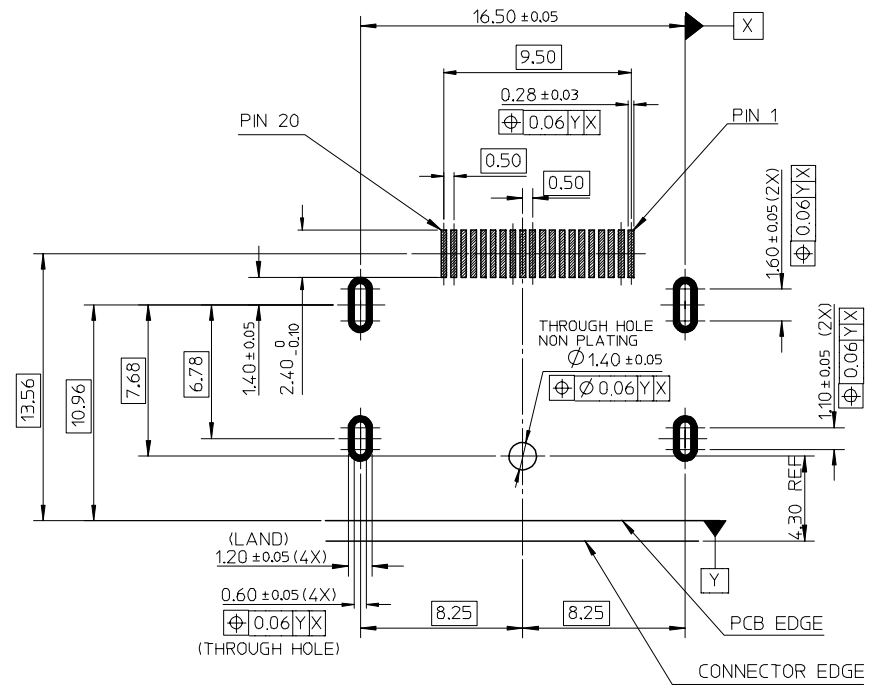
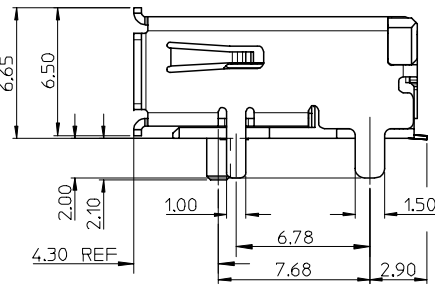
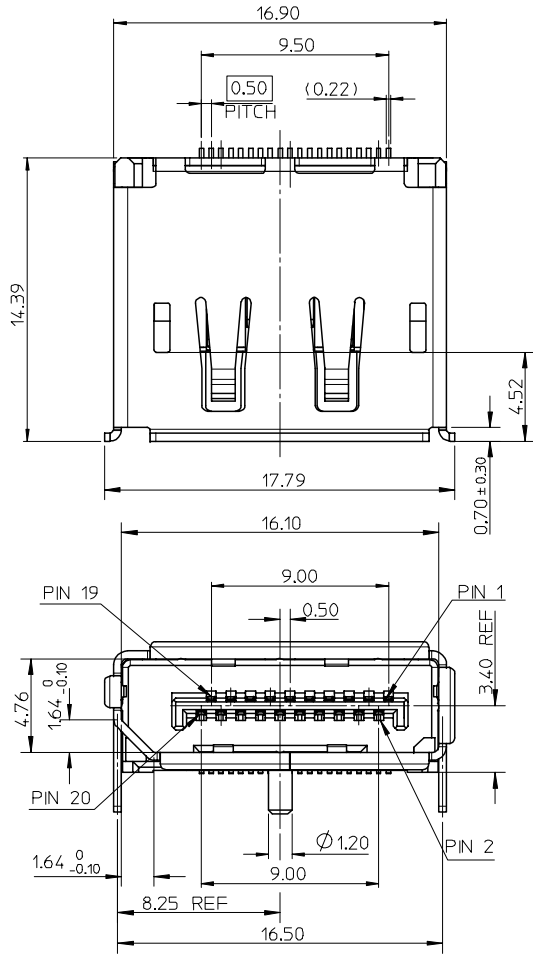
1. MATERIAL:

HOUSING: HIGH TEMPERATURE THERMAL PLASTIC, BLACK, 30% GLASS FILLED, UL94V-0.
 TERMINAL: COPPER ALLOY.
 SHELL: COPPER ALLOY.

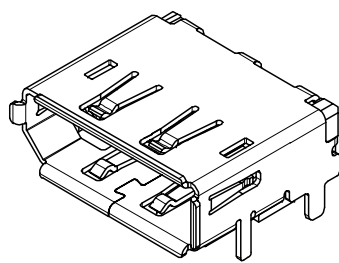
2. PLATING:

TERMINAL: CONTACT AREA 0.76 MICROMETER GOLD PLATING AND SOLDER TAIL 1-3 MICROMETER TIN BISMUTH UNDER PLATE 1-3 MICROMETER NICKEL PLATING OVERALL.
 SHELL: 1.27~2.54 MICROMETER SOLDERABLE NICKEL PLATING OVERALL.

3. SOLDER TAIL COPLANARITY 0.10 MAX.



RECOMMENDER PCB LAYOUT (THICKNESS=1.6±0.15)



NEW RELEASE EC NO: SH2007-0661 DRWN: HHE CHKD: HWANG APPR: JNCHEN	2007/03/20 2007/03/21 2007/03/23	QUALITY SYMBOLS ▽=0 ▽=0	GENERAL TOLERANCES (UNLESS SPECIFIED)		DIMENSION STYLE MM ONLY	SCALE 1:1	DESIGN UNITS METRIC	THIRD ANGLE PROJECTION			
			4 PLACES ± --- ± ---	3 PLACES ± --- ± ---	2 PLACES ± 0.25 ± ---	1 PLACE ± 0.25 ± ---	DRAWN BY RZHANG	DATE 2005/07/01	TITLE 1.0 DISPLAY PORT RECEPTACLE ASSEMBLY		
			ANGULAR ± 3 °				CHECKED BY IWANG	DATE 2005/07/01	MOLEX INCORPORATED		
			DRAFT WHERE APPLICABLE MUST REMAIN WITHIN DIMENSIONS				APPROVED BY JNCHEN	DATE 2005/07/01	MATERIAL NO. 47272-0001	DOCUMENT NO. SD-47272-001	SHEET NO. 1 OF 1

9 8 7 6 5 4 3 2 1