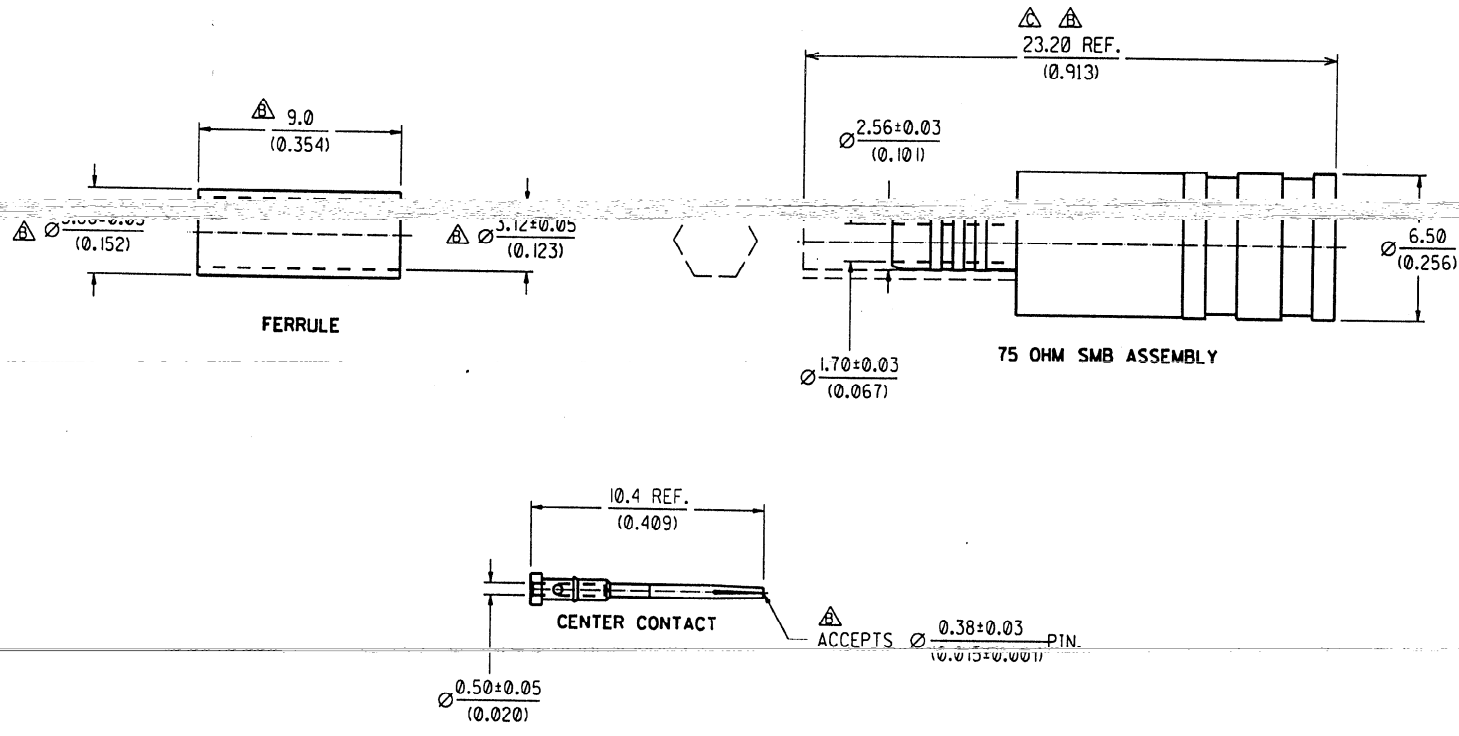


SDA-73100-0255
 ENG. NO
 EDP NO
 SIMILAR ITEM 73100-0230
 CADFILE NO. S1000255.dgn

8 7 6 5 4 3 2 1

F
 E
 D
 C
 B
 A



CABLE ATTACHMENT:
 OUTER CONDUCTOR: CRIMP (HEX:3.25)
 CENTER CONDUCTOR: CRIMP (HEX:0.65)
 ASSEMBLY INSTRUCTIONS: AS-73597-0071

CONSTRUCTION:
 BODY ----- BRASS
 DIELECTRIC ----- TEFLON
 CENTER CONTACT ----- BERYLLIUM COPPER
 FERRULE ----- BRASS
 RETAINING RING ----- BERYLLIUM COPPER

FINISH:
 BODY ----- GOLD PLATING (FLASH)
 CENTER CONTACT ----- GOLD PLATING (FLASH)
 FERRULE ----- GOLD PLATING (FLASH)

MECHANICAL AND ELECTRICAL CHARACTERISTICS:
 PER PRODUCT SPECIFICATION PS-73598-0104

PACKAGING:
 INDIVIDUAL ESD PLASTIC BAGS AND 50pc BULKPAC

				MATERIAL : SEE NOTES		MOLEX TAIWAN LTD.	INT. DIVISION	
				FINISH : SEE NOTES			GENERAL TOLERANCES ANGLE : ± 3° DIM. : ± 0.25 (±.01)	
				SCALE : 5:1	UNIT : mm(INCH)		DRW. NO.:	REV
C	CHANGE DIM.	0958	Jason	97/02/14	DRAWN BY : SEAN CHEN 95/11/22		SDA-73100-0255	C
B	CHANGE DIM.	0727	Lynn	96/01/16	CHK'D BY : <i>Wilson</i>			
A	Release to manufacturing	0685	SEAN	95/11/22	APPR'D BY : <i>Wilson</i>			
LTR	REVISION RECORD	ECN	DR	DATE	TITLE :		SPECIAL 75 OHM STRAIGHT SMB PLUG FOR RG 179/U CABLE	
STANDARD ITEM				<input type="checkbox"/> YES <input checked="" type="checkbox"/> NO		SHEET 1 OF		

DO NOT SCALE DRAWING

THIS DRAWING CONTAINS INFORMATION THAT IS PROPRIETARY TO MOLEX TAIWAN AND SHOULD NOT BE USED WITHOUT WRITTEN PERMISSION MXT , So - 13

SMB75-PC