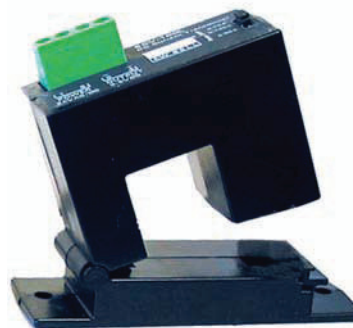


## Description

The SCC Series provides either a 4-20mA or 0-20mA unipolar output proportional to DC current. The SCV Series provides either a 0-5V or 0-10V unipolar output proportional to DC current. The SCC and SCV clamp around existing wiring for easy installation. All models work with AC or DC operating voltage. All models are panel mounted, feature jumper range selection and are UL listed.



## Features

- Jumper selectable ranges
- Split core for easy installation
- Wide supply voltage range
- Output scaling for common data acquisition systems

## Applications

- Sense broken belts on motors
- Detect open heater strips
- Sense clogged air filters
- Detect burned out navigation lights
- Operational status of fans, motors and pumps.

## Current Ranges

50/75/100 A DC .....	SCC-100C	—	SCC-100P	—	SCV-100L	—	SCV-100H
100/150/200 A DC .....	SCC-200C	—	SCC-200P	—	SCV-200L	—	SCV-200H
150/225/300 A DC .....	SCC-300C	—	SCC-300P	—	SCV-300L	—	SCV-300H

## General Information

Supply Voltage .....	20-50 VDC or 22-38 Vac RMS	
Supply Current .....	80 mA Max.	
Output Polarity .....	Unipolar for + or - current	
Output .....	0-20 mA	4-20 mA
Load Resistance (for rated accuracy) ....	0	0
Maximum Load Resistance .....	650 ohms	650 ohms
Accuracy .....	1% F.S. (100A + 200A)	1.5 % F.S. (300A)
Response Time (to 90% of step change) ...	100 ms	
Dielectric Strength .....	3 kV, 50/60 Hz, one minute	
Operating Temperature Range .....	-20 to +50°C	
Storage Temperature Range .....	-30 to +60°C	

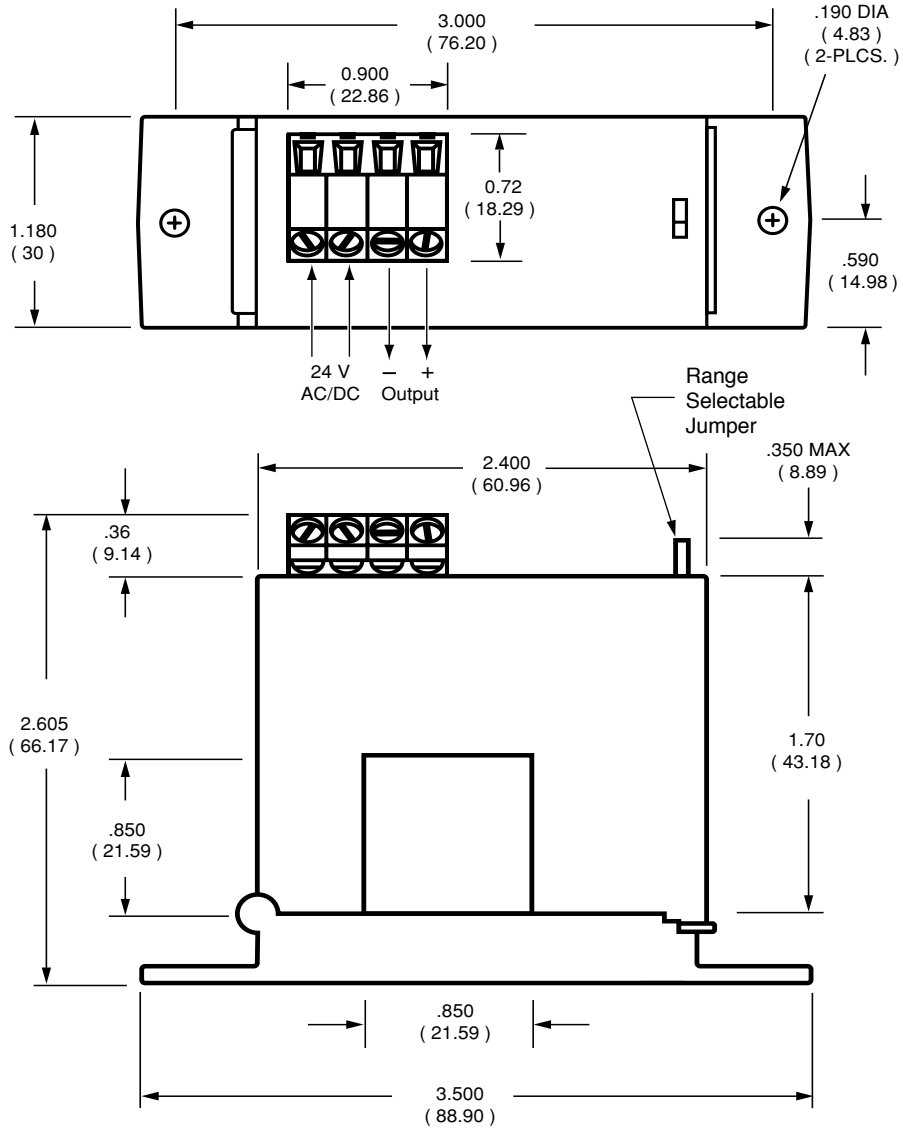
## Notes:

1. Current Ranges are selected by a jumper on the sensor.
2. Due to continuous process improvement, all specifications are subject to change without notice.

# Mechanical Dimensions

All dimensions are in inches (millimeters)

Model **SCC** and **SCV**



**Note:** Due to continuous process improvement, all specifications are subject to change without notice.

Current Sensors