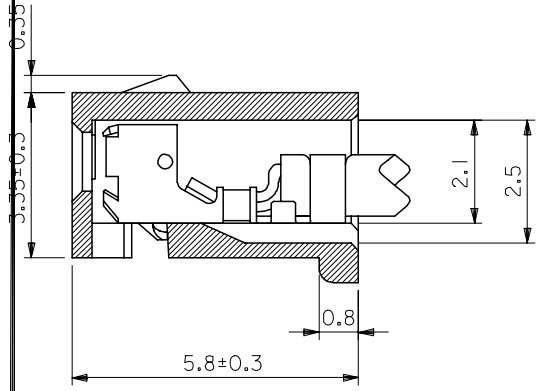
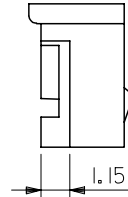
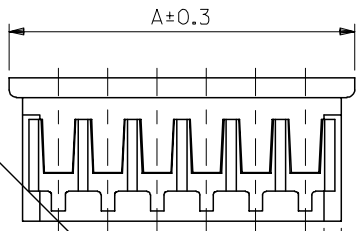
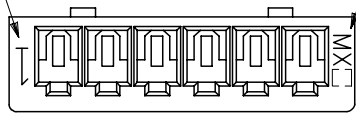


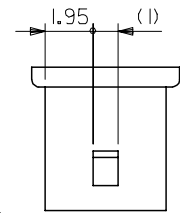
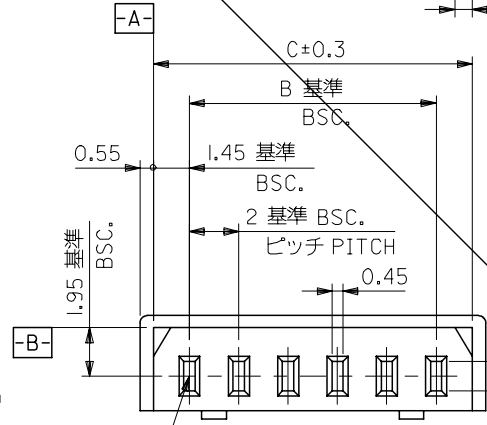
DWG. NO.
SD-51004-**00

回路番号
CIRCUIT NO.

トレードマーク
TRADE MARK



ターミナル装着状態
TERMINAL ASSEMBLY DRAWING
(10:1)

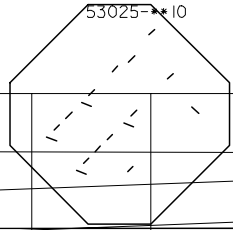


2極の場合
IN CASE OF 2 CIRCUIT HSG.

- 注)
NOTE.
1. 適合ターミナル: 50011-8*00
ACCEPTS TERMINAL
 2. 嵌合相手: 53014-**10
MATES WITH 53015-**10

⊕ ⌀0.4 A B

32	30.9	28	51004-1500	15
30	28.9	26	-1400	14
28	26.9	24	-1300	13
26	24.9	22	-1200	12
24	22.9	20	-1100	11
22	20.9	18	-1000	10
20	18.9	16	-0900	9
18	16.9	14	-0800	8
16	14.9	12	-0700	7
14	12.9	10	-0600	6
12	10.9	8	-0500	5
10	8.9	6	-0400	4
8	6.9	4	-0300	3
6	4.9	2	51004-0200	2
A	C	B	ENG.NO.	極数 CIRCUIT



DO NOT SCALE DRAWING

REDRAWN K2000-0629 K.KOHAMA T.YAMAGUCHI M.FUKUSHIMA	DESCRIPTION PBT. UL94V-0 POLYESTER UL94V-0	GENERAL TOLERANCES: (UNLESS SPECIFIED)	SCALE 5:1	- I IT <input checked="" type="checkbox"/> I <input type="checkbox"/> H	THI - - I H	DIMENSIONS: <input type="checkbox"/> I <input type="checkbox"/> H <input checked="" type="checkbox"/> I <input type="checkbox"/> H	SHT REV
		DRAWN BY & DATE K.KOHAMA 007/3/28	CHECKED BY & DATE T.YAMAGUCHI 007/3/30	TITLE: 2.0 LOW-PRO REC. HSG.	REVISION CAD ONLY		
REV	DESCRIPTION	DATE	APPROVED M.FUKUSHIMA 007/3/30	CAD FILENAME S51004.S01	MATERIAL NO. 51004-**00	DRAWING NO. SD-51004-**00	SHEET NO. 1

S51004.S01