



REDINGTON

What the world is counting on.

The Redington Model 732 provides a DC Hour Meter with an operating range of 10-80VDC. Models are protected for two times battery voltage and/or reverse polarity. Models are available in the standard industry housings. Its quartz time base insures accurate long-term time keeping. The Totally Sealed case protects against the environment and provides years of reliable service. All applicable models are NEMA 4X, 12 rated when mounted with optional gasket.

Features

- Operating voltage 10-80VDC
- Totally Sealed
- UL/cUL Recognized, CE & RoHS Compliant, NEMA & SAE
- 6 Figure, 99999.9
- Quartz accuracy

Options

- Wire leads
- Gaskets (for NEMA 4X, 12 rating)
- Custom Labeling
- Custom Terminals (up, down, straight)
- Adapter bezels for various panels

Specifications

Figures: 6 - digits, 0.14" [3.6mm] 99999.9
Hours and running indicator - white on black
Decimal - black on white

Reset: Non-reset

Voltage: 10-80VDC

Power: 1 watt max.

Mounting: Clip, Mounting Holes, Cup, or Stirrup

Termination: ¼" [6.3mm] spade terminals

Weight: ~2.0 oz [57 g]

Accuracy: ± 0.02% over entire range

Bezel: Stirrup and Cup mount have polished stainless steel bezels

Case Material: Black polymer

Lens Material: Cup & Stirrup - Glass; Other Models - Polymer

Transient Protection: ± 6 times normal for 300msec

Agency Approvals: UL/cUL Recognized, CE & RoHS Compliant, SAE & NEMA 4X, 12 Compliant

Overvoltage & Reverse Polarity: Protected for 2 times battery voltage and/or reverse polarity

Environmental: Totally Sealed

Front Panel: NEMA 4X, 12 rated with optional gasket

Temperature: -40°F to +185°F [-40°C to + 85°C]

Humidity: 95% (SAE J1378)

Shock: 55g @ 9 - 13msec (SAE J1378)

Vibration: 10-80Hz. 20g max. (SAE J1378)

Models

- 732-0001
- 732-0002
- 732-0003
- 732-0004
- 732-0013*
- 732-0023*
- 732-0030*

Description

- 3-Hole, Round
- Flush, Rectangular, Clip
- Flush, Round, Clip
- 2-Hole, Rectangular
- Panel mt, Round, Cup
- Panel mt, Round, Stirrup
- 48mm Sq. Panel, Clip

Optional Accessories

- 5003-011 (NEMA 4X, 12 Gasket)
- 5003-009 (NEMA 4X, 12 Gasket)
- 5003-008 (NEMA 4X, 12 Gasket)
- 5003-010 (NEMA 4X, 12 Gasket)
- 1662-026 (55mm Sq. Panel Adapter)
- 1662-024 (72mm Sq. Panel Adapter)
- 1662-025 (72mm Rd. Panel Adapter)

*Gasket Not Available

Applications

Agricultural Equipment	Utility Vehicles	Construction Equipment	Pressure Washers	Outdoor Power Equipment

MODEL 732

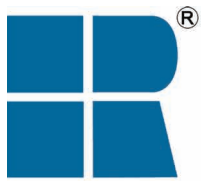
DC HOUR METERS

- ✓ Reliability
- ✓ Precision
- ✓ Quality
- ✓ Value

Phone: (860) 688-6205

www.redingtoncounters.com

Fax: (860) 688-1591



REDINGTON

What the world is counting on.

The Redington Model 722 provides an AC Hour Meter with an operating range of 90-264VAC 50/60 Hz. You no longer require two separate meters, one for 115VAC and one for 230VAC. Models are available in the standard industry housings. Its quartz time base insures accurate long-term time keeping. The Totally Sealed case protects against the environment and provides years of reliable service. All applicable models are NEMA 4X, 12 rated when mounted with optional gasket.

Features

- Operating voltage 90-264VAC 50/60Hz
- Totally Sealed
- UL/cUL Recognized, CE & RoHS Compliant, SAE & NEMA
- 6 Figure, 99999.9
- Quartz accuracy

Options

- Wire leads
- Gasket kit (for NEMA 4X, 12 rating)
- Custom Labeling
- Terminals up, down, straight
- Adapter bezels for various panels

Specifications

- Figures:** 6 - digits, 0.14" [3.6mm] 99999.9
Hours and running indicator - white on black
Decimal - black on white
- Reset:** Non-reset
- Voltage:** 90-264VAC
- Frequency:** 50/60Hz
- Power:** 1 watt max.
- Mounting:** Clip or Mounting Holes
- Termination:** ¼" [6.3mm] spade terminals
- Weight:** ~2 oz [57 g]
- Accuracy:** ± 0.02% over entire range
- Case Material:** Black polymer
- Lens Material:** Polymer
- Agency Approvals:** UL/cUL Recognized, CE & RoHS Compliant, SAE & NEMA 4X, 12 Compliant
- Environmental:** Totally Sealed
- Front Panel:** NEMA 4X, 12 rated with optional gasket
- Temperature:** -40°F to +185°F [-40°C to + 85°C]
- Humidity:** 95% (SAE J1378)
- Shock:** 55g @ 9 - 13msec (SAE J1378)
- Vibration:** 10-80 Hz. 20g max. (SAE J1378)

Models

Description

Optional Accessories

722-0001	2-Hole, Rectangular	5003-010 (NEMA 4X, 12 Gasket)
722-0002	Flush, Rectangular, Clip	5003-009 (NEMA 4X, 12 Gasket)
722-0003	Flush, Round, Clip	5003-008 (NEMA 4X, 12 Gasket)
722-0004	3-Hole, Round	5003-011 (NEMA 4X, 12 Gasket)
722-0030*	48mm Sq. Panel, Clip	1662-026 (55mm Sq. Panel Adapter) 1662-024 (72mm Sq. Panel Adapter) 1662-025 (72mm Rd. Panel Adapter)

*Gasket Not Available

Applications

Floor scrubbers



Air Compressors



Control Panels



Generators



Oxygen Concentrators



Irrigation Systems



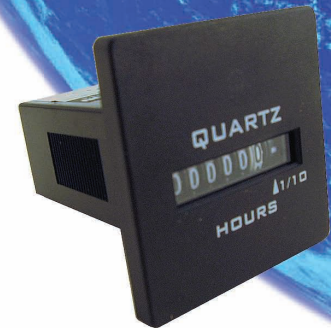
Tanning Booths



Phone: (860) 688-6205

www.redingtoncounters.com

Fax: (860) 688-1591



MODEL 722

AC HOUR METERS

- ✓ Reliability
- ✓ Precision
- ✓ Quality
- ✓ Value