

# sockets enclosure Spacial 3D steel enclosure

## wall fixing lugs

- Set of 4 wall fixing lugs.
- Mounted vertically or horizontally directly on enclosure rear panel.
- Two lug types, steel and stainless steel, for 10 mm spacing from wall.
- Maximum permissible load: 4 x 60 kg.
- Supplied with fixings and protection seals.
- Fixing centres, see page 63.

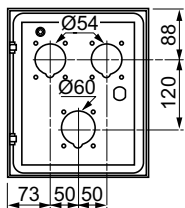


reference	material
ENN51206	steel
ENN51207	stainless steel

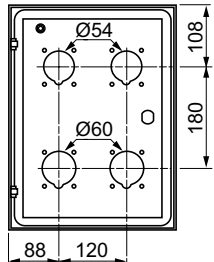
## dimensions (Detail, see page 86)

### Door mounted sockets

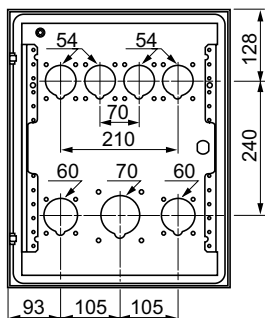
ENN83210/83220



ENN83211/83221

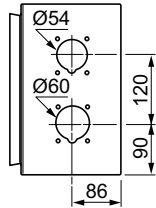


ENN83212/83222

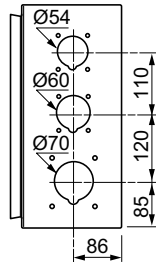


### Side mounted sockets (1)

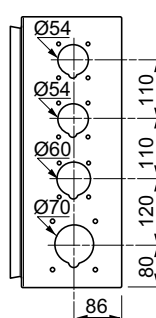
ENN83213/83223



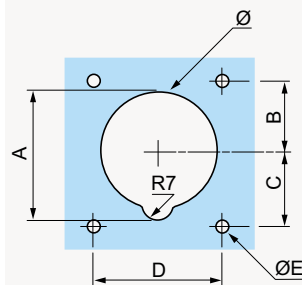
ENN83214/83224



ENN83215/83225



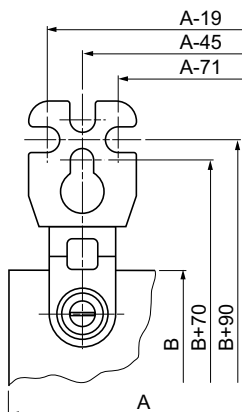
(1) Sockets on the two sides.



prise	A	B	C	D	ØE
Ø54	59	28	32	52	5
Ø60	65,5	28	32	52	5
Ø70	76	39,5	45,5	77	5,5

## fixing centres with lugs (M8 screw)

### vertical position



### horizontal position

