

## boxes with entries, size < 105x105 mm

- IP55, IK07 (2J); incandescent wire resistance: 650°C.
- Used as junction box for normal circuits (in ERPs to art. EL10, housing and industry).

## boxes with entries, size ≥ 105x105 mm

- IP55, IK07 (2J); incandescent wire resistance: 750°C.
- Used as junction box or incorporated in electrical control panel (in ERPs to Art. EL9, housing and industry).



### 2 colours available

- Grey RAL7035 or white RAL9010 to adapt to all installation types: from basements to laboratories to collective kitchens.

## entries with EVA membrane or stepped for cables and conduits

- Direct introduction without tools of rigid cables up to diameter 14 mm.
- Introduction of cables > Ø 14 mm and of conduits by removing step of the appropriate diameter.
- All entries are interchangeable.

### practical

- Identification of entry step diameters.
- Numbering of entries to facilitate circuit identification.

## boxes with entries < 105 x 105 mm

internal dimensions (mm)			IP55 IK07 650°C		cover	entries for cables and conduit (Ø min - max)			
H	W	D	grey	white		4/20	4/25	4/32	4/40
60		40	<b>05001</b>	<b>05021</b>	clip-in	4	-	-	-
65	65	45	<b>05002</b>	<b>05022</b>	clip-in	4	-	-	-
65	65	45	<b>05032</b>	<b>05072</b>	clip-in	7	-	-	-
105	65	55	<b>05003</b>	<b>05023</b>	clip-in	8	-	-	-
80	80	45	<b>05004</b>	<b>05024</b>	clip-in	7	-	-	-

## boxes with entries ≥ 105 x 105 mm

internal dimensions (mm)			IP55 IK07 750°C		cover	entries for cables and conduit (Ø min - max)			
H	W	D	grey	white		4/20	4/25	4/32	4/40
105	105	55	<b>05005</b>	<b>05025</b>	1/4-turn screw	-	7	-	-
150	105	80	<b>05007</b>	-	1/4-turn screw	-	10	-	-
175	150	80	<b>05010</b>	-	1/4-turn screw	-	10	2	-
225	175	100	<b>05013</b>	-	1/4-turn screw	-	4	8	-
275	225	120	<b>05017</b>	-	1/4-turn screw	-	-	16	4
325	275	120	<b>05019</b>	-	1/4-turn screw	-	-	10	6



entries and accessories

see page 14

ducting connection

see page 17

## safety circuits boxes with entries

- IP55, IK07 (2J); incandescent wire resistance: 960°C.
- Used as junction box for safety circuits (in ERPs to Art. EL10, housing and industry).

## special boxes for safety circuits

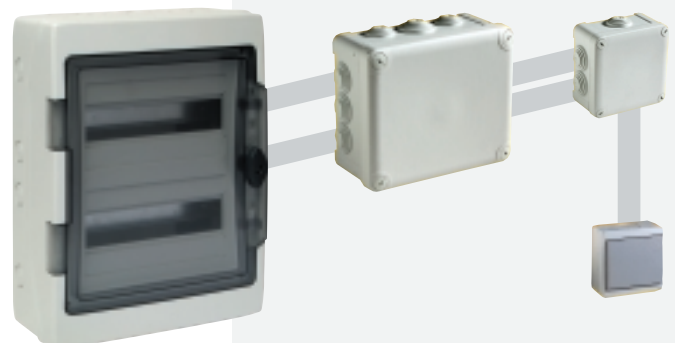
internal dimensions (mm)			IP55 IK07 960°C		cover	entries for cables and conduit (Ø min - max)	
H	W	D	red			4/20	4/25
80	80	45	<b>05164</b>		clip-in	7	-
105	105	55	<b>05165</b>		1/4-turn screw	-	7
150	105	80	<b>05167</b>		1/4-turn screw	-	10

### smart

- Red box to connect safety circuits.

### it's pro!

- MUREVA family products can be associated for simplified installation offering professional quality.
- A rugged, sealed and perfectly aligned installation.



When ordering in the UK please add the prefix ENN to the reference number