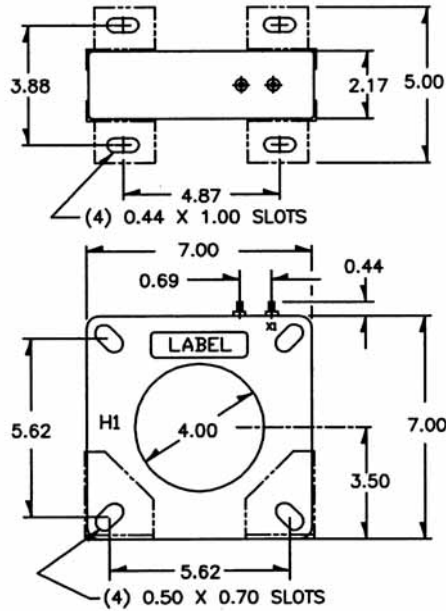
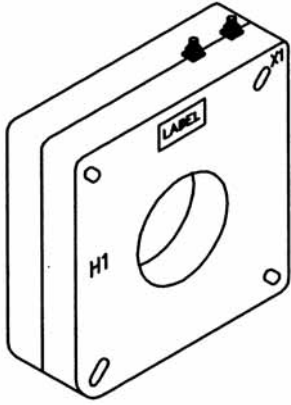
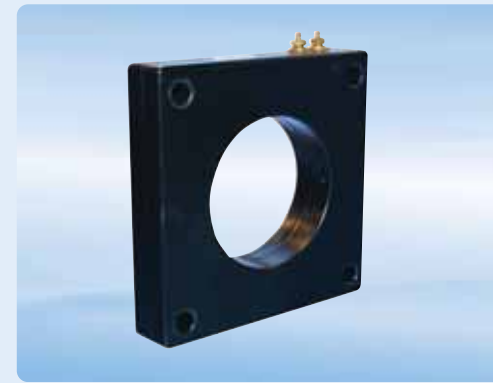


Model 100

Window Diameter 1.56", 2.0", 2.5"



Catalogue Number	Current Ratio	V.A. for ±1% class	ANSI Metering class at 60Hz					Secondary winding resistance (OHMS @ 75° C)	Continuous thermal rating factor	
			B0.1	B0.2	B0.5	B0.9	B1.8		@30° C	@55° C
100 - 201	200:5	C10	0.6	0.6	1.2	2.4	-	0.057	2.0	2.0
100 - 301	300:5*	C10	0.3	0.3	0.6	1.2	-	0.091	2.0	2.0
100 - 401	400:5*	C20	0.3	0.3	0.6	0.6	1.2	0.133	2.0	2.0
100 - 501	500:5*	C20	0.3	0.3	0.3	0.6	1.2	0.166	2.0	1.5
100 - 601	600:5*	C20	0.3	0.3	0.3	0.3	0.6	0.199	2.0	1.5
100 - 801	800:5*	C20	0.3	0.3	0.3	0.3	0.3	0.266	1.5	1.33
100 - 102	1000:5*	C50	0.3	0.3	0.3	0.3	0.3	0.332	1.5	1.0
100 - 122	1200:5*	C20	0.3	0.3	0.3	0.3	0.3	0.374	1.5	1.0
100 - 152	1500:5*	C20	0.3	0.3	0.3	0.3	0.3	0.468	1.33	1.0
100 - 162	1600:5*	C50	0.3	0.3	0.3	0.3	0.3	0.499	1.33	1.0
100 - 202	2000:5*	C50	0.3	0.3	0.3	0.3	0.3	0.624	1.0	0.8
100 - 252	2500:5*	C50	0.3	0.3	0.3	0.3	0.3	0.735	1.0	0.8
100 - 302	3000:5*	C50	0.3	0.3	0.3	0.3	0.3	0.882	1.0	0.8



Application:
Relaying and metering

Frequency:
50 - 400Hz

Insulation Level:
600 Volts, 10kV BIL full wave

- Terminals are brass studs No. 8 - 32 with one flatwasher, lockwasher and regular nut
- Order mounting bracket kit separately
- Multi-ratios available upon request
- Approximate weight: 9.5 lbs

Approvals

UL [®] **US** UL 257877
CSA 223647

