

industrial boxes, steel IP 40, IP 44 and IP 66

IP 40/IP 44

technical characteristics

- Resistance to external mechanical impact: IK 08.
- Textured epoxy polyester powder paint finish, colour grey RAL 7032.
- Cover attachment by 4 screws.
- Seated polyurethane sealing gasket.
- Wall mounting:
 - for IP 40 boxes: through enclosure rear,
 - for IP 44 boxes: by welded fixing lugs.
- With or without stepped entries, depending on model.

applications

- Applications not requiring a high degree of environmental protection.



Steel industrial boxes IP 40 and IP 44

IP 66

technical characteristics

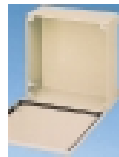
- Resistance to external mechanical impact: IK 08.
- Textured epoxy polyester powder paint finish, colour grey RAL 7032.
- Cover attachment by 4 screws.
- Seated polyurethane sealing gasket.
- Wall mounting: by welded fixing lugs.
- Earthing screw on both body and cover to maintain continuity.
- 3 versions:
 - boxes with no fixings,
 - boxes with fixing points for plate,
 - boxes with rails on 12.5 mm pitch.

applications

- Applications requiring a good degree of environmental protection.



Steel industrial boxes IP 66

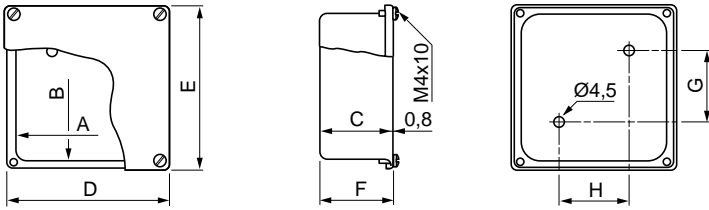


internal dimensions in mm			IP40 boxes reference	IP 44 boxes reference	IP 66 boxes reference			plate reference	
height	width	depth	reference	with entries	number	without fixings	with plate fixings	with 2 rails	reference
80	80	45	ENN04065	ENN05501	4	ENN04408	—	—	—
100	100	55	ENN04105	ENN05503	6	ENN04410	—	—	—
120	165	65	—	ENN05507*	6	ENN04417	ENN04418	—	ENN24210
130	130	60	ENN04145	ENN05509	6	ENN04413	—	—	—
160	160	65	ENN04175	ENN05511	6	ENN04416	—	—	—
200	200	90	—	ENN05515*	6	ENN04420	ENN04421	—	ENN24221
200	300	110	—	—	—	—	—	ENN04403	—
	400	110	—	—	—	—	—	ENN04404	—
	500	110	—	—	—	—	—	ENN04405	—
	600	110	—	—	—	—	—	ENN04406	—
250	250	100	—	—	—	ENN04425	ENN04426	—	ENN24226
300	300	100	—	—	—	ENN04430	ENN04431	—	ENN24231
	500	110	—	—	—	—	—	ENN04435	—
	600	110	—	—	—	—	—	ENN04436	—
400	400	110	—	—	—	ENN04440	ENN04441	—	ENN24241

* Consult our local sales office.

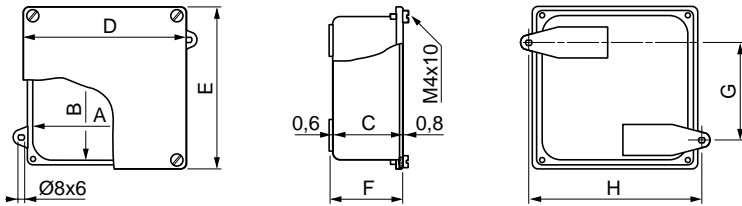
industrial boxes, steel IP 40, IP 44 and IP 66

dimensions



IP 40 boxes

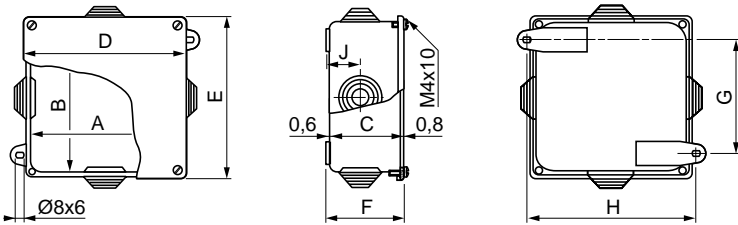
reference	internal dimensions			dimension			fixing centres H/G	gross weight kg
	A	B	C	D	E	F		
04065	79	79	43	96	96	45	48	0.160
04105	100	100	53	116	116	55	48	0.240
04145	128	128	58	142	142	60	70	0.360
04175	159	159	63	174	174	65	96	0.520



IP 66 boxes with smooth sides

reference	internal dimensions			dimension			fixing centres		gross weight kg
	A	B	C	D	E	F	H	G	
04408	79	79	45	96	96	48	100	50	0.190
04410	100	100	55	116	116	58	120	70	0.270
04413	129	129	60	142	142	63	144	100	0.300
04416	159	159	65	174	174	68	178	130	0.590

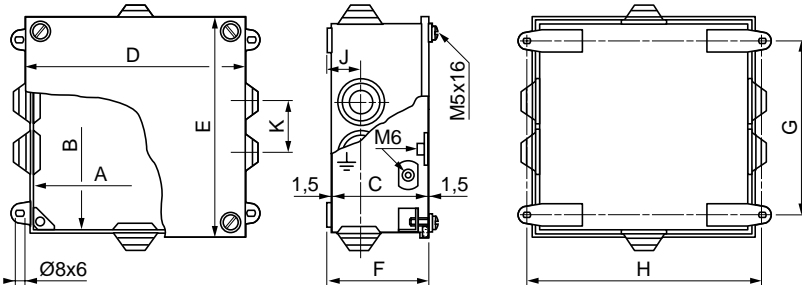
05501



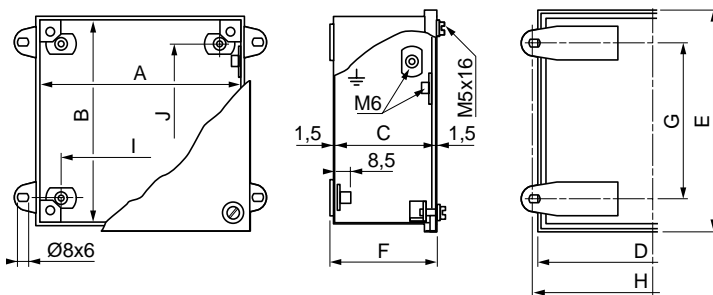
IP 44 boxes with stepped entries

reference	internal dimensions			dimension			entries		fixing centres	
	A	B	C	D	E	F	J	K	H	G
05501	79	79	45	96	96	48	24	-	100	50
05503	100	100	55	116	116	58	26	42	120	70
05507	120	165	67	129	174	72	28	42	137	137
05509	128	128	60	142	142	63	28	42	144	100
05511	159	159	65	174	174	68	28	42	178	130
05515	200	200	92	209	209	97	32	42	217	174

05503-05509-05507-05515-05511

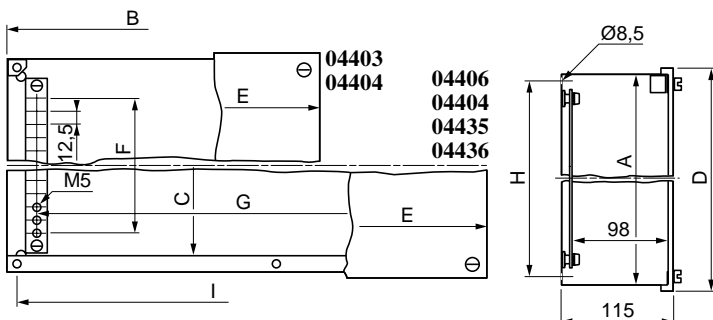


reference	number of entries	gross wt. (kg)
05501	4	0.190
05503	6	0.316
05507	6	1.100
05509	6	0.390
05511	6	0.580
05515	6	1.990



IP 66 boxes with no fixings and boxes with 4 fixing points for plate

reference	internal dimensions			dimension			box fixing centres		plate fixing centres	
	A	B	C	D	E	F	H	G	I	J
04417/18	120	165	67	131	176	72	137	137	90	140
04420/21	200	200	92	211	211	97	217	174	170	170
04425/26	250	250	102	262	262	107	267	224	220	220
04430/31	300	300	102	312	312	107	317	274	270	270
04440/41	400	400	112	412	412	117	417	374	370	370



IP 66 boxes with rails

reference	internal dimensions			dimension			uprights G	box fixing centres	
	A	B	C	D	E	F		H	I
04403	200	300	-	211	311	125	250	184	284
04404	200	400	-	211	411	125	350	184	384
04405	200	500	172	211	511	125	450	184	484
04406	200	600	172	211	611	125	550	184	584
04435	300	500	272	312	512	225	450	284	484
04436	300	600	272	312	612	225	550	284	584