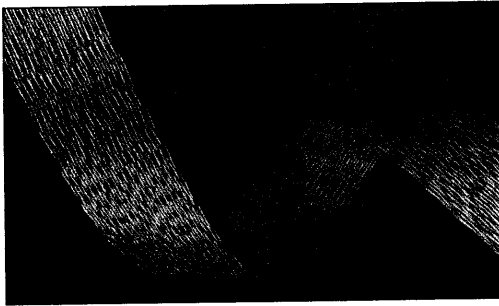


414-0916, 4141325

.025" Pitch Spectra-Mode™ Twist 'N' Flat®, 30 AWG Solid Tinned Copper, TPE Insulation 125-3011-XXX



Spectra-Strip now has the first truly "multi-mode" internal wide SCSI cable available that fully meets ANSI T10/1142 D impedance requirements for both Ultra 2 LVD (Low Voltage Differential) and Fast 20 single ended applications with one cable. Called "Spectra-Mode™", it is the latest generation of Twist 'N' Flat®, having a characteristic impedance of 93 ohms (single ended) and 131 ohms (differential). This dual mode cable allows SCSI designers to ensure

that their Ultra 2 LVD busses operate correctly when a Fast 20 single ended device is attached to the bus, and the system defaults to Fast 20 mode. Unique in the industry, this is the only cable to offer programmable twist length sections and a fully laminated construction for improved signal fidelity and greater crosstalk control on all pairs. Compared with traditional hand lamination methods of terminating SCSI cables, Twist 'N' Flat® affords considerable end product cost savings.

Features/Benefits

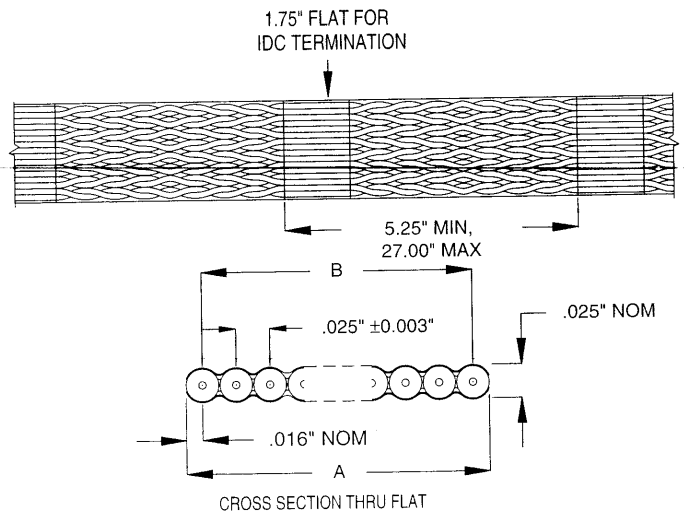
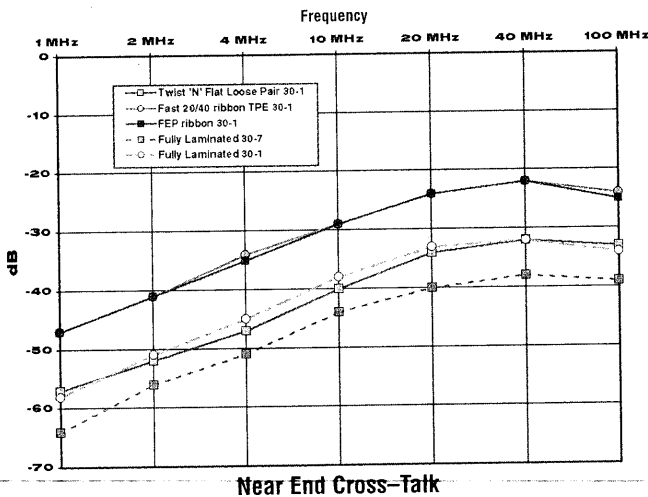
- Recommended for both Ultra 2 LVD and Fast 20 SCSI higher frequency applications
- Twisted pairs for significant crosstalk isolation
- Fully laminated construction for tighter impedance control
- Up to ten twist length combinations available
- Double sided lamination provides excellent conductor strain relief
- Reduced assembly costs compared with discrete or hand lamination terminations

Physical

Conductors: 30 awg solid tinned copper
Color: 1st pair blue / white, followed by orange / white and repeat
Insulation: .007 TPE
Laminate: Fully laminated Polyester, top and bottom
Temperature Rating: 80°C
UL Style: 20744
CSA/FT1

Electrical

Impedance: 93 ohms single ended
 131 ohms differential
Capacitance: 15.3pF / ft @ 1 MHz, single ended
 11.4 pF / ft @ 1 MHz, differential
Propagation Delay: 1.45 NS / ft nom
Voltage Rating: 150 volts
Current Rating: .75 amp
Delay Skew: .035 ns / ft max
Crosstalk: see chart



Ordering Information

XXX=s unique part number for flat section center to center dimension

No. Cond.	Width 'A'		Span 'B'	
	Min	Max	Min	Max
68				