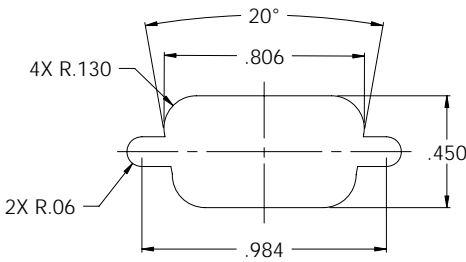
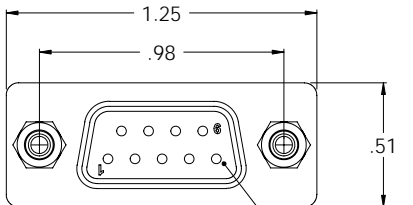
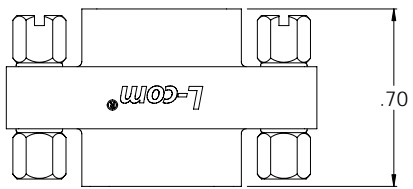


THE INFORMATION CONTAINED IN THIS DRAWING IS THE SOLE PROPERTY OF L-COM, INC. ANY REPRODUCTIONS IN PART OR WHOLE WITHOUT THE WRITTEN PERMISSION OF L-COM, INC. IS PROHIBITED.

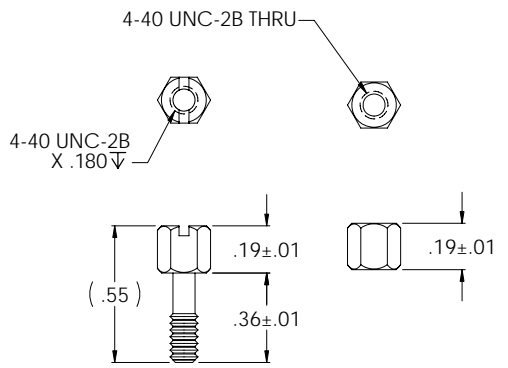
REVISIONS			
REV	DESCRIPTION	DATE	APPROVED
D	ECN #1630 - CHG'D COMPONENT SPECIFICATION TABLE	01/05/04	B.MAZERKA
E	REVISED ADDED HARDWARE DETAIL (ECN #1284)	01/06/03	MCCORMICK
F	REVISED/UPDATED ELECTRICAL SPECS	02/21/03	MCCORMICK
G	ECN# 2498: REVISED SHEET TOLERANCE	01/17/07	MCCORMICK



RECOMMENDED PANEL OPENING
(MAX PANEL THICKNESS: 0.06")



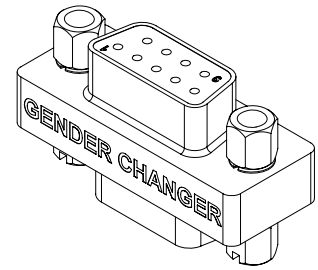
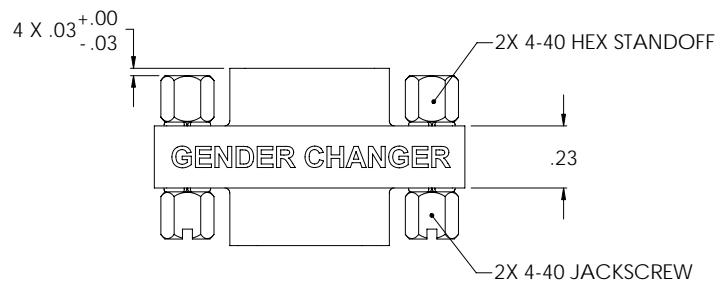
2X FEMALE, 9 PIN
D-SUB CONNECTOR



JACKSCREW & HEX STANDOFF
SPECIFICATION

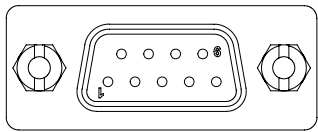
APPLICATION NOTES:
ALL PINS WIRED STRAIGHT THROUGH

LABELING:
PANTONE 2945 BLUE. "L-COM" FONT MyriaMM ITALIC.
"GENDER CHANGER" FONT ARIAL BOLD, TEXT HEIGHTS: .085"
TEXT COLOR; WHITE.



OUTLINE DRAWING

Component Specifications	
Material	
Shell	Steel
Contacts/Terminals	Copper Alloy
Hardware	Brass
Insulator	PBT Fiber Reinforced (UL 94V-0 Rated)
Finish	
Shell	Tin/Nickel Plated
Contacts/Terminals	Gold Flash Plated: 1 - 1.5µ inches
Hardware	Nickel Plated
Electrical	
Current Rating	3 AMP
Insulation Resistance	1000 MΩ Min @ 500 VDC
Dielectric Withstanding Voltage	1000 VAC (for One minute)
Environmental	
Operational Temperature Range	-55°C to +105°C



DIMENSIONS ARE IN INCHES (mm)
UNLESS OTHERWISE SPECIFIED,
TOLERANCES TO BE:
X .1 [2.5] ANGLES ±°
XX .05 [1.3]
XXX ±.005 [1.3]
OVERALL CABLE LENGTH TOL:
40 [1524] ±.176 [21] / 0
60 [1524] ±.5% / 0%

APPROVALS	DATE
DRAWN BY D.PARIAM	11/12/2001
CHECKED BY T.CLARK	11/12/2001
APPROVED BY R.CARRICK	11/13/2001

		45 BEECHWOOD DRIVE NORTH ANDOVER, MA 01845	
CATEGORY D-SUBMINIATURE			
PRODUCT DESCRIPTION GENDER CHANGER, DB9 FEMALE/FEMALE			
SIZE B	PSCM NO. 43321	DWG. NO. DGB9F-OD1	REV. G
SCALE: 2:1		CAD FILE: DGB9F-OD1.SLDDRW	
		SHEET 1 OF 1	

CONFIGURATION DETAILS OF
UNDIMENSIONED FEATURES
MAY VARY