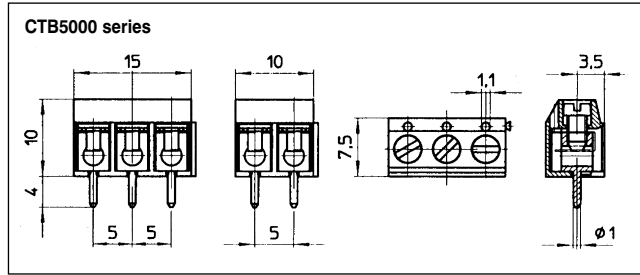
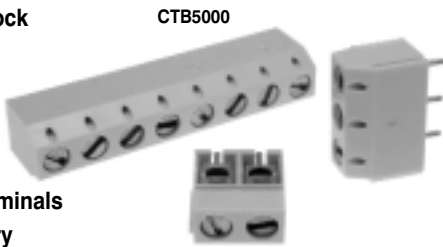


5mm Pitch **Low Profile** Screw Terminal

Features

- 2 & 3 pole interlocking
- 4-12 pole solid block end stackable
- Test probe facility
- Moulded in grey UL94-V0 flame retardant Lexan
- Wire protector terminals
- 1.5mm² cable entry
- cUL, UL, VDE, & CE approved VDE pending on 2 & 3 pole
- Anti solder wicking terminal
- Guided pin alignment



Type No.	Poles	Length
CTB5000/2	2	10mm
CTB5000/3	3	15mm
CTB5000/4	4	20mm
CTB5000/5	5	25mm
CTB5000/6	6	30mm
CTB5000/7	7	35mm
CTB5000/8	8	40mm
CTB5000/9	9	45mm
CTB5000/10	10	50mm
CTB5000/11	11	55mm
CTB5000/12	12	60mm

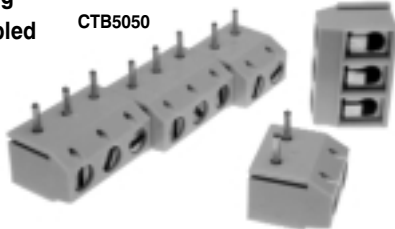
Specification

Rating	16A/250V
Dielectric strength	≥ 2kV
Insulation resistance	≥ 5MΩ
Working temperature	-20°C to 125°C
Short period	160°C
Moulding	UL94-V0 flame retardant Lexan
Pin/terminal	5μ tinned, nickel plated brass
Wire protector	Tin plated phosphor bronze
Screw/torque	M2.5 steel, 6μ zinc colour passivated and tropicalised/0.4Nm
Recommended PCB hole size	ø1.1mm

5mm Pitch **Low Profile 90°** Screw Terminal

Features

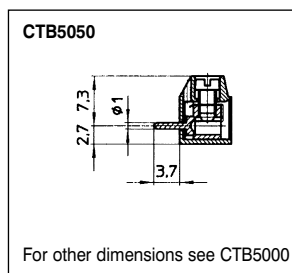
- 2 & 3 pole interlocking
- 4-12 pole pre-assembled
- Test probe facility
- 90° Mounting
- Moulded in grey UL94-V0 flame retardant Lexan
- Wire protector terminals
- 1.5mm² cable entry
- cUL, UL, & CE approved VDE pending
- Anti solder wicking terminal
- Guided pin alignment



Type No.	Poles	Length
CTB5050/2	2	10mm
CTB5050/3	3	15mm
CTB5050/4	4	20mm
CTB5050/5	5	25mm
CTB5050/6	6	30mm
CTB5050/7	7	35mm
CTB5050/8	8	40mm
CTB5050/9	9	45mm
CTB5050/10	10	50mm
CTB5050/11	11	55mm
CTB5050/12	12	60mm

Specification

Rating	16A/250V
Dielectric strength	≥ 2kV/60sec
Insulation resistance	≥ 5MΩ
Working temperature	-20°C to 125°C
Short period	160°C
Moulding	UL94-V0 flame retardant Lexan
Pin/terminal	5μ tinned, nickel plated brass
Wire protector	Tin plated phosphor bronze
Screw/torque	M2.5 steel, 6μ zinc colour passivated and tropicalised/0.4Nm
Recommended PCB hole size	ø1.1mm



PCB
TERMINAL
BLOCKS

FUSES &
FUSE-
HOLDERS

BATTERIES

LED'S

MINIATURE
SWITCHES

INTERFACE
MODULES &
SUPPORTS

ENCLOSURES

IC & PLCC
SOCKETS

RELAY
BASES

CONTROL
PRODUCTS