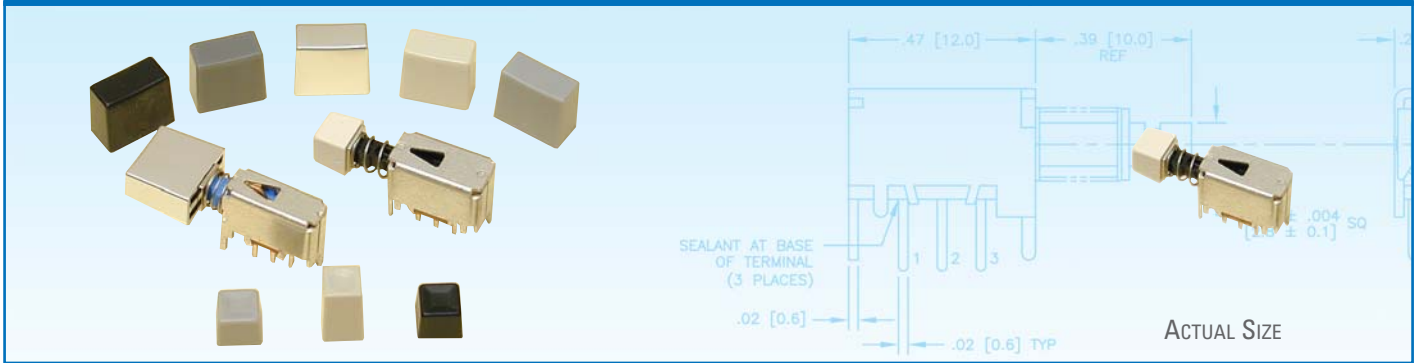


## SERIES 100



### RIGHT ANGLE MINIATURE PUSHBUTTON SWITCH

The Series 100 right angle miniature pushbutton switch is available in momentary or self-lock (maintained) action with a variety of keycap styles and colors. Ideal for high volume, low-cost electrical applications.

#### KEY FEATURES:

- Momentary or self-lock (maintained) operation
- Single or double pole
- PCB terminals
- Silver contacts

#### TYPICAL APPLICATIONS:

- Toys
- Consumer electronics
- Telcom/Datacom products
- Test and measurement
- Medical

### ORDERING INFORMATION:

#### Switch

Part Number	Switch Action	Circuit	Actuator Color
<b>100-510-501</b>	Momentary	DPDT	Black
<b>100-510-502</b>	Self-Lock (maintained)	DPDT	Blue
<b>100-510-507</b>	Self-Lock (maintained)	SPDT	Blue
<b>100-510-508</b>	Momentary	SPDT	Black

#### Keycaps

Part Number	Color*	Keycap Style
<b>55-002-230</b>	Black	Rectangular
<b>55-002-231</b>	Light Grey	Rectangular
<b>55-002-232</b>	Dark Grey	Rectangular
<b>55-002-233</b>	White	Rectangular
<b>55-002-234</b>	Bright Chrome	Rectangular
<b>55-002-235</b>	Satin Chrome	Rectangular
<b>55-002-091</b>	Sand	Large Square
<b>80-397010</b>	Light Grey	Small Square
<b>80-397012</b>	Black	Small Square
<b>80-397013</b>	White	Small Square

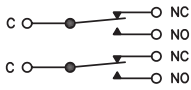
\*For other colors, please consult factory.

### STANDARDS / AGENCY / RATINGS:

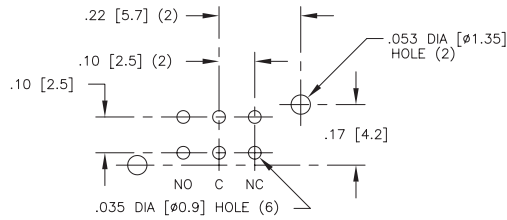


# SERIES 100—RIGHT ANGLE MINIATURE PUSHBUTTON SWITCH

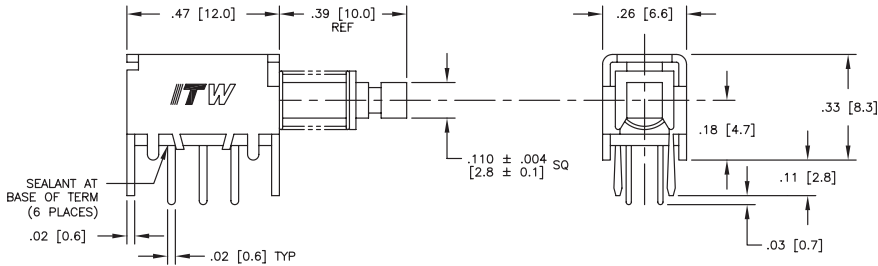
## SWITCHES:



**SCHEMATIC**



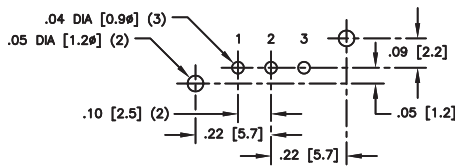
**RECOMMENDED PCB HOLE PATTERN**



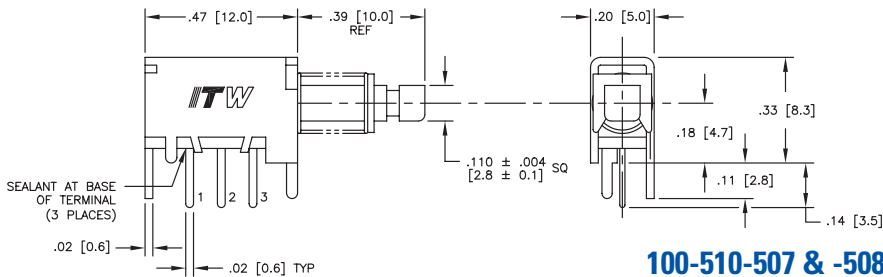
**100-510-501 & -502**



**SCHEMATIC**

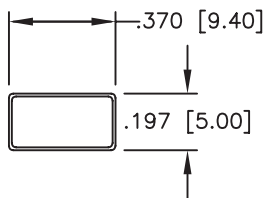


**RECOMMENDED PCB HOLE PATTERN**

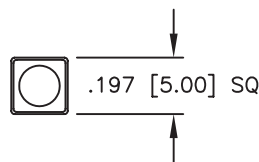


**100-510-507 & -508**

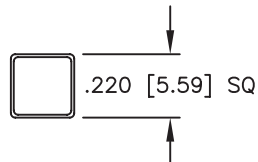
## KEYCAPS:



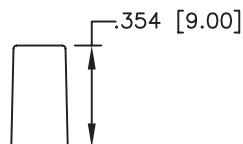
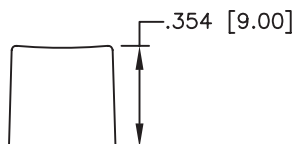
**RECTANGULAR**



**LARGE SQUARE**



**SMALL SQUARE**



**ITW Switches**

7301 W. Ainslie Street  
Harwood Heights, IL 60706

800.544.3354

708.667.3770

708.667.3440 (Fax)

[www.itwswitches.com](http://www.itwswitches.com)

[customer\\_service@itwswitches.com](mailto:customer_service@itwswitches.com)