

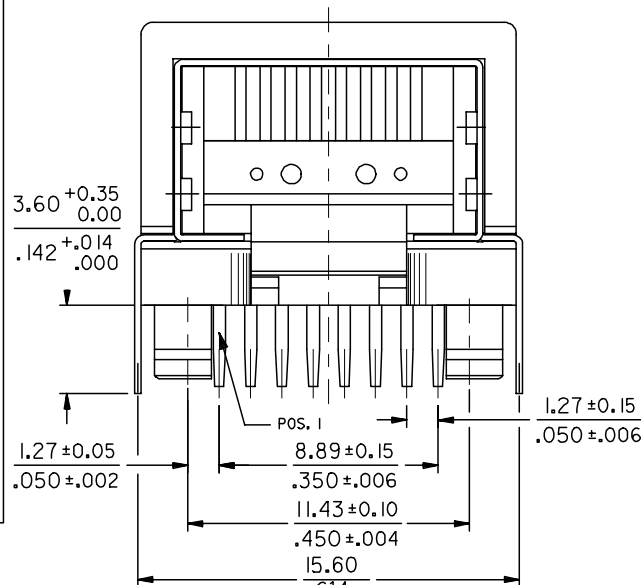
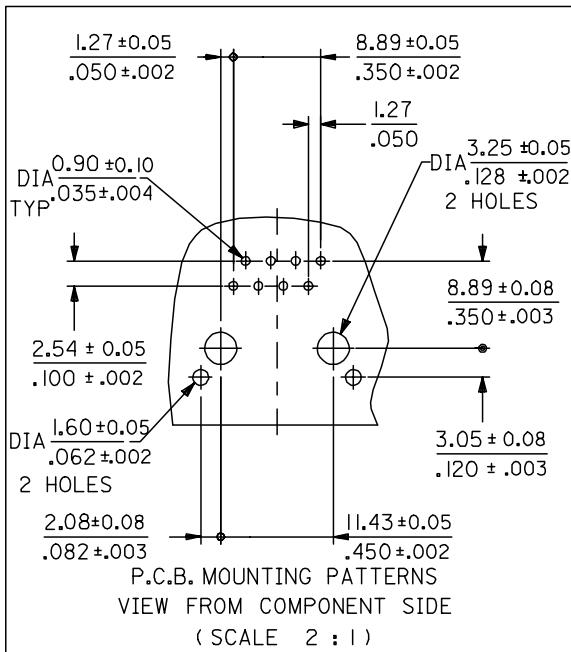
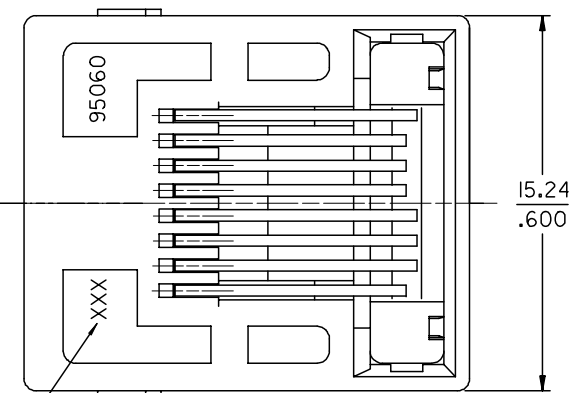
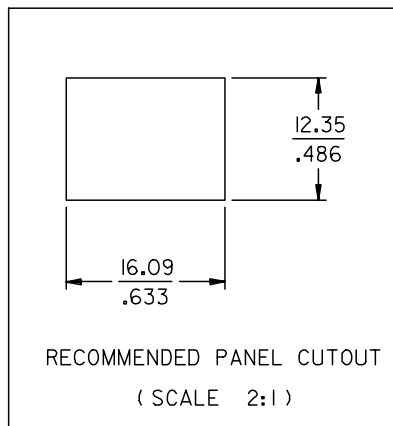
**TECHNICAL SPECIFICATIONS:**

**1- MATERIAL :**

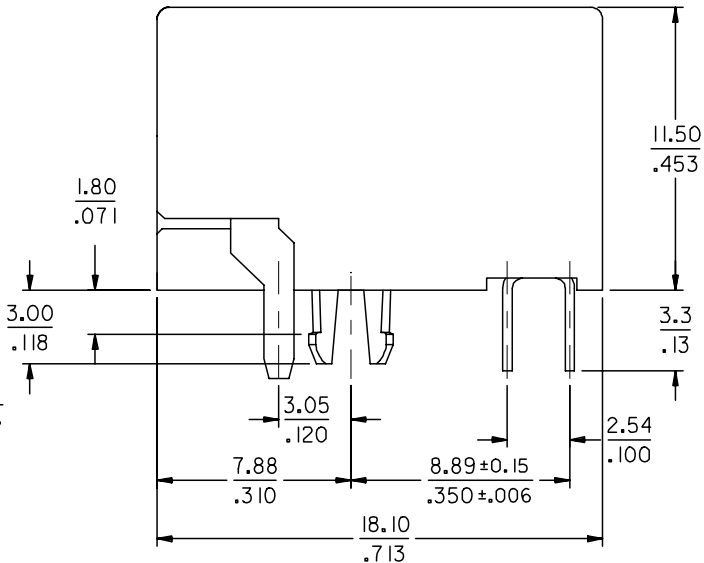
HOUSING : POLYAMIDE 4/6 UL 94V0. COLOUR: BLACK. 8992-0008  
 TERMINAL : PHOSPHOR BRONZE PLATED WITH :  
 0.00127/.000050 MIN GOLD IN CONTACT AREA,  
 0.00190/.000075 MIN PURE TIN IN TAIL AREA,  
 BOTH OVER 0.00127/.000050 MIN NICKEL OVERALL

SHIELD : BRASS PLATED WITH 0.0020/.000078 MIN TIN

2- P.C. BOARD THICKNESS : 1.57/.062



SEE NOTE 6



**NOTES:**

- 1- JACK FOR MATING WITH F.C.C. 68 PLUGS (95043 MOLEX SERIES).
- 2- PRODUCT SPECIFICATION: MOLEX PS-95040 AND PS-85505, SECTION 5.2
- 3- APPLICATION SPECIFICATION: MOLEX AS-95040
- 4- PACKAGING SPECIFICATION: MOLEX PK-95040
- 5- EXCEEDS CATEGORY 5E PERFORMANCE
- 6- LOGO MAY BE MXF, MG OR MXI

MODIFIED SIDE WALL EC NO: E2007-0791 DRWN:DBYRNES 2007/03/12 CHKD: 2007/03/12 APPR:EOMAHONY 2007/03/14	QUALITY SYMBOLS	GENERAL TOLERANCES (UNLESS SPECIFIED)		DIMENSION STYLE	SCALE	DESIGN UNITS	THIRD ANGLE PROJECTION	
	▽=0 ▽=0	mm	INCH	MM/IN	5:1	METRIC		
		4 PLACES ± --- ± ---		DRAWN BY DATE	TITLE RIGHT ANGLE LOW PROFILE CATEGORY 5 SHIELDED PC JACK (THROUGH HOLE)			
		3 PLACES ± --- ± .010		FB 99/07/07				
	2 PLACES ± 0.25 ± .014		CHECKED BY DATE	MOLEX MOLEX INCORPORATED				
	1 PLACE ± 0.35 ± ---		APPROVED BY DATE					
	ANGULAR ± 2 °		MATERIAL NO.	DOCUMENT NO.	SHEET NO.			
	DRAFT WHERE APPLICABLE MUST REMAIN WITHIN DIMENSIONS		85504-0001	SD-85504-001	1 OF 1			
			THIS DRAWING CONTAINS INFORMATION THAT IS PROPRIETARY TO MOLEX INCORPORATED AND SHOULD NOT BE USED WITHOUT WRITTEN PERMISSION					