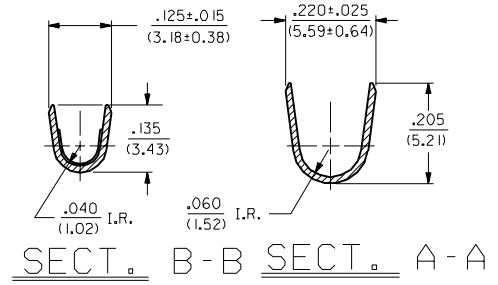
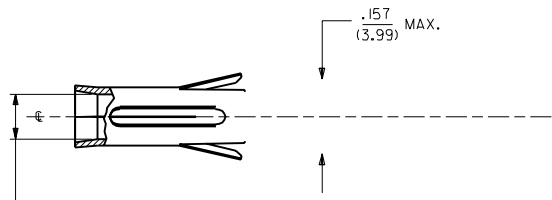
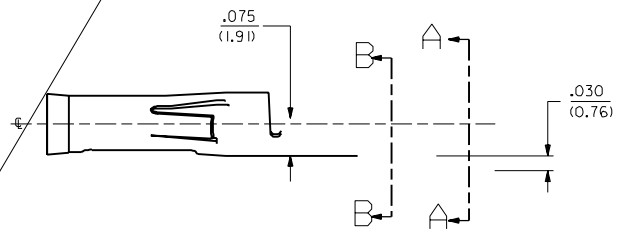
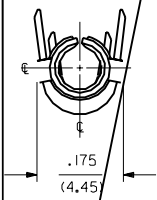
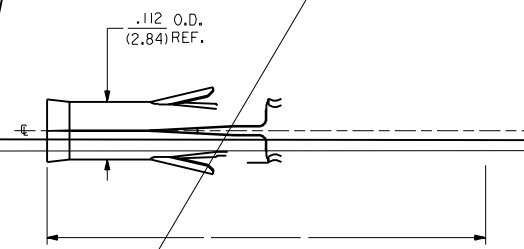


CHAIN FORM SHOWN
FULL SCALE



NOTES

4. THESE TERMINALS ARE FOR USE WITH .093/(2.36) SERIES HOUSINGS AND ACCEPT #14 THRU #18 AWG WIRE WITH A MAXIMUM INSULATION DIAMETER OF .140/(3.56).

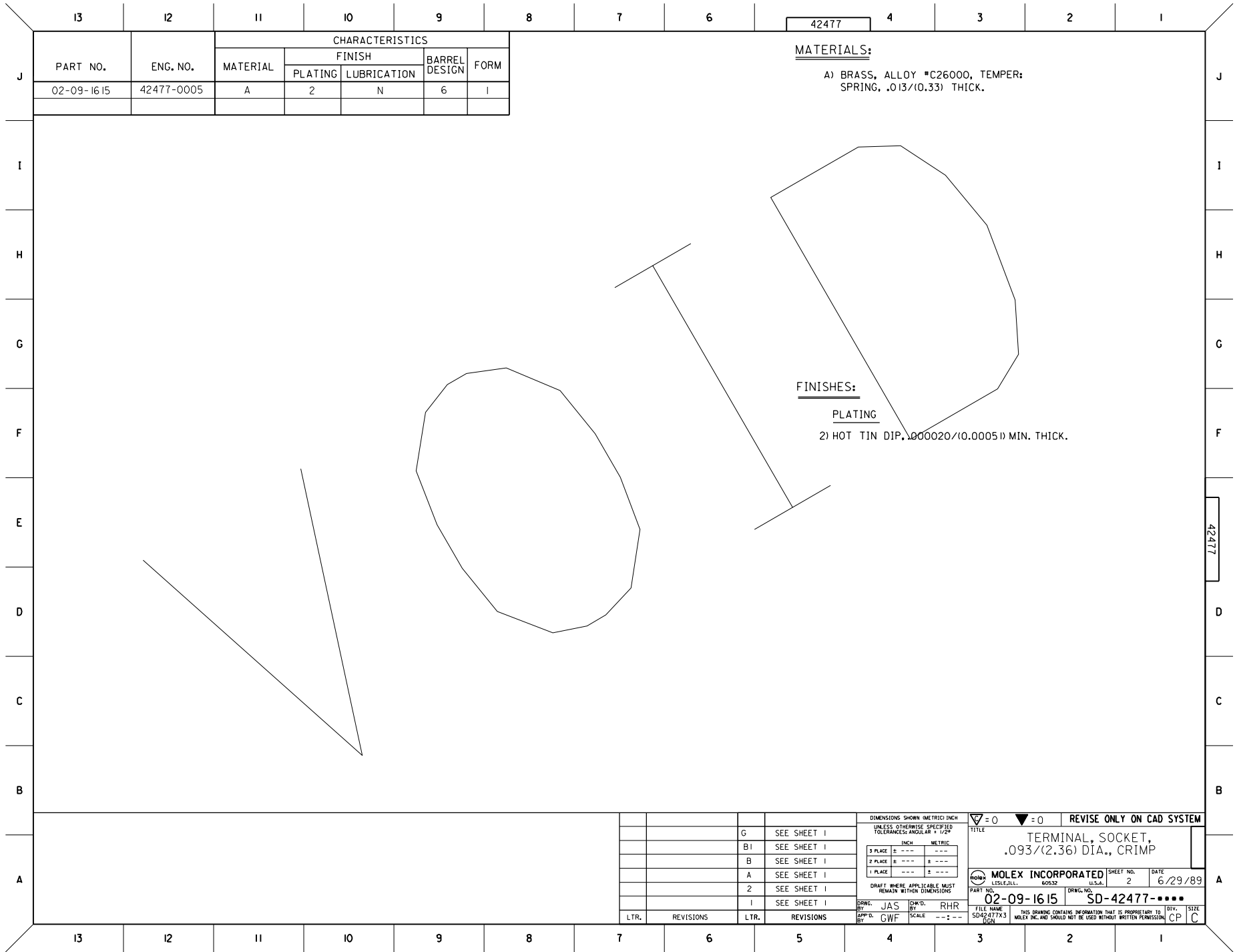
B1	FINAL REL. -0006 ECN #02 1167 8-12-92 RW
B	REVISED DRAWING PER ECN U11831 GEP 2-7-92 RHR
A	FINAL RELEASE ECR U1248 GEC 7/23/91

3	REVISED ECN# U10436 02-06-91 A.GUZIK
2	REVISED DRAWING PER ERO 29857 4-23-90 TRM

	2	G
	1	G
1	X-RELEASED ERO 28573 6-21-89 COMSTOCK	

0 0
TERMINAL, SOCKET,
.093/(2.36) DIA., CRIMP
FOR 14-18 AWG

.010 ---
.014 0.25
--- 0.35



42477

PART NO.	ENG. NO.	MATERIAL	CHARACTERISTICS			
			FINISH PLATING	LUBRICATION	BARREL DESIGN	FORM
02-09-1615	42477-0005	A	2	N	6	I

MATERIALS:

A) BRASS, ALLOY #C26000, TEMPER: SPRING, .013/(0.33) THICK.

FINISHES:

PLATING

2) HOT TIN DIP, .000020/(0.0005) MIN. THICK.

42477

DIMENSIONS SHOWN (METRIC) INCH		▽=0	▽=0	REVISE ONLY ON CAD SYSTEM																		
UNLESS OTHERWISE SPECIFIED TOLERANCES ANGULAR .01° ± .125°		TITLE																				
		TERMINAL, SOCKET, .093/(2.36) DIA., CRIMP																				
<table border="1"> <thead> <tr> <th></th> <th>INCH</th> <th>METRIC</th> </tr> </thead> <tbody> <tr> <td>3 PLACE</td> <td>± ---</td> <td>---</td> </tr> <tr> <td>2 PLACE</td> <td>± ---</td> <td>± ---</td> </tr> <tr> <td>1 PLACE</td> <td>---</td> <td>± ---</td> </tr> </tbody> </table>			INCH	METRIC	3 PLACE	± ---	---	2 PLACE	± ---	± ---	1 PLACE	---	± ---	<table border="1"> <tr> <td>MOLEX INCORPORATED</td> <td>SHEET NO. 2</td> <td>DATE 6/29/89</td> </tr> <tr> <td>LITTLE ROCK, AR 60532 U.S.A.</td> <td colspan="2"></td> </tr> </table>			MOLEX INCORPORATED	SHEET NO. 2	DATE 6/29/89	LITTLE ROCK, AR 60532 U.S.A.		
	INCH	METRIC																				
3 PLACE	± ---	---																				
2 PLACE	± ---	± ---																				
1 PLACE	---	± ---																				
MOLEX INCORPORATED	SHEET NO. 2	DATE 6/29/89																				
LITTLE ROCK, AR 60532 U.S.A.																						
DRAFT WHERE APPLICABLE MUST REMAIN WITHIN DIMENSIONS		PART NO. 02-09-1615 DRWG. NO. SD-42477-0005																				
<table border="1"> <tr> <td>DRWG. BY JAS</td> <td>CHK'D. BY RHR</td> </tr> <tr> <td>APP'D. BY GWF</td> <td>SCALE ---:---</td> </tr> </table>		DRWG. BY JAS	CHK'D. BY RHR	APP'D. BY GWF	SCALE ---:---	<table border="1"> <tr> <td>FILE NAME S042477X3</td> <td>THIS DRAWING CONTAINS INFORMATION THAT IS PROPRIETARY TO MOLEX INC. AND SHOULD NOT BE USED WITHOUT WRITTEN PERMISSION.</td> <td>DIV. CP</td> <td>SIZE C</td> </tr> </table>			FILE NAME S042477X3	THIS DRAWING CONTAINS INFORMATION THAT IS PROPRIETARY TO MOLEX INC. AND SHOULD NOT BE USED WITHOUT WRITTEN PERMISSION.	DIV. CP	SIZE C										
DRWG. BY JAS	CHK'D. BY RHR																					
APP'D. BY GWF	SCALE ---:---																					
FILE NAME S042477X3	THIS DRAWING CONTAINS INFORMATION THAT IS PROPRIETARY TO MOLEX INC. AND SHOULD NOT BE USED WITHOUT WRITTEN PERMISSION.	DIV. CP	SIZE C																			

LTR.	REVISIONS	LTR.	REVISIONS
G	SEE SHEET I		
B1	SEE SHEET I		
B	SEE SHEET I		
A	SEE SHEET I		
2	SEE SHEET I		
1	SEE SHEET I		