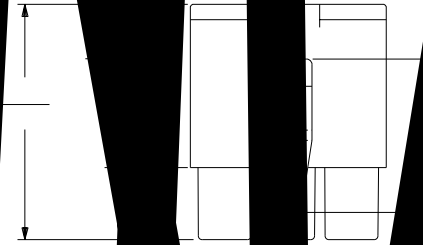
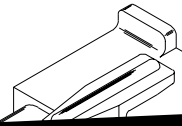


.30  
(7.6)



.170  
(4.32)



3	
F 2	

× 10

RECEIPT A  
276

PLUG		RECEPTACLE	
PART NO.	ENG. NO.	PART NO.	ENG. NO.
03-12-2036	42179-3PI	03-12-1036	42179-3RI
03-12-2035	42179-3P	50-29-1608	42179-3RI-B

LEGEND:

42179-3\*\*\*-\*

CIRCUIT SIZE: \_\_\_\_\_

HOUSING TYPE: \_\_\_\_\_

P = PLUG

R = RECEPTACLE

MOUNTING EAR OPTION: \_\_\_\_\_

BLANK = WITH PREBENT EARS AND RIBS, PLUG ONLY

I = WITHOUT EARS

COLOR: \_\_\_\_\_

BLANK = TRANSLUCENT NATURAL COLOR

AM=AMBER BK=BLACK BU=BLUE

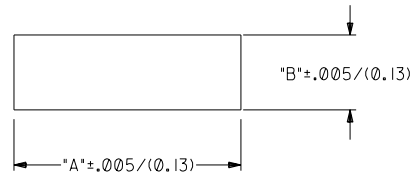
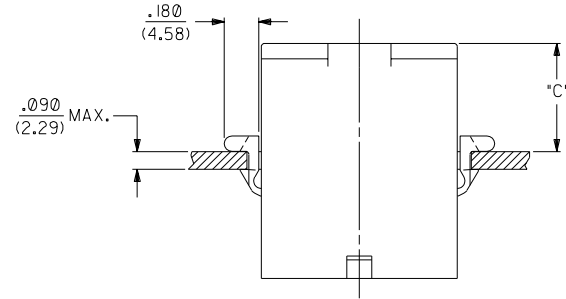
BN=BROWN GY=GRAY GN=GREEN

OR=ORANGE RD=RED YW=YELLOW

MATERIAL: \_\_\_\_\_

BLANK = MATERIAL CODE A.

B = MATERIAL CODE B.



RECOMMENDED HOLE CUTOUT

HOUSING	DIM. "A"	DIM. "B"	DIM. "C"
PLUG	1.181/(30.00)	.440/(11.18)	.57/(14.5)

NOTES:

- PART ACCEPTS A MAXIMUM .250/(6.35) INSULATION DIA.
- FOR USE WITH ALL MOLEX .125/(3.17) DIAMETER SERIES TERMINAL EXCEPT THE 1219/1220 SERIES.
- MATERIAL CODES:-  
A- NYLON 6/6, U.L. 94V-2.  
B- NYLON 6/6, U.L. 94V-0.

REV.	BY	DATE	REVISIONS
G	SEE SHEET I		
FI	SEE SHEET I		
F	SEE SHEET I		
D	SEE SHEET I		
B	SEE SHT. I		
A	SEE SHT. I		
GI	SEE SHEET I	I	SEE SHT. I
LTR.	REVISIONS	LTR.	REVISIONS

DIMENSIONS SHOWN (METRIC) INCH	
UNLESS OTHERWISE SPECIFIED TOLERANCES: ANGULAR ±.5°	
INCH	METRIC
3 PLACE ± .007	---
2 PLACE ± .010	± 0.18
1 PLACE ---	± 0.25

REVISIONS ONLY ON CAD SYSTEM

TITLE: .125/(3.17) HOUSINGS, PLUG AND RECEPTACLE, 3 CKT., .330/(8.38) CTRS.

MOLEX INCORPORATED U.S.A.

DATE: 4/20/88

SHEET NO.: 3

FILE NAME: S421793X3.DGN

THIS DRAWING CONTAINS INFORMATION THAT IS PROPRIETARY TO MOLEX INC. AND SHOULD NOT BE USED WITHOUT WRITTEN PERMISSION.

DRWG. NO.: SD-42179-3\*

CP C