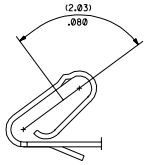
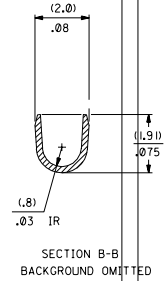
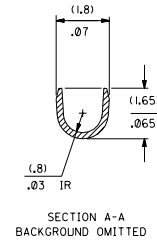
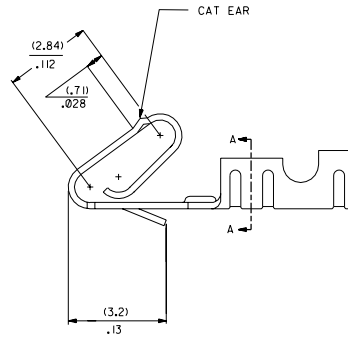
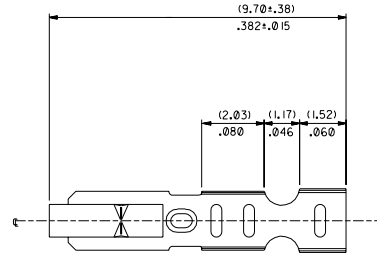
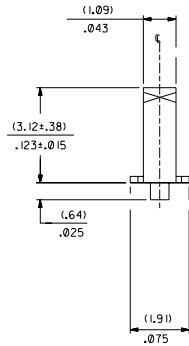
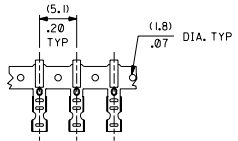


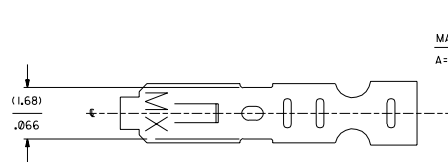
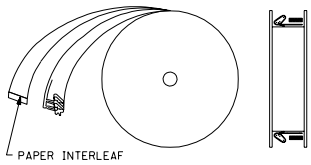
SELECT GOLD LOCATION



CARRIER VIEW



WINDING DETAIL B



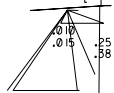
41572-*(***)*

MATERIAL L=LOOSE
A=SEE NOTE 5 BLANK=CHAIN PER DETAIL A

FORM
L=LOOSE
BLANK=CHAIN PER DETAIL A

PLATING
PER SDES-88
*(P909) OVERALL HOT TIN DIF: .00254 MICROMETERS MIN
(550) SELECT GOLD: .00038 MICROMETERS MIN.
OVERALL GOLD FLASH: .00005 MICROMETERS MIN.
OVERALL NICKEL UNDERPLATE: .00076 MICROMETERS MIN.
(555) SELECT GOLD: .00038 MIC

- NOTES:
1. CRIMP IS FOR 22-30 GA WIRE, WITH .062 DIA INSULATION MAX.
 2. INSERTION FORCE OF TERMINAL INTO .100 ± CONNECTOR IS 2.5 LBS. MAX
 3. TERMINALS MUST RETAIN 8 LBS PULL FOR 1 MIN. IN KK .100 ± HOUSING.
 4. PARTS CONFORM TO PS-10-07
 5. MATERIAL: .0080±.0004 THICK PHOS BRONZE ALLOY 510
 6. DIMENSIONS GIVEN ACROSS CENTERLINES ARE SYMMETRICAL ABOUT THOSE CENTERLINES WITHIN HALF THE TOTAL TOLERANCE.



541572X1