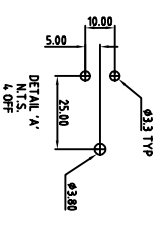
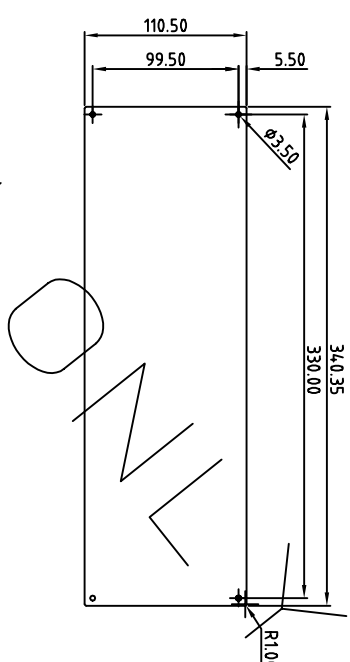
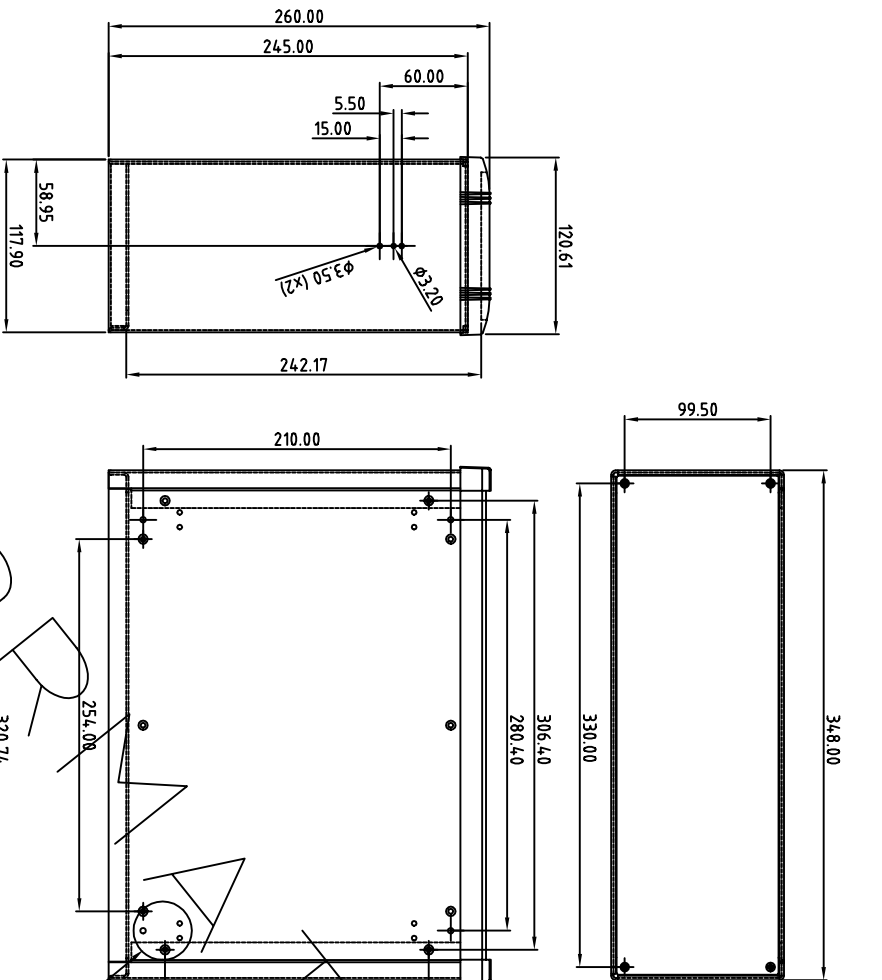


FIRST ANGLE PROJECTION

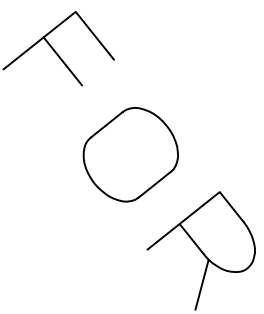


Note: Subject to technical modifications without prior notice.
 Typographical and other errors do not justify any claim for damages.
 All dimensions should be verified using the actual case.

Tolerances unless otherwise stated:

- General tolerances ± 0.20
- Resultant tolerances between hole centers ± 0.15
- Tolerances on hole diameters ± 0.05
- Angles $\pm 0.5^\circ$
- Surface finish $\sqrt{3.2}$

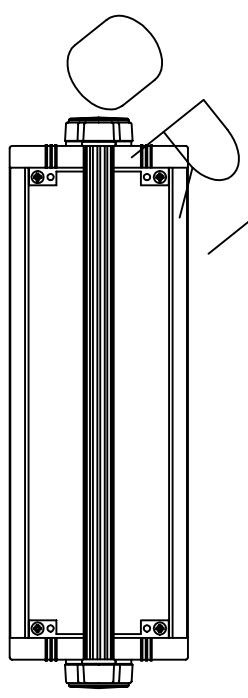
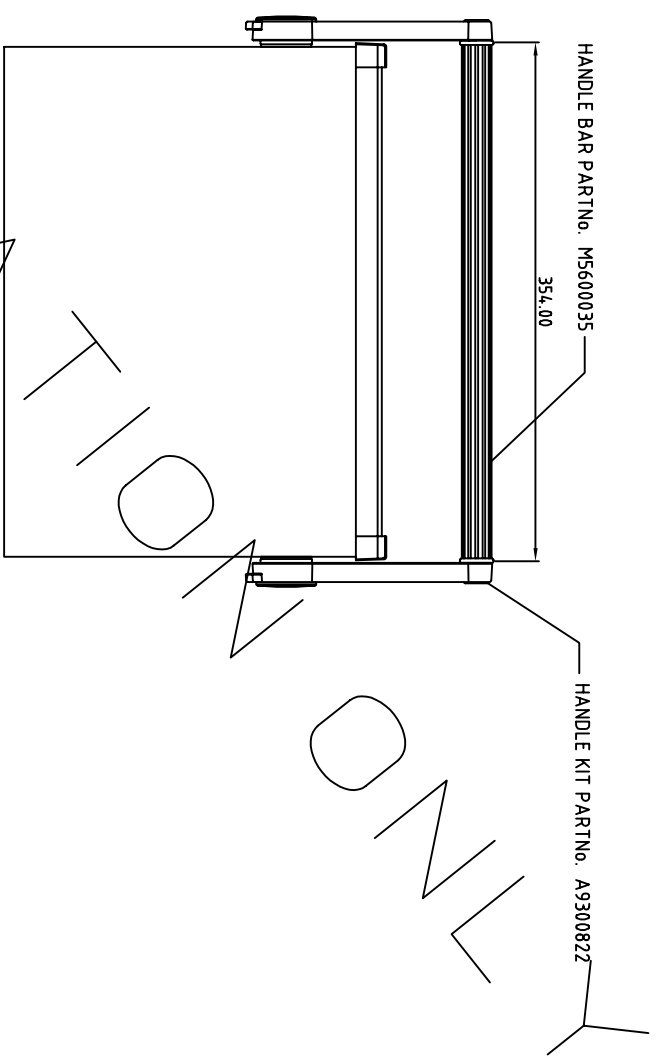
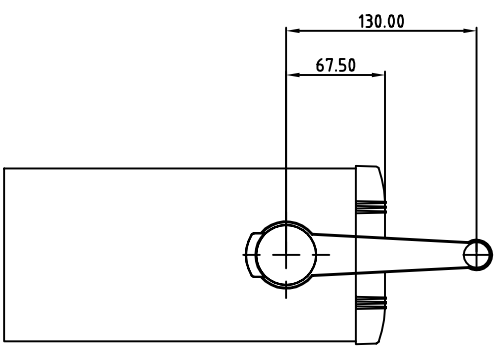
Required Finish	Scale	1:5	ALL DIMENSIONS IN MILLIMETRES	DO NOT SCALE
Drawn by:	Mark Jeffery	Checked by:		
Drawing Number	M5635215	Date drawn	19/04/01	Material Spec:
Part Name	Uninet Size 4, for Handle	Part Number	M5635215	Sheet 1 of 1
OKW OKW ENCLOSURES LTD Unit 6, Kingdon Close, Segensworth East Fareham, Hampshire, UK, PO15 5TJ		OKW ENCLOSURES LTD DATE AS SHOWN. THIS DRAWING CONTAINS PROPRIETARY INFORMATION OF OKW ENCLOSURES LTD AND IS TENDERED SUBJECT TO THE FOLLOWING CONDITIONS: THE INFORMATION IS RETAINED IN CONFIDENCE, NOT BE REPRODUCED OR COPIED, AND NOT BE USED OR INCORPORATED IN ANY PRODUCT, UNLESS PERMISSION IS OBTAINED IN WRITING FROM OKW ENCLOSURES LTD.		
				A4



LOW

LOW

FIRST ANGLE PROJECTION



Note: Subject to technical modifications without prior notice.
Typographical and other errors do not justify any claim for damages.
All dimensions should be verified using the actual case.

Tolerances unless otherwise stated:

- General tolerances ± 0.20
- Resultant tolerances between hole centers ± 0.15
- Tolerances on hole diameters ± 0.05
- Angles $\pm 0.5^\circ$
- Surface finish $3.2 \sqrt{\text{ }}$

Required Finish	Scale	ALL DIMENSIONS IN MILLIMETRES			DO NOT SCALE
	1:5	Drawn by:	Checked by:	Drawing Number	Material Spec.
		Mark Jeffery		Size/Handle/assy	
Part Name		Uninet Size 4, With Handle			
Part Number					
OKW ENCLOSURES LTD		Unit 6, Kingdom Close, Segensworth East			
Farham, Hampshire, UK, PO15 5TJ					
Sheet 1 of 1					
A4					

OKW ENCLOSURES LTD DATE AS SHOWN THIS DRAWING CONTAINS PROPRIETARY INFORMATION OF OKW ENCLOSURES LTD AND IS TENDERED SUBJECT TO THE FOLLOWING CONDITIONS: THE INFORMATION BE RETAINED IN CONFIDENCE, NOT BE REPRODUCED OR COPIED, AND NOT BE USED OR INCORPORATED IN ANY PRODUCT, UNLESS PERMISSION IS OBTAINED IN WRITING FROM OKW ENCLOSURES LTD.

FOR

IN

FOR

FOR

FOR