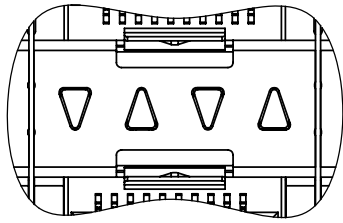
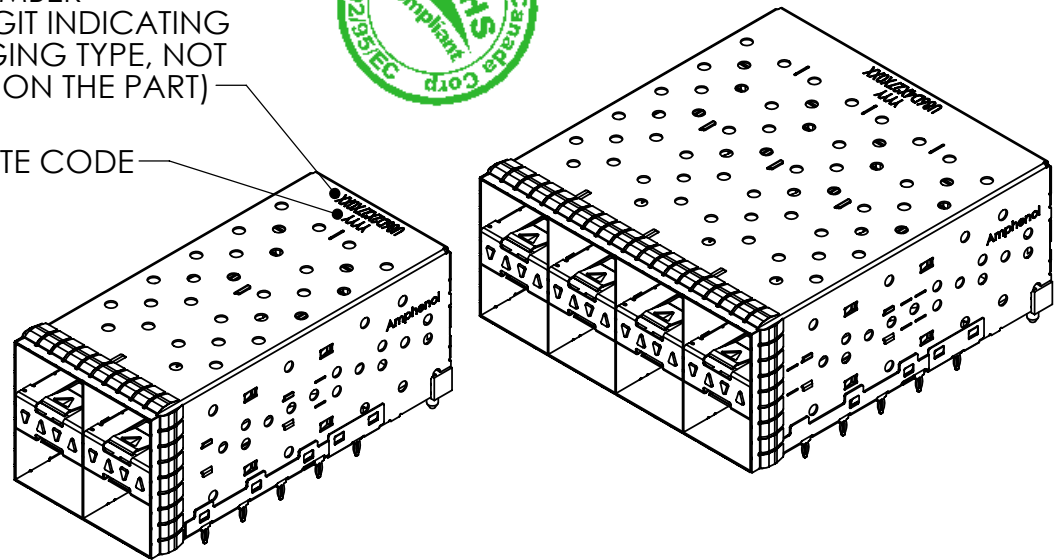


REVISIONS			
REV	DESCRIPTION	DATE	APPRD
D	PROPOSAL	FEB24/09	
E	PART NUMBER SYSTEM UPDATED	AUG27/09	
F	ADD 2X1 AND 2X8	SEP01/10	

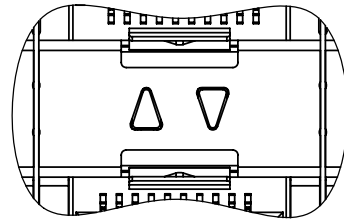


PART NUMBER
(LAST DIGIT INDICATING
PACKAGING TYPE, NOT
PRINTED ON THE PART)

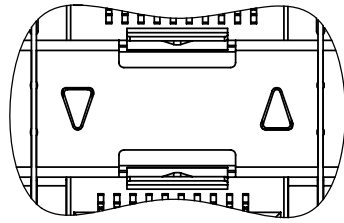
DATE CODE



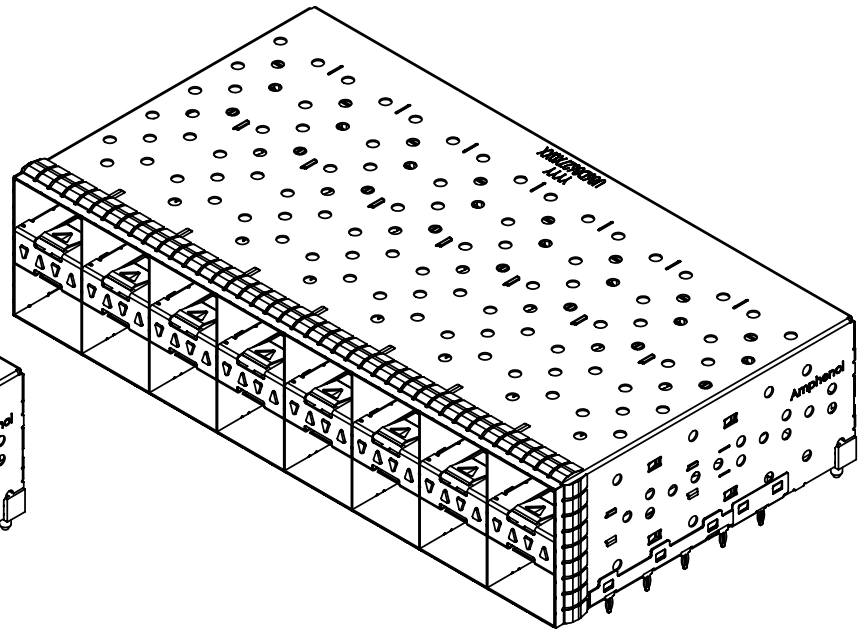
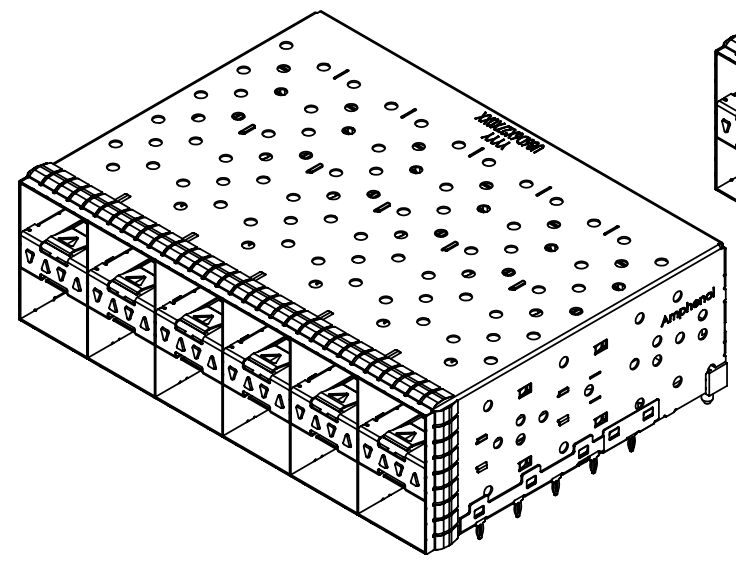
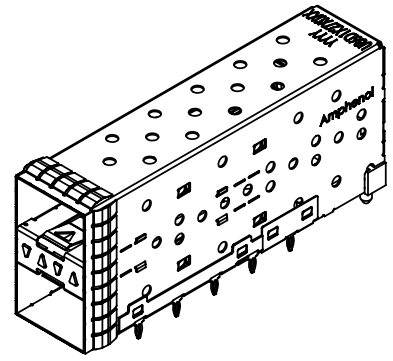
U86-DX627-10XX1
4 LIGHT PIPES PER 2X1



U86-DX627-20XX1
2 INNER LIGHT PIPES
PER 2X1



U86-DX627-30XX1
2 OUTER LIGHT PIPES
PER 2X1



MATERIAL: (RoHS COMPLIANT)

CAGE - PRESS FIT:
COPPER ALLOY

PLATING:
SEE AMPHENOL PART NUMBER
CONFIGURATION FOR OPTIONS.

CONNECTOR - PRESS FIT:

PLASTIC HOUSING:
LCP, FLAMMABILITY RATING UL94-0.

CONTACTS:
PHOSPHOR BRONZE
PLATING OPTION: NICKEL 2.54 µm MIN.

LIGHT PIPE:
CLEAR POLYCARBONATE, FLAMMABILITY
RATING UL94-0.

PACKAGING:
TRAY PACKAGING.

TEMPERATURE RANGE:
-40°C TO +85°C

AMPHENOL PART NUMBER CONFIGURATION

U86 - D X 6 2 7 - X 0 X X 1

NUMBER OF PORTS

- 1 = 2X1
- 2 = 2X2
- 4 = 2X4
- 6 = 2X6
- 8 = 2X8

LIGHT PIPE CONFIGURATION

- 1 = 4 LIGHT PIPES PER 2X1
- 2 = 2 INNER LIGHT PIPES PER 2X1
- 3 = 2 OUTER LIGHT PIPES PER 2X1

PACKAGING

- 1 = TRAY

CAGE PLATING

- 2 = NICKEL

PRESS FIT CONNECTOR PLATING

- 1 = 0.76 µm MIN. GOLD ON MATING AREA
3.81-7.62 µm TIN/LEAD ON TERMINATION
- 4 = 0.38 µm MIN. GOLD ON MATING AREA
3.81-7.62 µm TIN/LEAD ON TERMINATION

DO NOT SCALE DRAWING

THIS DOCUMENT CONTAINS PROPRIETARY INFORMATION AND SUCH INFORMATION MAY NOT BE DISCLOSED TO OTHERS FOR ANY PURPOSE OR USED FOR MANUFACTURING PURPOSES WITHOUT PERMISSION FROM AMPHENOL CANADA CORP.

UNLESS OTHERWISE SPECIFIED DIMENSIONS ARE IN MILLIMETERS TOLERANCES ARE:

DECIMALS	ANGLES
X.X ± 0.25	± 1°
X.XX ± 0.15	

MATERIAL AND FINISH: N/A

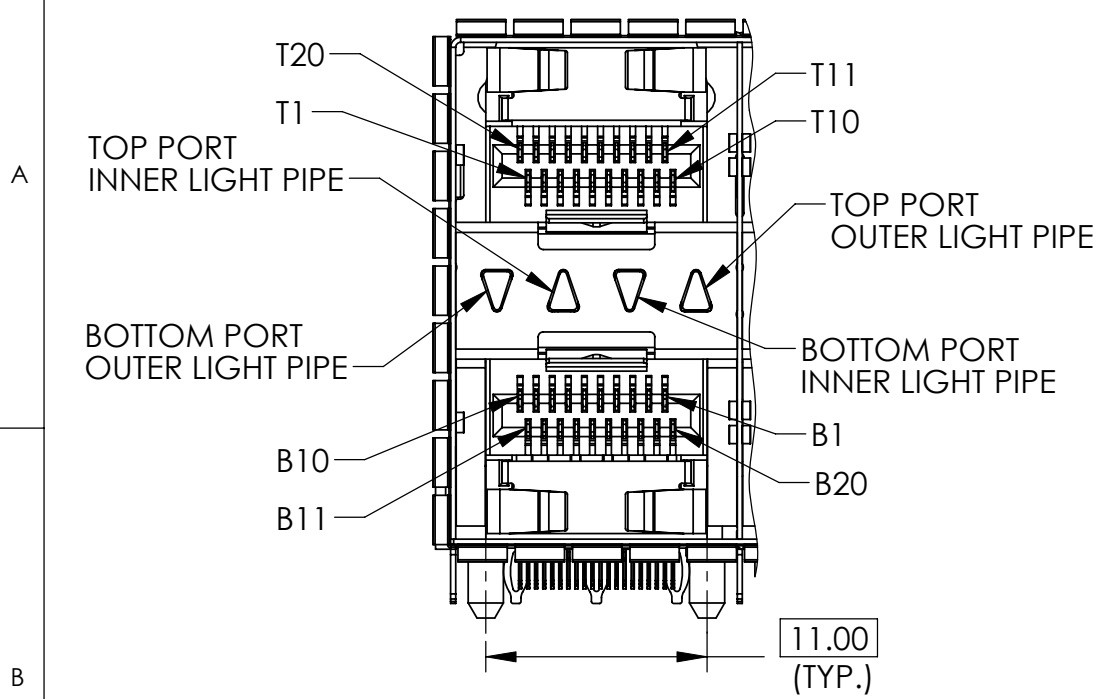
REF. X

CODE IDENT. NO. 03554

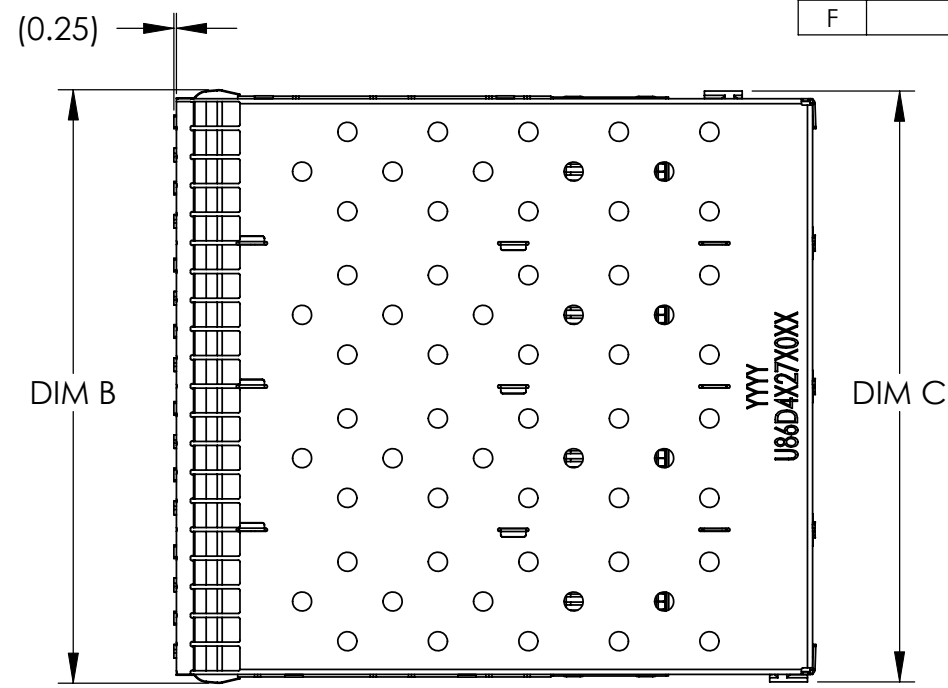
APPROVALS	DATE
DRAWN B.PHAM	SEP01/10
DESIGNED J.SI	FEB23/09
CHECKED X	X
QA APPD X	X
IE APP'D X	X
DWG APP'D	

Amphenol Canada Corp.	
TITLE 2XN SFP+ EXPRESSPORT™ COMBO WITH LIGHT PIPE (SPRING FINGER GASKET)	
SIZE A4	DWG. NO. P-U86-DX627-X0XX1
SCALE 2:3	REV. F
PROJECT	SHEET 1 OF 8

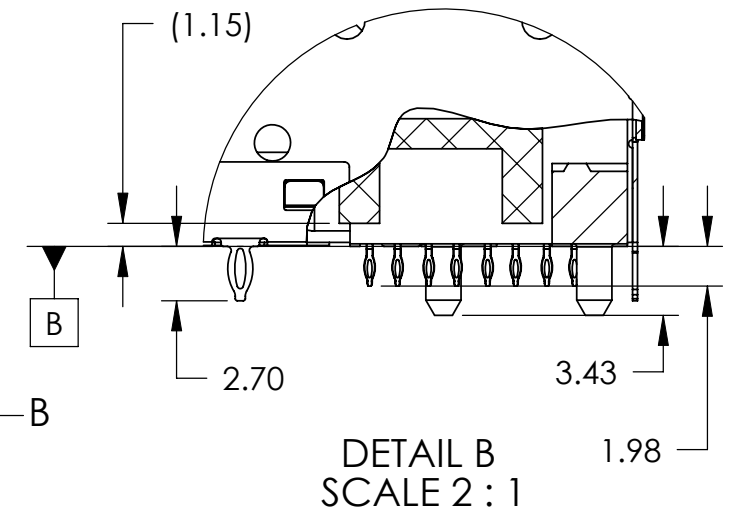
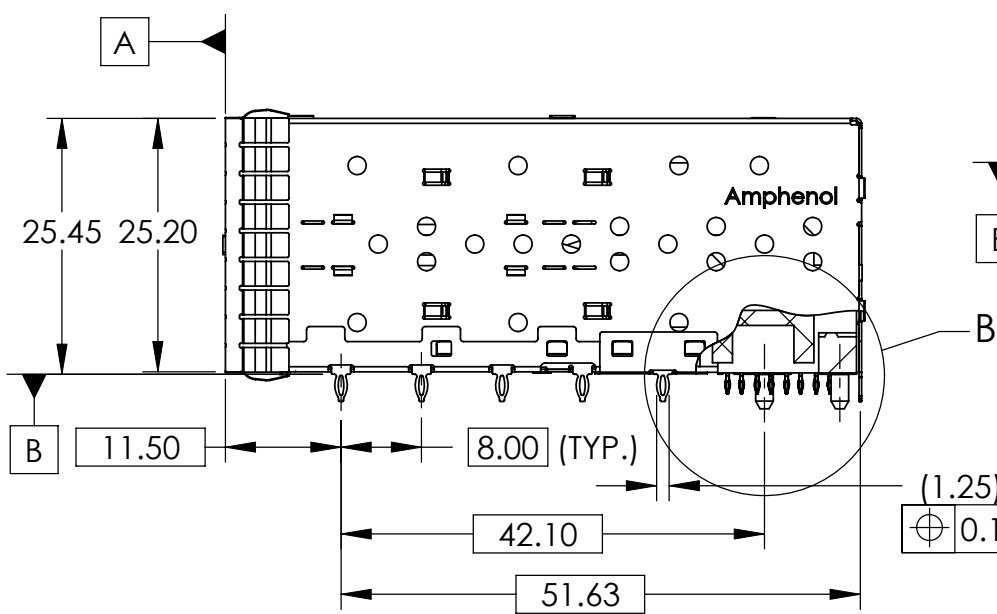
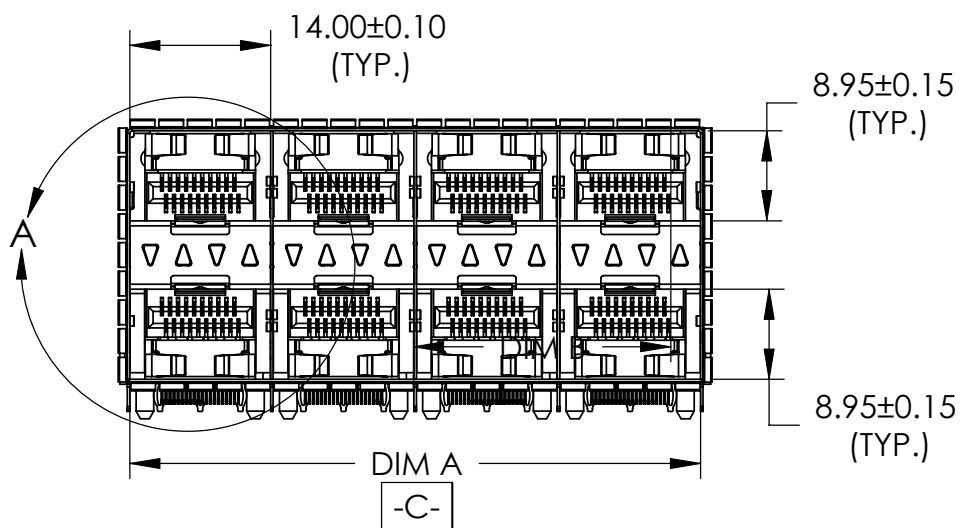
REVISIONS			
REV	DESCRIPTION	DATE	APPRD
D	PROPOSAL	FEB24/09	
E	PART NUMBER SYSTEM UPDATED	AUG27/09	
F	ADD 2X1 AND 2X8	SEP01/10	



DETAIL A
SCALE 2:1



SFP COMBO	DIM A	DIM B	DIM C
2X1 SFP	14.00	16.25	16.00
2X2 SFP	28.25	30.50	30.25
2X4 SFP	56.75	59.00	58.75
2X6 SFP	85.25	87.50	87.25
2X8 SFP	113.75	116.00	115.75



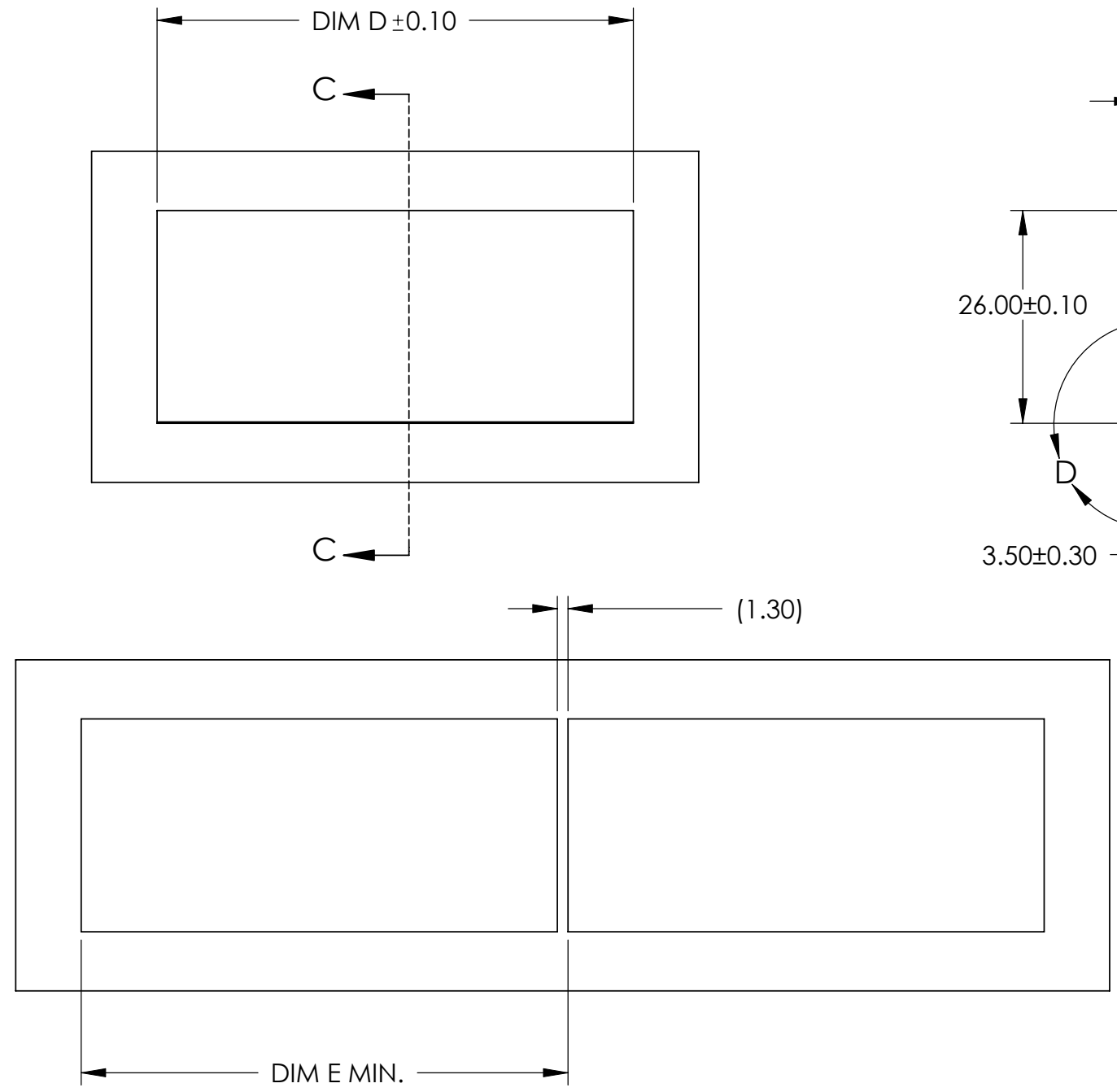
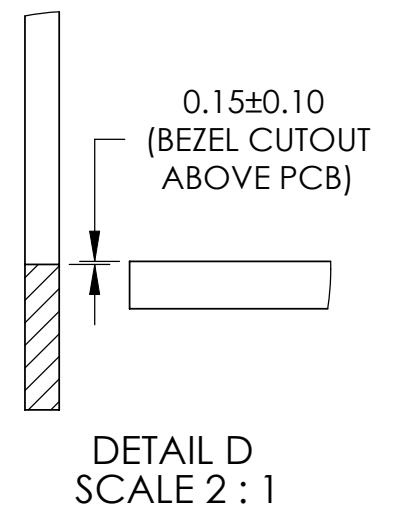
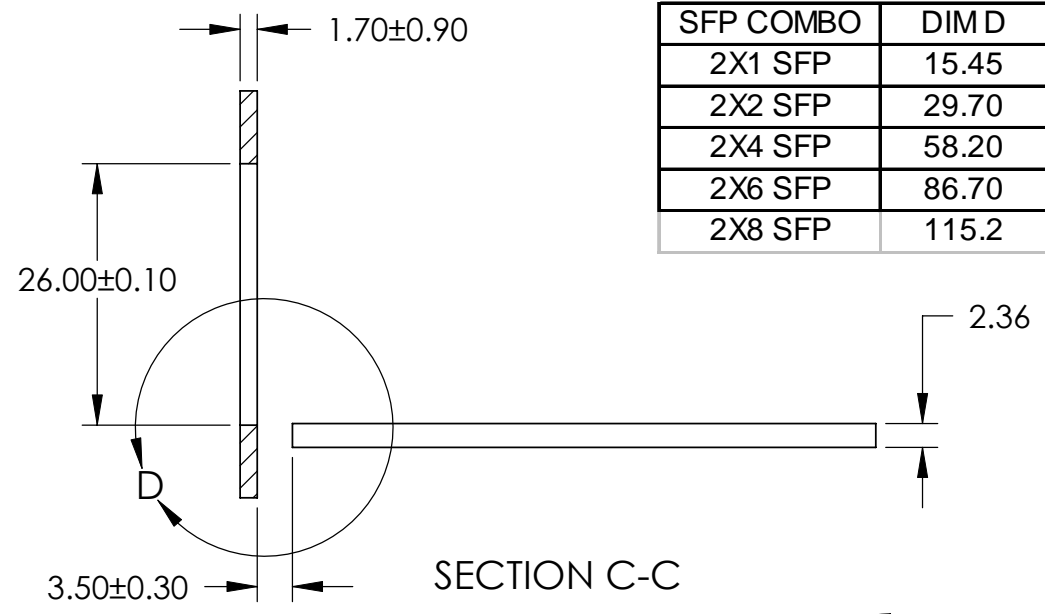
DO NOT SCALE DRAWING

THIS DOCUMENT CONTAINS PROPRIETARY INFORMATION AND SUCH INFORMATION MAY NOT BE DISCLOSED TO OTHERS FOR ANY PURPOSE OR USED FOR MANUFACTURING PURPOSES WITHOUT PERMISSION FROM AMPHENOL CANADA CORP.

UNLESS OTHERWISE SPECIFIED DIMENSIONS ARE IN MILLIMETERS TOLERANCES ARE: DECIMALS ANGLES X.X ± 0.25 ± 1° X.XX ± 0.15	APPROVALS	DATE	Amphenol Canada Corp. TITLE 2XN SFP+ EXPRESSPORT™ COMBO WITH LIGHT PIPE (SPRING FINGER GASKET) SIZE A4 DWG. NO. P-U86-DX627-X0XX1 REV. F SCALE 1:1 PROJECT SHEET 2 OF 8
	DRAWN B.PHAM	SEP01/10	
	DESIGNED J.SI	FEB23/09	
	CHECKED X	X	
	QA APPD X	X	
MATERIAL AND FINISH N/A	IE APP'D X	X	
REF. X	DWG APP'D		
CODE IDENT. NO. 03554			

REVISIONS			
REV	DESCRIPTION	DATE	APPRD
D	PROPOSAL	FEB24/09	
E	PART NUMBER SYSTEM UPDATED	AUG27/09	
F	ADD 2X1 AND 2X8	SEP01/10	

SFP COMBO	DIM D	DIM E
2X1 SFP	15.45	16.75
2X2 SFP	29.70	31.00
2X4 SFP	58.20	59.50
2X6 SFP	86.70	88.00
2X8 SFP	115.2	116.5

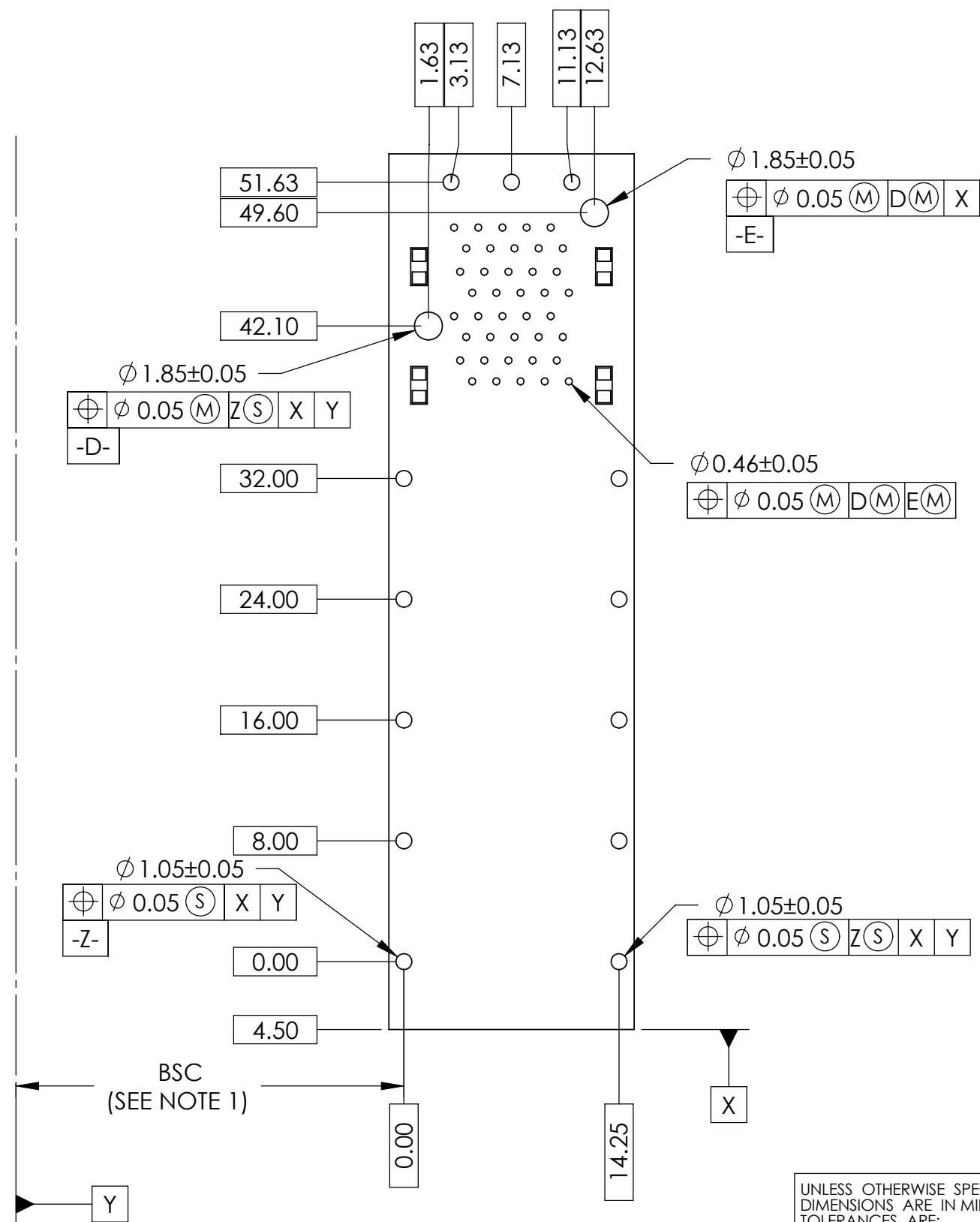


UNLESS OTHERWISE SPECIFIED DIMENSIONS ARE IN MILLIMETERS TOLERANCES ARE: DECIMALS ANGLES X.X ± 0.25 ± 1° X.XX ± 0.15	APPROVALS		DATE		Amphenol Canada Corp.	
	DRAWN	B.PHAM	SEP01/10			
	DESIGNED	J.SI	FEB23/09		2XN SFP+ EXPRESSPORT™ COMBO WITH LIGHT PIPE (SPRING FINGER GASKET)	
	CHECKED	X	X		SIZE	A4
	QA APPD	X	X		DWG. NO.	P-U86-DX627-X0XX1
MATERIAL AND FINISH	N/A				REV.	F
REF.	X				SCALE	1:1
CODE IDENT. NO.	03554		DWG APP'D		PROJECT	
					SHEET	3 OF 8

DO NOT SCALE DRAWING

THIS DOCUMENT CONTAINS PROPRIETARY INFORMATION AND SUCH INFORMATION MAY NOT BE DISCLOSED TO OTHERS FOR ANY PURPOSE OR USED FOR MANUFACTURING PURPOSES WITHOUT PERMISSION FROM AMPHENOL CANADA CORP.

REVISIONS			
REV	DESCRIPTION	DATE	APPRD
D	PROPOSAL	FEB24/09	
E	PART NUMBER SYSTEM UPDATED	AUG27/09	
F	ADD 2X1 AND 2X8	SEP01/10	



- NOTES:
- DATUM AND BASIC DIMENSIONS ESTABLISHED BY CUSTOMER.
 - 1.05 mm DIAMETER HOLES ARE CHASSIS GROUND (13 HOLES).

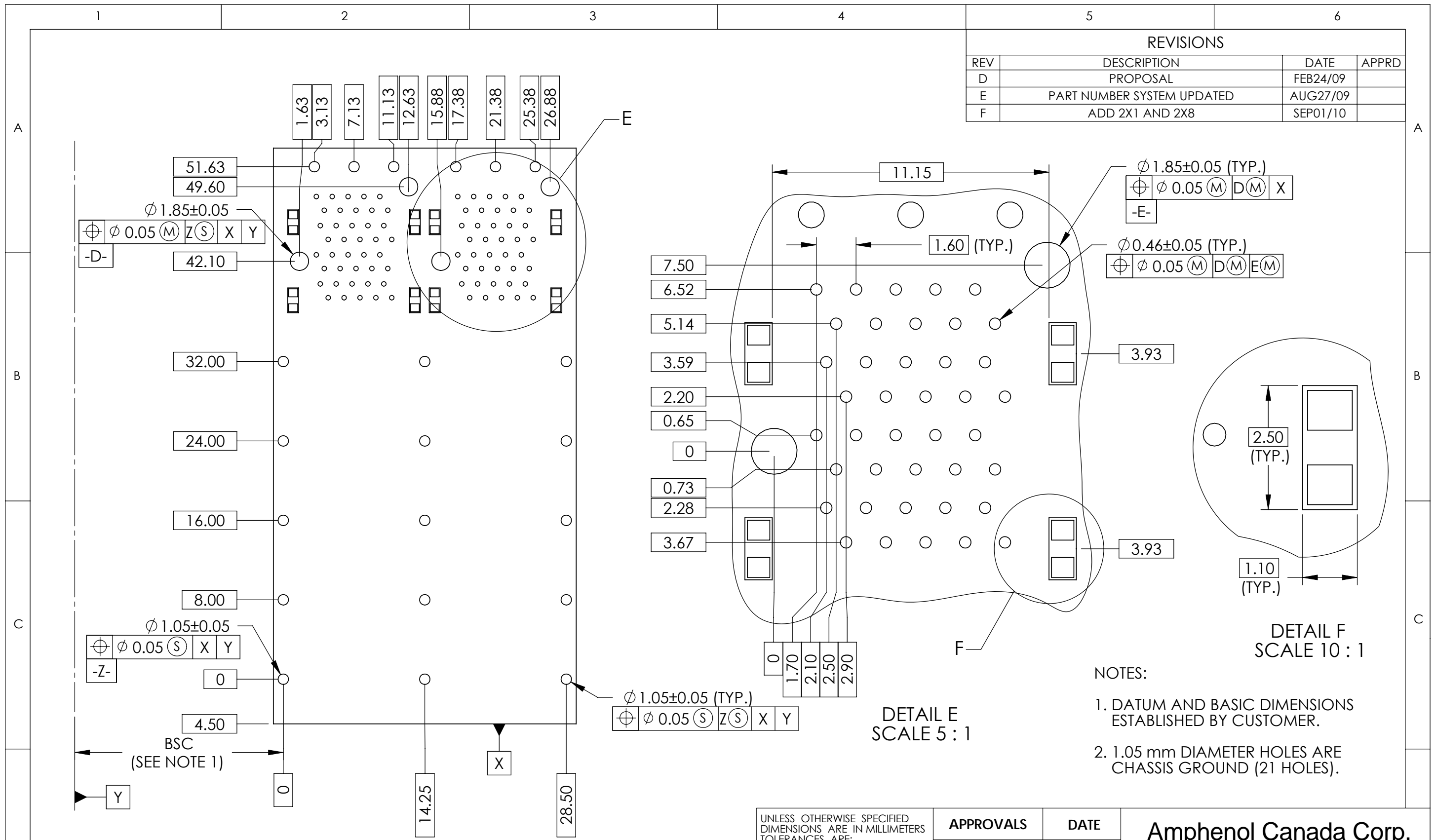
2X1 PCB LAYOUT

DO NOT SCALE DRAWING

THIS DOCUMENT CONTAINS PROPRIETARY INFORMATION AND SUCH INFORMATION MAY NOT BE DISCLOSED TO OTHERS FOR ANY PURPOSE OR USED FOR MANUFACTURING PURPOSES WITHOUT PERMISSION FROM AMPHENOL CANADA CORP.

UNLESS OTHERWISE SPECIFIED DIMENSIONS ARE IN MILLIMETERS TOLERANCES ARE: DECIMALS ANGLES X.X ± 0.25 ± 1° X.XX ± 0.15 MATERIAL AND FINISH N/A REF. X CODE IDENT. NO. 03554	APPROVALS	DATE	Amphenol Canada Corp.	
	DRAWN B.PHAM	SEP01/10		
	DESIGNED J.SI	FEB23/09	TITLE 2XN SFP+ EXPRESSPORT™ COMBO WITH LIGHT PIPE (SPRING FINGER GASKET)	
	CHECKED X	X		
	QA APPD X	X		
IE APP'D X	X	SIZE A4	DWG. NO. P-U86-DX627-X0XX1	REV. F
DWG APP'D		SCALE 2:1	PROJECT	SHEET 4 OF 8

REVISIONS			
REV	DESCRIPTION	DATE	APPRD
D	PROPOSAL	FEB24/09	
E	PART NUMBER SYSTEM UPDATED	AUG27/09	
F	ADD 2X1 AND 2X8	SEP01/10	



2X2 PCB LAYOUT

DO NOT SCALE DRAWING

THIS DOCUMENT CONTAINS PROPRIETARY INFORMATION AND SUCH INFORMATION MAY NOT BE DISCLOSED TO OTHERS FOR ANY PURPOSE OR USED FOR MANUFACTURING PURPOSES WITHOUT PERMISSION FROM AMPHENOL CANADA CORP.

**DETAIL E
SCALE 5 : 1**

**DETAIL F
SCALE 10 : 1**

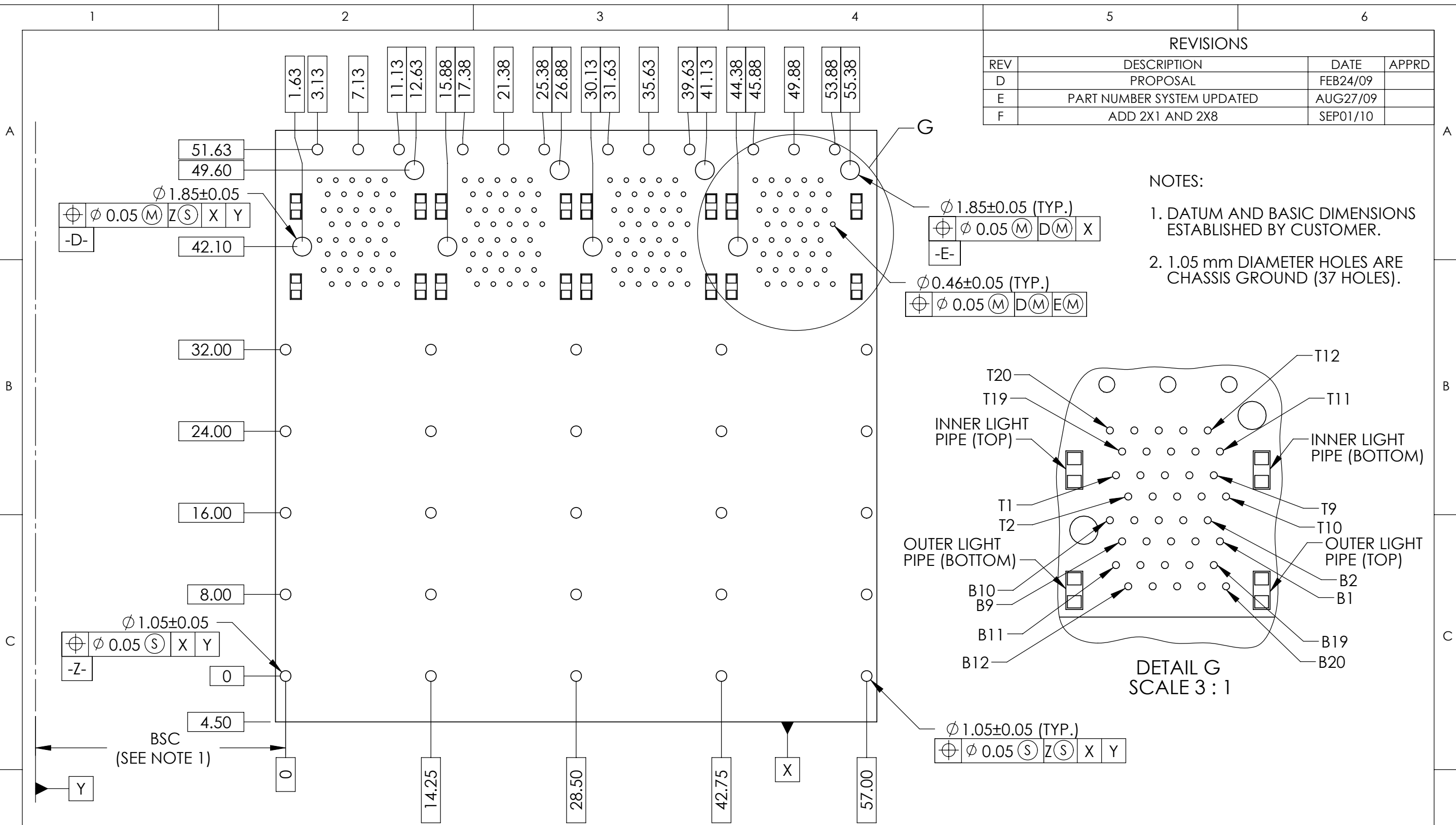
NOTES:

1. DATUM AND BASIC DIMENSIONS ESTABLISHED BY CUSTOMER.
2. 1.05 mm DIAMETER HOLES ARE CHASSIS GROUND (21 HOLES).

UNLESS OTHERWISE SPECIFIED DIMENSIONS ARE IN MILLIMETERS TOLERANCES ARE: DECIMALS ANGLES X.X ± 0.25 ± 1° X.XX ± 0.15 MATERIAL AND FINISH N/A REF. X CODE IDENT. NO. 03554	APPROVALS	DATE	Amphenol Canada Corp.	
	DRAWN B.PHAM	SEP01/10		
	DESIGNED J.SI	FEB23/09	TITLE	2XN SFP+ EXPRESSPORT™ COMBO WITH LIGHT PIPE (SPRING FINGER GASKET)
	CHECKED X	X	SIZE A4	DWG. NO. P-U86-DX627-X0XX1
	QA APPD X	X	SCALE 2:1	PROJECT SHEET 5 OF 8
	IE APP'D X	X	REV. F	

REVISIONS			
REV	DESCRIPTION	DATE	APPRD
D	PROPOSAL	FEB24/09	
E	PART NUMBER SYSTEM UPDATED	AUG27/09	
F	ADD 2X1 AND 2X8	SEP01/10	

- NOTES:
- DATUM AND BASIC DIMENSIONS ESTABLISHED BY CUSTOMER.
 - 1.05 mm DIAMETER HOLES ARE CHASSIS GROUND (37 HOLES).



2X4 PCB LAYOUT

DO NOT SCALE DRAWING

THIS DOCUMENT CONTAINS PROPRIETARY INFORMATION AND SUCH INFORMATION MAY NOT BE DISCLOSED TO OTHERS FOR ANY PURPOSE OR USED FOR MANUFACTURING PURPOSES WITHOUT PERMISSION FROM AMPHENOL CANADA CORP.

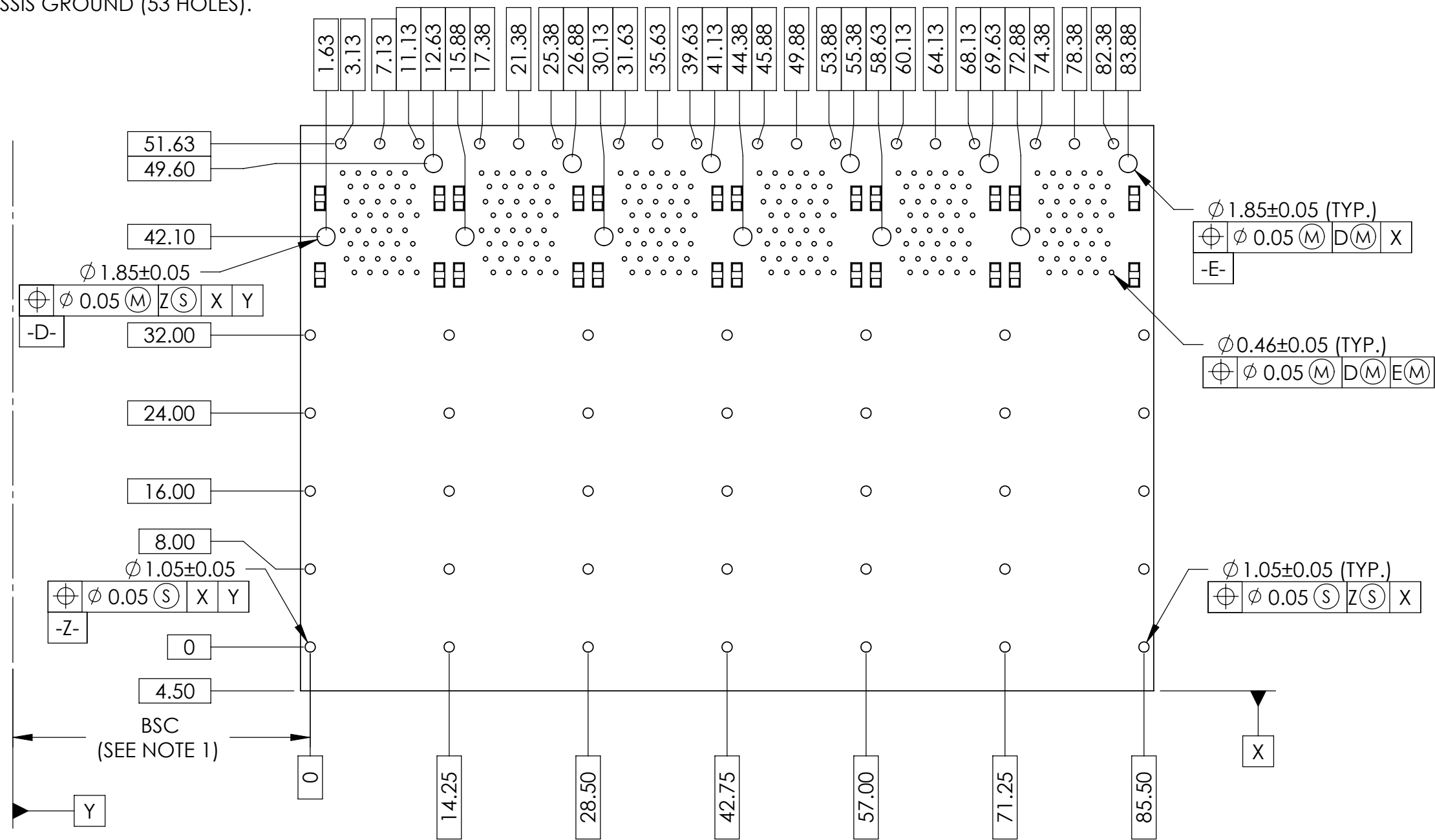
UNLESS OTHERWISE SPECIFIED DIMENSIONS ARE IN MILLIMETERS TOLERANCES ARE: DECIMALS ANGLES X.X ± 0.25 ± 1° X.XX ± 0.15	APPROVALS	DATE	Amphenol Canada Corp. TITLE 2XN SFP+ EXPRESSPORT™ COMBO WITH LIGHT PIPE (SPRING FINGER GASKET)
	DRAWN B.PHAM	SEP01/10	
	DESIGNED J.SI	FEB23/09	
	CHECKED X	X	
MATERIAL AND FINISH N/A	QA APPD X	X	SIZE A4 DWG. NO. P-U86-DX627-X0XX1 REV. F
REF. X	IE APP'D X	X	
CODE IDENT. NO. 03554	DWG APP'D		
		SCALE 2:1	SHEET 6 OF 8

NOTES:

1. DATUM AND BASIC DIMENSIONS ESTABLISHED BY CUSTOMER.

2. 1.05 mm DIAMETER HOLES ARE CHASSIS GROUND (53 HOLES).

REVISIONS			
REV	DESCRIPTION	DATE	APPRD
D	PROPOSAL	FEB24/09	
E	PART NUMBER SYSTEM UPDATED	AUG27/09	
F	ADD 2X1 AND 2X8	SEP01/10	



2X6 PCB LAYOUT

DO NOT SCALE DRAWING

THIS DOCUMENT CONTAINS PROPRIETARY INFORMATION AND SUCH INFORMATION MAY NOT BE DISCLOSED TO OTHERS FOR ANY PURPOSE OR USED FOR MANUFACTURING PURPOSES WITHOUT PERMISSION FROM AMPHENOL CANADA CORP.

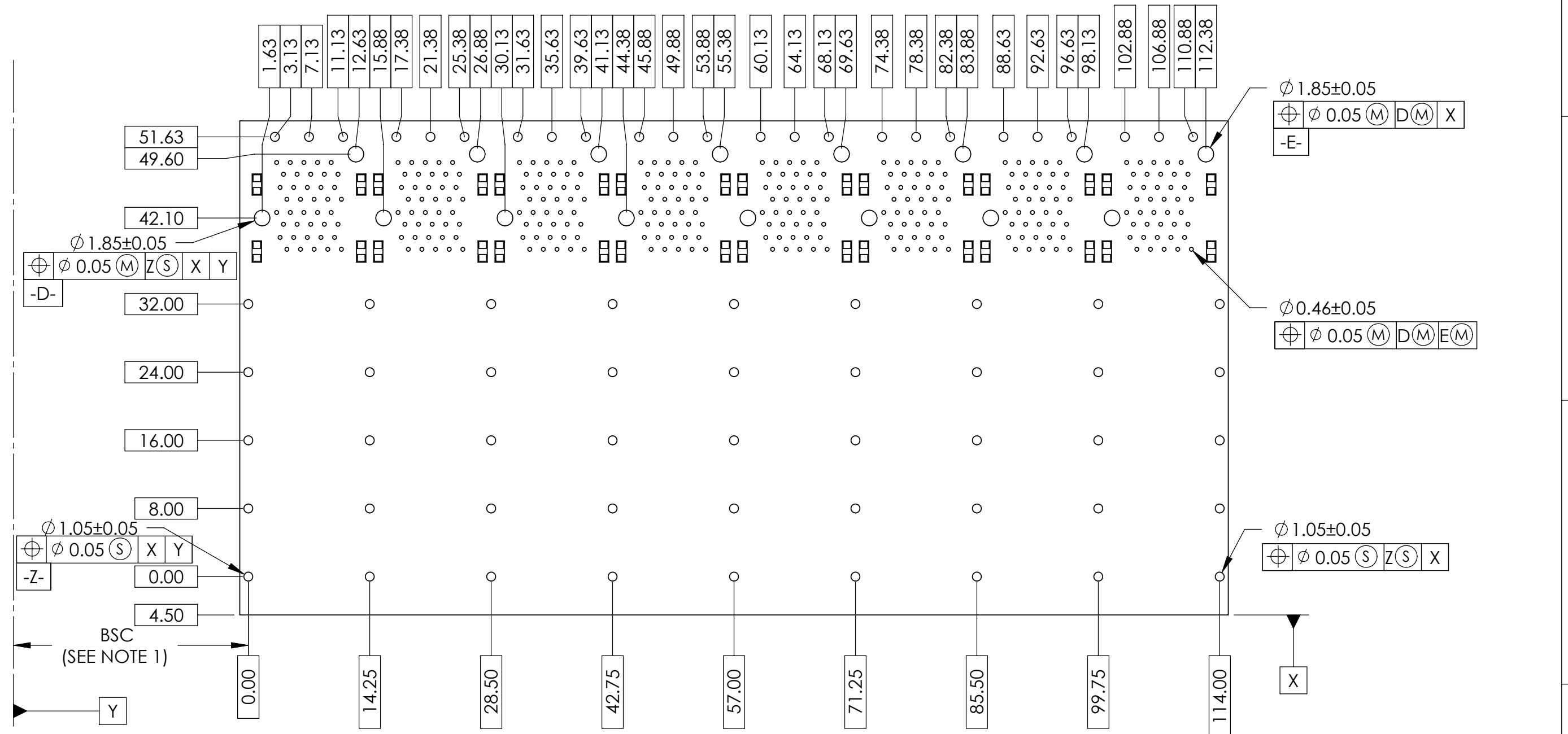
UNLESS OTHERWISE SPECIFIED DIMENSIONS ARE IN MILLIMETERS TOLERANCES ARE:		APPROVALS		DATE		Amphenol Canada Corp.	
DECIMALS X.X ± 0.25		DRAWN B.PHAM		SEP01/10		TITLE	
ANGLES ± 1°		DESIGNED J.SI		FEB23/09		2XN SFP+ EXPRESSPORT™ COMBO WITH LIGHT PIPE (SPRING FINGER GASKET)	
MATERIAL AND FINISH N/A		CHECKED X		X		SIZE A4 DWG. NO. P-U86-DX627-X0XX1 REV. F	
REF. X		QA APPD X		X		SCALE 3:2 PROJECT SHEET 7 OF 8	
CODE IDENT. NO. 03554		IE APP'D X		X			
		DWG APP'D					

NOTES:

- DATUM AND BASIC DIMENSIONS ESTABLISHED BY CUSTOMER.
- 1.05 mm DIAMETER HOLES ARE CHASSIS GROUND (69 HOLES).

REVISIONS

REV	DESCRIPTION	DATE	APPRD
D	PROPOSAL	FEB24/09	
E	PART NUMBER SYSTEM UPDATED	AUG27/09	
F	ADD 2X1 AND 2X8	SEP01/10	



2X8 PCB LAYOUT

DO NOT SCALE DRAWING

THIS DOCUMENT CONTAINS PROPRIETARY INFORMATION AND SUCH INFORMATION MAY NOT BE DISCLOSED TO OTHERS FOR ANY PURPOSE OR USED FOR MANUFACTURING PURPOSES WITHOUT PERMISSION FROM AMPHENOL CANADA CORP.

UNLESS OTHERWISE SPECIFIED DIMENSIONS ARE IN MILLIMETERS TOLERANCES ARE: DECIMALS ANGLES X.X ± 0.25 ± 1° X.XX ± 0.15	APPROVALS	DATE	Amphenol Canada Corp.	
	DRAWN B.PHAM	SEP01/10		
MATERIAL AND FINISH N/A	DESIGNED J.SI	FEB23/09	TITLE 2XN SFP+ EXPRESSPORT™ COMBO WITH LIGHT PIPE (SPRING FINGER GASKET)	
	CHECKED X	X	SIZE A4	DWG. NO. P-U86-DX627-X0XX1
REF. X	QA APPD X	X	SCALE 3:2	PROJECT
CODE IDENT. NO. 03554	IE APP'D X	X	SHEET 8 OF 8	REV. F