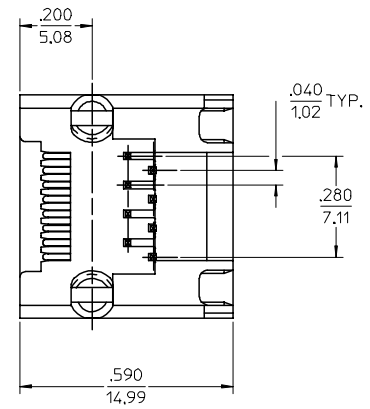
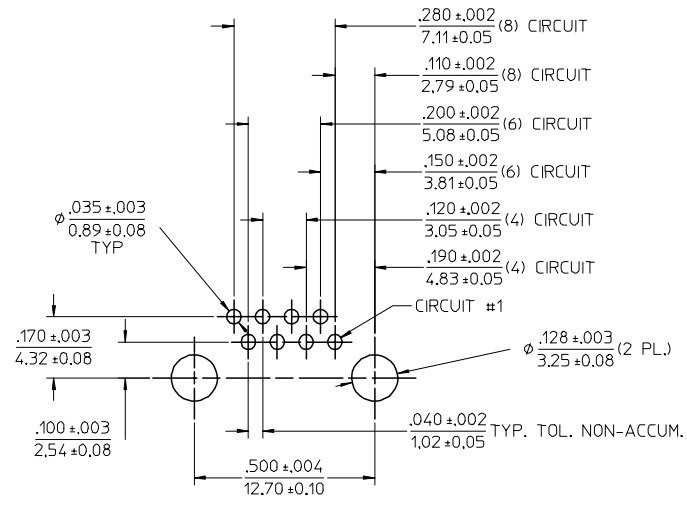
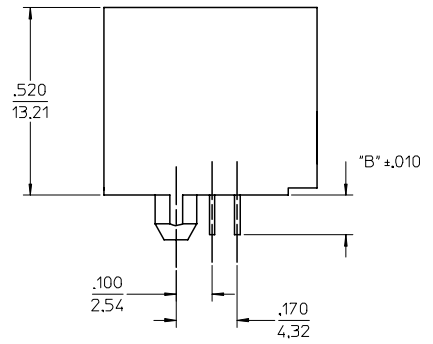
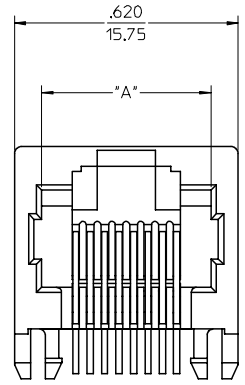


NOTES:

- 1) MATERIAL:
HOUSING: NYLON(PA), GLASS FILLED, UL94V-0, COLOR: SEE CHART
TERMINALS: PHOSPHOR BRONZE, .015/(0,38) THICK
- 2) FINISH:
TERMINALS:
SELECT GOLD IN CONTACT AREA: 50 MICRONS MIN.,
*SELECT TIN IN PC TAIL AREA: 100 MICRONS MIN.,
WITH OVERALL NICKEL UNDERPLATE: 50 MICRONS MIN.,
*THE PRIMARY SHIPPING CARTON WILL BE LABELED 'COMPLIANT TO RoHS DIRECTIVE 2002/95/EC AND ELV ANNEX II OF DIRECTIVE 2000/53/EC',
CARTONS WITHOUT THIS LABEL MAY CONTAIN PRODUCT WITH TIN-LEAD IN THE PC TAILS.
- 3) PRODUCT SPECIFICATION AND PROCESSING PARAMETERS: PS-43860-003.
- 4) PACKAGING SPECIFICATION:
CONNECTOR ASSEMBLIES PACKAGED IN EXTRUDED TUBES PER MOLEX PACKAGING SPECIFICATION PK-43860-004.
- 5) ALL UNTOLERANCED DIMENSIONS ARE SHOWN FOR REFERENCE ONLY.
- 6) CONFORMS TO FCC REGULATION PART 68.5 FOR MODULAR JACKS.



| | |
|-----|-----|
| 5 | G11 |
| 4 | H |
| 3 | H |
| 2 | H |
| 1 | H1 |
| SHT | REV |

| MATERIAL NUMBER | CONNECTOR SIZE | DIM. "A" | DIM. "B" | CIRCUITS | HOUSING COLOR |
|-----------------|----------------|----------|----------|----------|---------------|
| 43860-0001 | 8 | .469 | .110 | 8 | BLACK |
| 43860-2001 | 8 | .469 | .080 | 8 | |
| 43860-0002 | 6 | .389 | .110 | 6 | |
| 43860-0003 | 6 | .389 | .110 | 4 | |
| 43860-0019 | 8 | .469 | .110 | 4 | |
| 43860-0020 | 6 | .389 | .110 | 2 | GRAY |
| 43860-0028 | 6 | .389 | .110 | 4 | |
| 43860-0029 | 8 | .469 | .110 | 8 | |
| 43860-0030 | 8 | .469 | .110 | 8 | BLUE |

| | | | | |
|--|---|--|--|--|
| ADDED BLUE COLOR EC NO: UCP/2004-2079 DRW: LSCHEMIDT 2004/06/02 CHKD: LSCHEMIDT 2004/06/03 APPR: FSMITH 2004/06/03 H1 | QUALITY SYMBOLS ▽ = 0 ▽ = 0 | GENERAL TOLERANCES (UNLESS SPECIFIED) mm INCH 4 PLACES ± --- ± --- 3 PLACES ± --- ± .010 2 PLACES ± 0.25 ± --- 1 PLACE ± --- ± --- ANGULAR ±1/2° | SCALE 4:1 DIMENSION STYLE IN/MM DRAWN BY TALEND DATE 1997/02/13 CHECKED BY ROBERTS DATE 1997/03/03 APPROVED BY FRY DATE 1997/03/04 | DESIGN UNITS INCH THIRD ANGLE PROJECTION REVISE ON CAD ONLY TITLE INVERTED MODULAR JACK ASSEMBLY MOLEX INCORPORATED MATERIAL NO. SEE CHART DOCUMENT NO. SD-43860-001 SHEET NO. 1 OF 5 |
| | DRAFT WHERE APPLICABLE MUST REMAIN WITHIN DIMENSIONS | | | |
| | THIS DRAWING CONTAINS INFORMATION THAT IS PROPRIETARY TO MOLEX INCORPORATED AND SHOULD NOT BE USED WITHOUT WRITTEN PERMISSION | | | |
| | THIS DRAWING CONTAINS INFORMATION THAT IS PROPRIETARY TO MOLEX INCORPORATED AND SHOULD NOT BE USED WITHOUT WRITTEN PERMISSION | | | |