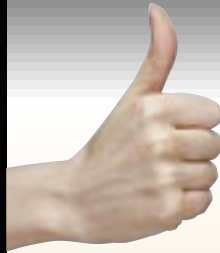


# Free High-Quality DAQ Software: The new MEsslabor

Virtual Instrument Panels for your DAQ Boards

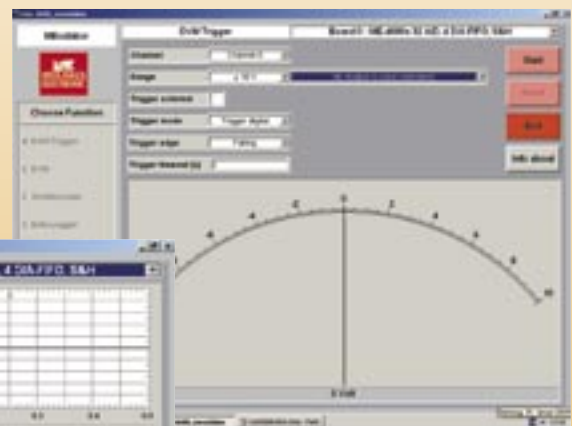


+++ Last Minute NEWS +++



**No programming required with the new MEsslabor!**

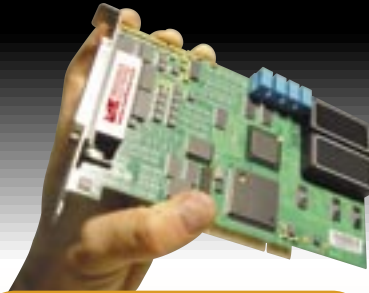
- **Data acquisition made easy!**
- Virtual instrument panels, ready to use:
- **Scope, digital voltmeter, data logger, digital channels, analog output, waveform generator, counters.**
- For immediate use with Windows.
- For the multifunctional DAQ boards of the ME-FoXX series and compatibles.





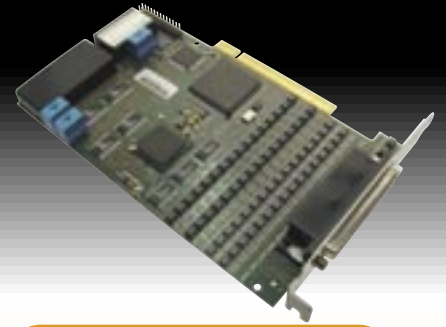
**For ME-Jekyll/ME-4610...**

Low-cost high-quality 16 bit/500 kHz DAQ board • 16 channels A/D • 32 digital I/Os • Counters



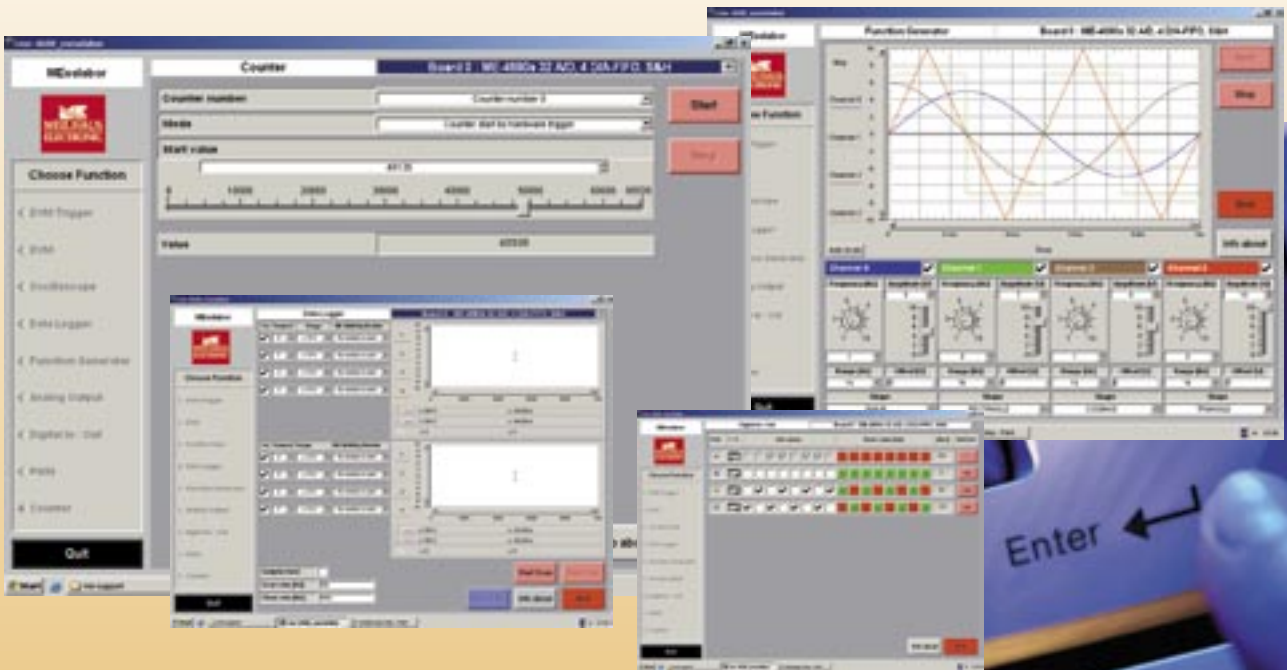
**For ME-FoXX/ME-46xx...**

16 bit/500 kHz multifunctional DAQ board series from low-cost to high-end • Up to 32 channels A/D • Up to 4 channels D/A • 32 digital I/Os • Counters • Full opto-isolation • Many extra features



**For ME-6000/ME-6100...**

16 bit/500 kHz analog output board • Up to 16 channels • Full opto-isolation (no common GND) • FIFOs, waveform generator • 16 TTL digital I/Os



Function	Description	Hardware requirements	Can be used with the boards...
<b>DVM Trigger</b>	Ext. triggered voltage measurement, 1 channel, digital voltmeter	Analog inputs	All models of the ME-FoXX series (ME-46xx). ME-Jekyll (ME-4610).
<b>DVM</b>	Voltage measurement, dig. voltmeter (multi channel)		
<b>Oscilloscope</b>	Oscilloscope panel, 8 channels		
<b>Data Logger</b>	Data logger/recorder, 8 channels		
<b>Function Generator</b>	Function/signal/waveform generator, 4 channels	Analog outputs with FIFOs	All models of the ME-6100 series. All ME-4680 models.
<b>Analog Output</b>	Simple analog output (also simultaneous)	Analog outputs	All models of the ME-6000 and ME-6100 series. All models ME-4660, ME-4670 and ME-4680
<b>Digital In/Out</b>	Digital input/output	Digital I/O channels	All models of the ME-FoXX series (ME-46xx) and ME-Jekyll (ME-4610). All models of the ME-6000 and ME-6100 series with digital I/Os (models ~01/2005 and later)
<b>PWM</b>	Output of square signals with variable duty cycle, "puls width modulation"	Counters	ME-Jekyll (ME-4610).
<b>Counter</b>	Counters (8254, 6 standard modes)		All models ME-4660, ME-4670 and ME-4680

**System Requirement:**

OS	Windows XP, 2000, 98/Me, NT
Software base	VEE Runtime, ready to use (VEE Pro package not required). Menu controlled, easy to use virtual instrument panels
Supported boards	ME-Jekyll/ME-4610. ME-FoXX series: ME-4650, ME-4660, ME-4670, ME-4680 all versions. ME-6000, ME-6100 all versions
Included?	Free, included with the supported boards, as soon as available (ME-Power-CD), or download from the ME web-site: <a href="http://www.meilhaus.com/download">www.meilhaus.com/download</a>