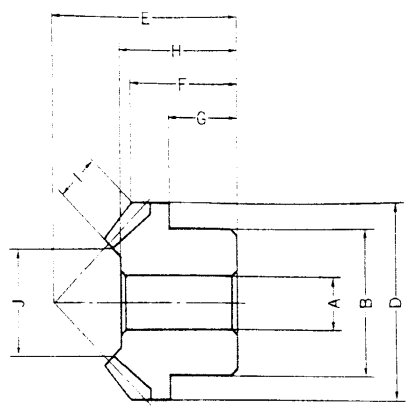
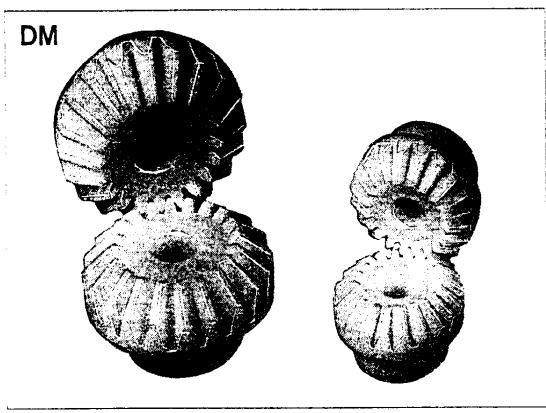


DM0.5-20 705 - 6552  
 DM0.8-20 " - 6564  
 DM1-20 " - 6618  
 DM1.5-20 " - 6620

## INJECTION MOLDING MITER GEARS



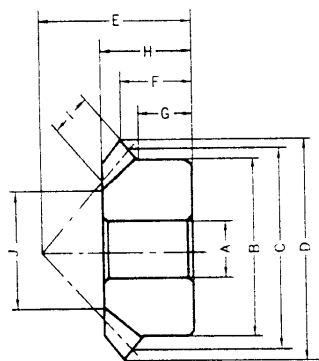
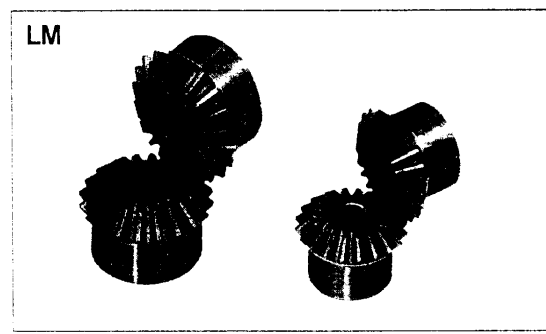
Ratio 1/1 Injection Molding 20 Miter Gears ( $m0.5 \sim m1.5$ ) Material: Duracon 20° Pressure Angle

705  
- 6552  
- 6564  
- 6618  
- 6620

Catalog No.	m	z	A	B	C	D	E	F	G	H	I	J	(Type) Weight-gf
DM0.5-20	0.5	20	3	8	10	10.7	11	6.4	4	7	2.5	5.9	(B) 0.6
DM0.8-20	0.8	20	5	12	16	17.1	16	8.6	5	10	3.5	10.1	(B) 2.0
DM1-20	1	20	6	16	20	21.4	21	11.7	7	13	4.5	12.5	(B) 4.2
DM1.5-20	1.5	20	8	20	30	32.1	30	16.1	10	19	7	18.1	(B) 12.6

Pitch Angle 45° Face Angle 49°48'

## SINTERED METAL MITER GEARS



Ratio 1/1 20 Miter Gears ( $m0.8 \sim m1.5$ ) Material: SMF5040 (Sintered Metal) 20° Pressure Angle

Catalog No.	m	z	AH7	B	C	D	E	F	G	H	I	J	(Type) Weight-kgf
LM0.8-20	0.8	20	4	12	16	17.13	16	8.57	6	11	4.24	8.5	(B) 0.010
LM1-20	1	20	5	16	20	21.41	20	10.71	8	13.5	4.95	11.0	(B) 0.022
LM1.25-20	1.25	20	6	22	25	26.77	23	11.38	9	15	6.36	13.5	(B) 0.037
LM1.5-20	1.5	20	6	26	30	32.12	30	16.06	13	21	8.48	15.2	(B) 0.075

Pitch Angle 45° Face Angle 49°48'