

NOTES:

1) MATERIALS:

- HOUSING: GLASS FILLED LCP (LIQUID CRYSTAL POLYMER), UL 94V-0, COLOR: BLACK.
- MOLDED STICK: GLASS FILLED LCP (LIQUID CRYSTAL POLYMER), UL 94V-0, COLOR: BLACK.
- MALE TERMINAL: PHOSPHOR BRONZE
- OUTER SHELL: DEEP DRAWN STEEL.

2) PLATING :

- TERMINAL: .000030/(0.000762) MINIMUM GOLD IN SELECTIVE AREA; .000100/(0.00254) MINIMUM TIN IN SELECTIVE AREA; OVER NICKEL UNDERPLATE OVERALL.
- OUTER SHELL: .000150/(0.00381) MINIMUM TIN OVER .000050/(0.00127) MINIMUM NICKEL OVER COPPER FLASH OVERALL (OPTIONAL).

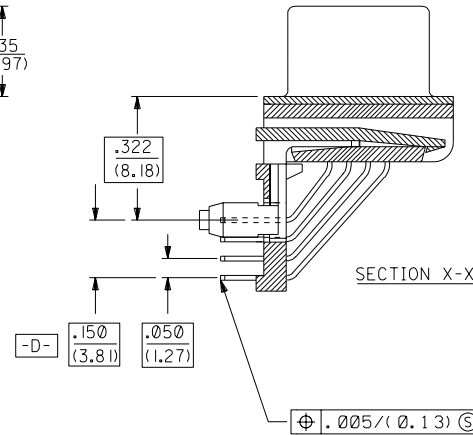
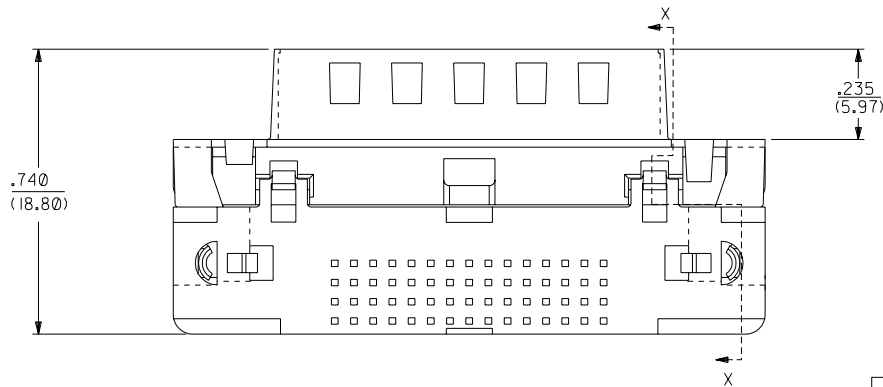
3) CONFORMS TO PRODUCT SPECIFICATION PS-70928.

4) PARTS TO BE PACKAGED IN TUBES.

5) THREAD GAUGE MAY REQUIRE UP TO 1 IN.-LB. OF TORQUE DURING GAUGING PROCESS.

NOTE FOR LEAD FREE CONVERSION:

THE PRIMARY SHIPPING CARTON WILL BE LABELED "COMPLIANT TO ROHS DIRECTIVE 2002/95/EC AND ELV ANNEX II OF DIRECTIVE 2000/53/EC". CARTONS WITHOUT THIS LABEL MAY CONTAIN PRODUCT WITH LEAD.



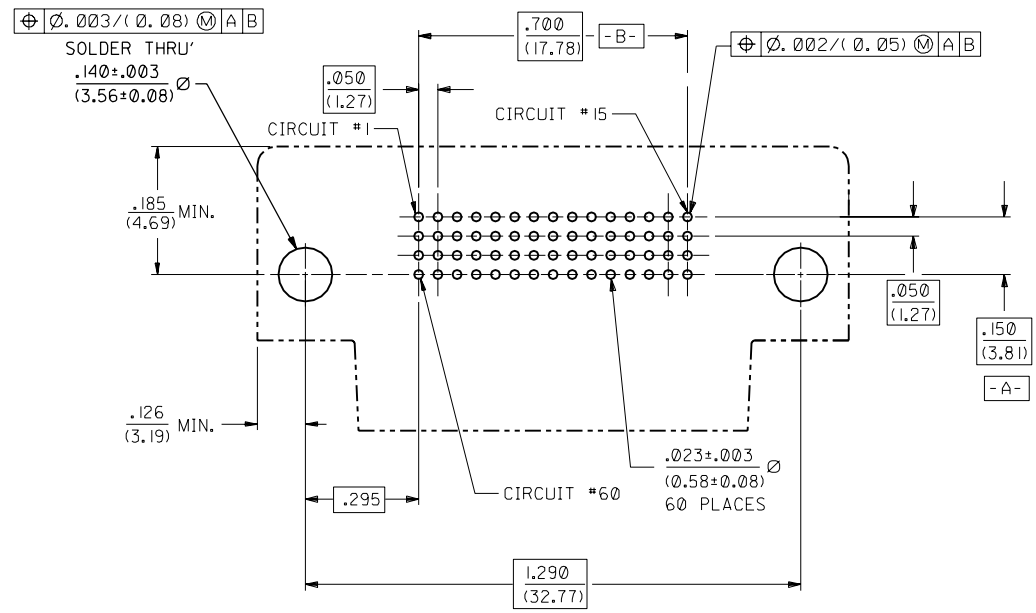
PART NUMBER	ENGINEERING NUMBER	DIM. 'A'
015-92-2250	70929-0001	.092±.012
015-92-2253	70929-0002	.104±.012

DIMENSIONS SHOWN (METRIC) INCH	
UNLESS OTHERWISE SPECIFIED TOLERANCES: ANGULAR ± 1/2°	
3 PLACE	± ---
2 PLACE	± --- ± ---
1 PLACE	--- ± ---

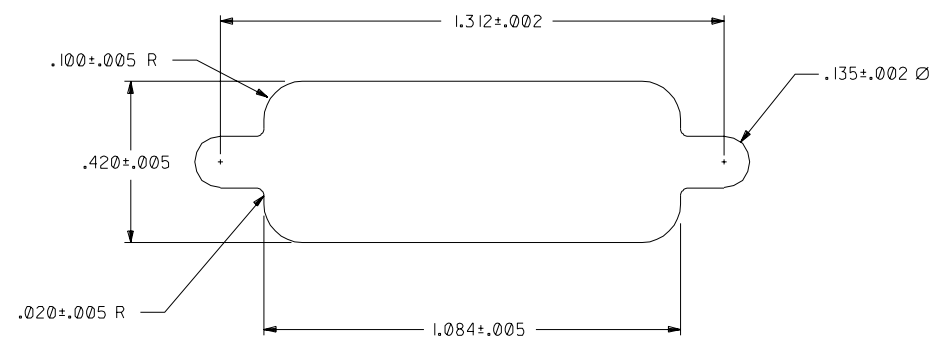
▽ = 0	▼ = 0	REVISE ONLY ON CAD SYSTEM
TITLE 0.050" PITCH LFH 60 CKT R/A D-SUB SALES ASSY. MALE		
MOLEX INCORPORATED LITSE, ILL. 60532	SHEET NO. 1 OF 2	DATE 12 / 17 / 90
PART NO. SDA-70929-0001	DRWG. NO.	

DRWG. BY MOS	CHK'D. BY CAB	FILE NAME 570929X1	THIS DRAWING CONTAINS INFORMATION THAT IS PROPRIETARY TO MOLEX INC. AND SHOULD NOT BE USED WITHOUT WRITTEN PERMISSION
APP'D. BY CAB	SCALE 4: 1	DRWG. NO. SDA-70929-0001	SIZE CD

G	LEADFREE ECN# UCP2004-1998 DMORGAN 04/04/14
F1	REVISED PER ECN U8-1031 O'DELL 97/10/24
F	REVISED PER ECN U70417 SCHMIDG 96/11/08
E	REVISED PER ECN U6-1485 DRS 05/29/96
D1	REVISED PER ECN U6-1233 DRS 04/03/96
D	REVISED PER ECN U6-0641 DRS 12/01/95
C2	MODIFIED PER ECN U40503 DKS 4-15-94
C1	MODIFIED PER ECN U6-1051 DRS 07.15.92
C	MODIFIED PER ECN U2-0667 MOS 4.28.92
B	MODIFIED PER ECR U1-2081 MOS 10.29.91
A	RELEASED PER ECR U10958 MOS 5.16.91



RECOMMENDED P.C.B. LAYOUT
COMPONENT SIDE



RECOMMENDED PANEL CUT-OUT

F1	SEE SHEET I
E	SEE SHEET I

DIMENSIONS SHOWN (METRIC) INCH		▽ = 0		▼ = 0		REVISE ONLY ON CAD SYSTEM	
UNLESS OTHERWISE SPECIFIED TOLERANCES ANGULAR ± 1/2°							
3 PLACE ± --- ---		INCH		METRIC		TITLE	
2 PLACE ± --- ± ---		---		---		.050" PITCH LFH 60 CKT	
1 PLACE --- ± ---		---		---		R/A D-SUB SALES ASSY.	
DRAWING WHERE APPLICABLE MUST REMAIN WITHIN DIMENSIONS		MOLEX INCORPORATED		SHEET NO. 2		DATE 4/15/94	
DRAWN BY MOS		CHK'D BY CAB		PART NO. SDA-70929-0001		DRAWG. NO. SDA-70929-0001	
APP'D BY CAB		SCALE 4:1		FILE NAME S70929X1A		DIV. CD	
THIS DRAWING CONTAINS INFORMATION THAT IS PROPRIETARY TO MOLEX INC. AND SHOULD NOT BE USED WITHOUT WRITTEN PERMISSION.							