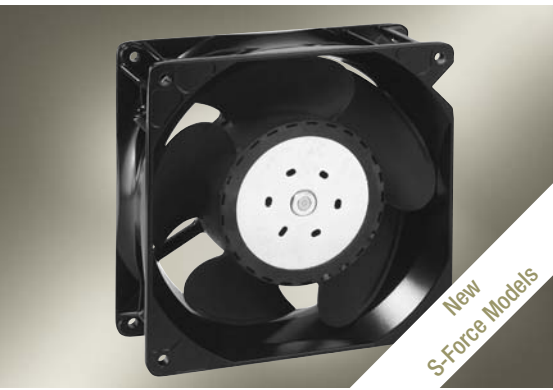


max. 670 m<sup>3</sup>/h

# DC Axial Fans

Series 5300 140 x 140 x 51 mm



### Highlights:

- 3-phase fan drive high degree of running smoothness.
- Highly stable characteristic curve for high air flow with high back pressure.
- Low operating noise at high back pressure.
- Standard with PWM control input and speed signal, additional inputs and outputs on request.

### General characteristics:

- Material: aluminium housing, fiberglass-reinforced PA impeller; housing with grounding lug for screw M4 x 8 (Torx).
- Protected against reverse polarity and blocking.
- Electrical connection via single leads AWG 20, TR 64. Stripped and tinned ends.
- Air intake over struts. Rotational direction CCW looking at rotor.
- Mass: 900 g.

Nominal Data		Air Flow	Air Flow	Nominal Voltage	Voltage Range	Noise	Sound Power	Sinter-Sleeve Bearings Ball Bearings	Power Input	Nominal Speed	Temperature Range	Service Life L <sub>10</sub> (40 °C) ebm-papst-Standard	Service Life L <sub>10</sub> (T <sub>max</sub> ) ebm-papst-Standard	Life expectancy L <sub>10Δ</sub> (40 °C)	Curve	Specials
Type		m <sup>3</sup> /h	CFM	V DC	V DC	dB(A)	Bel	□/■	Watt	min <sup>-1</sup>	°C	Hours	Hours	Hours		
NEW 5312 /2 TDHP		410	241.3	12	8...16	70	7.7	■	41	6 000	-20...+70	70 000 / 35 000	140 000	140 000	1	/2
NEW 5314 /2 TDHP		410	241.3	24	16...36	70	7.7	■	41	6 000	-20...+70	70 000 / 35 000	140 000	140 000	1	/2
NEW 5314 /2 TDHHP		490	288.4	24	16...36	75	8.1	■	67	7 000	-20...+70	62 500 / 30 000	120 000	120 000	2	/2
NEW 5318 /2 TDHP		410	241.3	48	36...72	70	7.7	■	41	6 000	-20...+70	70 000 / 35 000	140 000	140 000	1	/2
NEW 5318 /2 TDHHP		490	288.4	48	36...72	75	8.1	■	67	7 000	-20...+70	62 500 / 30 000	120 000	120 000	2	/2
NEW 5318 /2 TDH4P		670	394.3	48	36...72	79	8.8	■	144	9 200	-20...+65	57 500 / 32 500	115 000	115 000	3	/2

Speed control range from 1000 min<sup>-1</sup> up to maximum nominal speed. Stationary at 0 % PWM, maximum speed when no sensor is connected.

