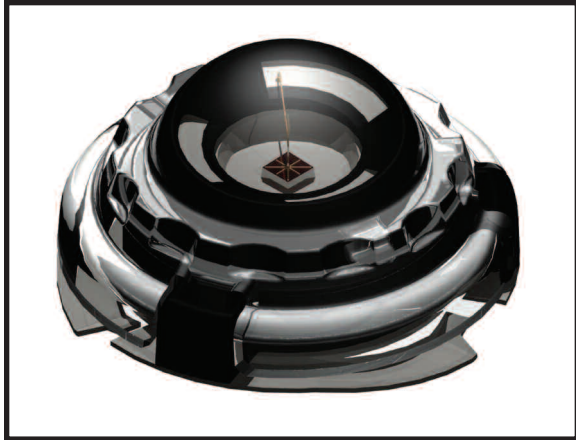




...the power is in the package



9900-1201-47

Blue Power LED

Screw thread design

Lambertian radiation pattern



Typical Device Characteristics @ 350mA

| | |
|----------------------------|------------------|
| Luminous Flux | 12 lumens |
| Dominant Wavelength | 470 K |
| Forward Voltage | 3.50 V |
| Viewing Angle | 120° |

Product Features

- Solder-Free mechanical attachment for easy installation and replacement
- Annular contact arrangement eliminates need for radial alignment
- Excellent thermal coupling to lighting system
- Large LED chip allows high drive current
- Outstanding light output
- Wide viewing angle
- UV resistant cover lens
- RoHS Compliant

Device Characteristics

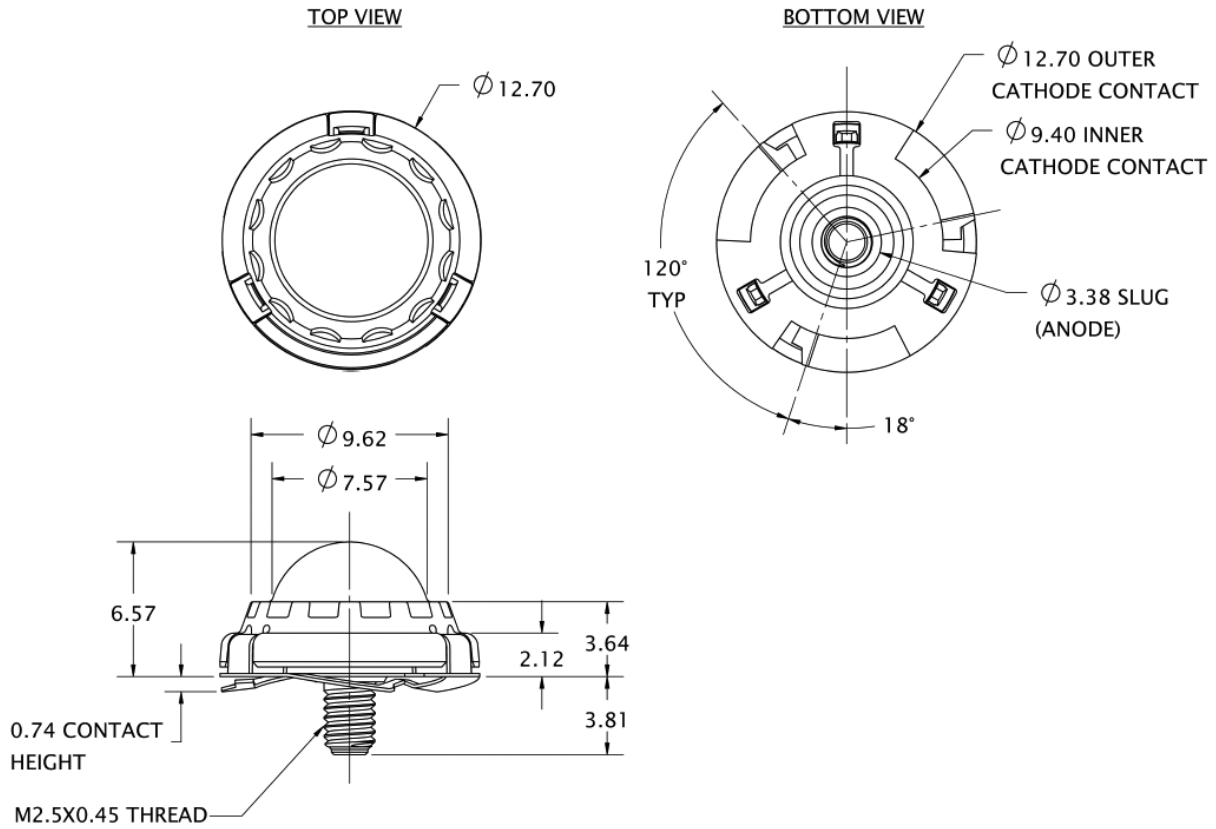
Forward Current = 350mA, Junction Temperature, $T_j = 25^\circ\text{C}$

| | Minimum | Typical | Maximum |
|---|---------|--------------|---------|
| Luminous Flux (ϕ_v) | 7 lm | 12 lm | |
| Dominant Wavelength (λ_D) | 465 nm | 470 nm | 475 nm |
| Peak Wavelength (λ_p) | | 466 nm | |
| Spectral Half-Width ($\Delta\lambda^{1/2}$) | | 24 nm | |
| Viewing Angle ($2\theta^{1/2}$) | | 120° | |
| Forward Voltage (V_f) | 3.00 V | 3.50 V | 4.10 V |
| Dynamic Resistance (R_D) | | 1.3 Ω | |
| Thermal Resistance ($R\theta_{j-c}$) | | 10°C/W | |

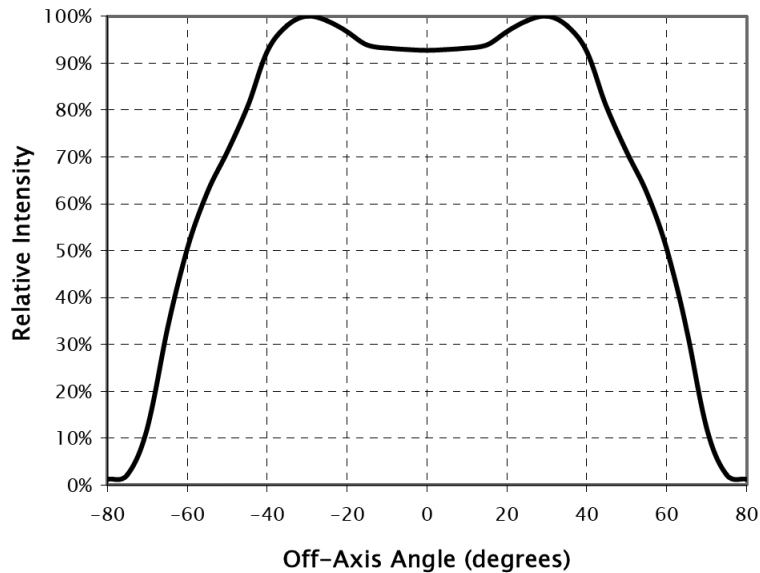
Absolute Maximum Ratings

| | |
|-----------------------------|-----------------|
| DC Forward Current | 350 mA |
| Peak Pulsed Forward Current | 500 mA |
| Maximum Pulse Duty Cycle | 50% |
| Maximum Pulse Duration | 10 ms |
| Reverse Voltage | > 5 V |
| LED Junction Temperature | 125°C |
| Operating Temperature Range | -40°C to +85°C |
| Storage Temperature Range | -40°C to +100°C |

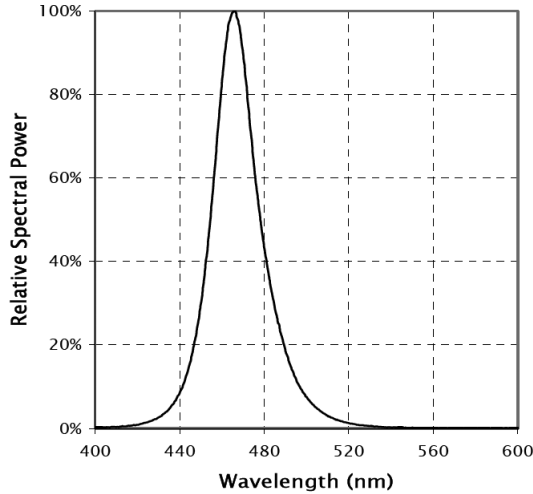
Mechanical Dimensions



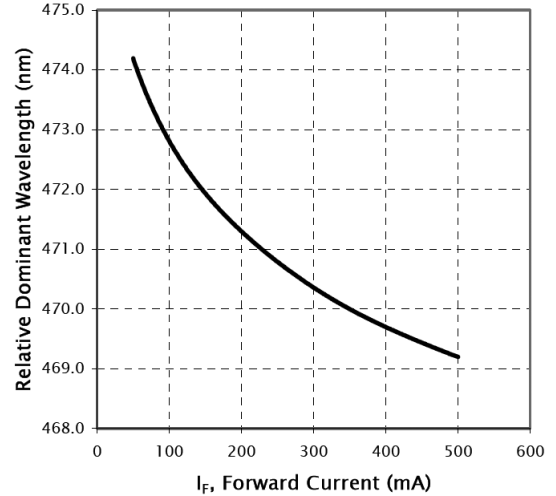
Spatial Distribution Pattern



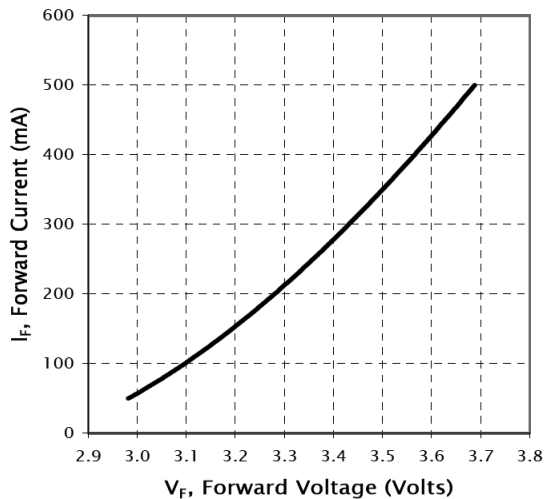
Spectral Power Distribution



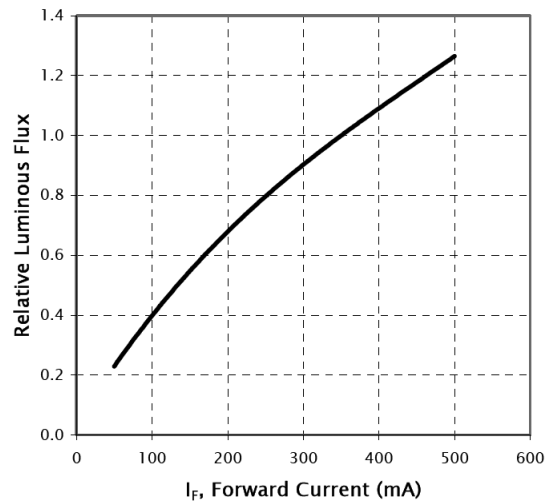
Wavelength vs. Forward Current



Forward Voltage vs. Forward Current



Luminous Flux vs. Forward Current



A product of Weldon | 3656 Paragon Drive | Columbus, Ohio 43228 USA
 800.989.2718 | 614.529.7230 | FAX 614.527.3547 | <http://www.v-led.com>

Weldon Technologies reserves the right to make changes at any time to product specifications without notice.