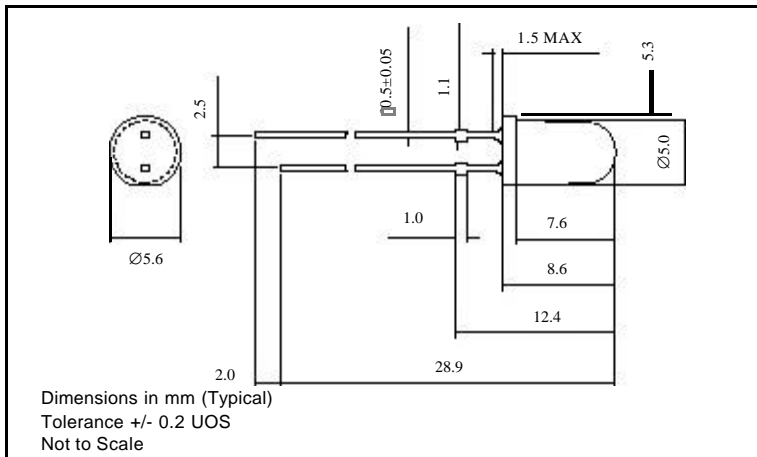
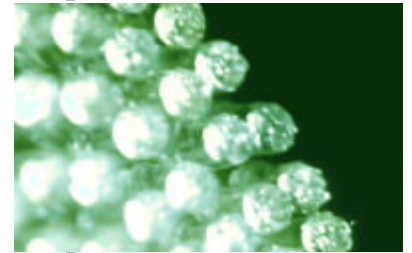


**DISCRETE LEDs - Ø 5mm Green**



- High luminous intensity
- Also available as a 3mm device and in SMT format
- Solid state reliability
- Wider viewing angle version available



**110104 SERIES**

**MLQ = 50**

**Ordering Information & Typical Technical Characteristics (Ta = 25°C)**

Mean Time Between Failure = 100,000 Hours. \* Duty Cycle ≤ 1/10, Pulse Width ≤ 10msec

PART NUMBER	COLOUR	TYP. FWD VOLTAGE V <sub>f</sub> @ I <sub>opr</sub>	MAX FWD VOLTAGE V <sub>f</sub> @ I <sub>opr</sub>	FORWARD CURRENT I <sub>opr</sub>	MAX REV CURRENT I <sub>r</sub> (V <sub>r</sub> =5V)	LUMINOUS INTENSITY I <sub>v</sub> @I <sub>opr</sub>	CHROMATICITY COORDINATES	VIEWING ANGLE 2θ <sup>1/2</sup>
-------------	--------	---	--	-------------------------------------	--	--	--------------------------	------------------------------------

**OPTICAL / ELECTRICAL CHARACTERISTICS (Ta = 25°C)**

110104	Green	3.5	4.0	20	50	10,000	0.17 / 0.700	15
UNITS	Water Clear	V	V	mA	μA	mcd	x / y	deg

PART NUMBER	COLOUR	FORWARD CURRENT I <sub>opr</sub> max	PEAK FWD CURRENT I <sub>fp</sub> *	REVERSE VOLTAGE V <sub>r</sub> max	POWER DISSIPATION P <sub>d</sub> max	PEAK WAVELENGTH Typ. λ <sub>p</sub>	OPERATING TEMP T <sub>opr</sub>	STORAGE TEMP T <sub>stg</sub>
-------------	--------	---	---------------------------------------	---------------------------------------	---	--	------------------------------------	----------------------------------

**ABSOLUTE MAXIMUM RATINGS (Ta = 25°C)**

110104	Green	30	100	5	120	525	-30 to +85	-40 to +100
UNITS	Water Clear	mA	mA	Vdc	mW	nm	°C	°C

**PRECAUTIONS FOR HANDLING ELECTROSTATIC SENSITIVE LEDs**

**Static Electricity and Surge**

Static electricity and surge will damage the LED and a high standard of care must be taken during handling. It is recommended that a wristband, conductive mat or anti-electrostatic glove is used when handling the LEDs. All devices, equipment (e.g. soldering iron points) and machinery must be properly grounded.

**SAFETY PRECAUTIONS FOR HANDLING HIGH BRIGHTNESS LEDs**

The light output of the Products may cause injuries to human eyes in circumstances where they are viewed directly with unshielded eyes for more than a few seconds.

Please refer to European Standard BSEN 100015-1 1992 for further information.

© Marl Optosource 2000