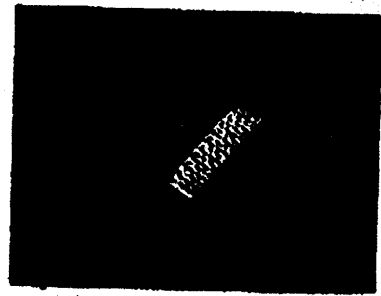


Model: **TELES.FON**

Manufacturer: TELES AG, Dovesstr. 2-4, D-10587 Berlin



### TECHNICAL DATA:

Model	ISDN Telephone with Display
Length, Width, Height	206 x 176 x 50 mm
Place of use	Small Office - Home Office and Residence
Services supported	ISDN Telephony

Power consumption from NT	< 100mW in idle state
ISDN connection	RJ-45 plug to ISDN basic or PBX access (Point-to-Multipoint Connection)
D channel protocols (Layer 2/3)	DSS1 (Euro-ISDN)
Supported features	3-party-conference, Call forwarding (immediately / when busy / after time)
Display	two line display with 16 characters plus symbols
Configuration	By software with the help a TELES-PC-ISDN adapters on the same S/T interface or by key pad

Features	<ul style="list-style-type: none"> <li>• Hands-free, loudspeaker operation</li> <li>• On-hook dialing</li> <li>• Partial call block for 5 numbers (i.e. prefix 00 for calls going abroad)</li> <li>• Global call block (5 definable emergency numbers dialable in any case)</li> <li>• Caller list with up to 10 numbers</li> <li>• 18 speed dial numbers</li> <li>• Variable ring pitch and volume per MSN</li> <li>• Caller-ID</li> <li>• Redial with history function (memory of the last 3 calls)</li> <li>• Direct call, Room monitoring with Noise-Detection and bidirectional</li> <li>• Do not disturb, Call waiting</li> <li>• Two-way-splitting, Parking</li> <li>• Disconnect key</li> <li>• Display of call duration and charges</li> <li>• PIN-protection (5-digit)</li> <li>• Caller-ID suppression</li> <li>• several charges account</li> <li>• Call counting per MSN</li> <li>• Return call when busy</li> </ul>
----------	---

Package contents	TELES.FON, manual, BRI connection cable
Documentation	manual in English
Warranty	6 months

© TELES AG Issue: March 97

Specifications subject to change

Switch Board: +49 30/399 28-00  
 International Sales: +49 30/399 28-033  
 Fax: +49 30/399 28-01  
 Internet: <http://www.teles.de>

*plug & play*  
 from **TELES**  
 THE reliable Systems

\*\*\*END\*\*\*