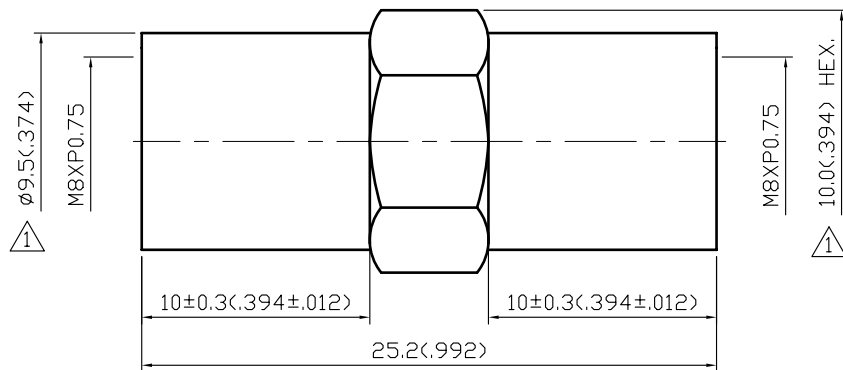


NO	DESCRIPTION	DATE
①	DEL REF. BACKGROUND FORMAT UPDATED	07.20.09'
②	MODIFICATION CENTER CONTACT③	02.05.10'
③	ADD 2.3 INSULATION -40°C TO +60° C PDM → -55°C TO+125° C PDM → TEFLON	04.27.10'



1.0 ELECTRICAL

- 1.1 FREQUENCY RANGE: DC-900 MHz
1.2 NOMINAL IMPEDANCE: 50 OHM

2.0 MATERIALS

- 2.1 BODIES: BRASS PER JIS-C3604
2.2 CENTER CONTACT: BRASS PER JIS-C3604
2.3 INSULATION: TEFLON PER ASTM D1457 AND ASTM D1710 ③

3.0 FINISHES AND OTHERS

- 3.1 SEE BELOW TABLE FOR DETAILS.

4.0 ENVIRONMENTAL

- 4.1 OPERATING TEMPERATURE RANGE: -55°C TO+125° C ③

NO	DESCRIPTION	MATERIAL	Q'TY	FINISH
3	CENTER CONTACT	BRASS	1	GOLD
2	INSULATION	TEFLON	2	NONE
1	BODY	BRASS	1	NICKEL 100μ" MIN.

APPROVED

by _____ DATE: _____

DESCRIPTION		FME PLUG-FME PLUG							
製圖	DRAWN	TOLERANCE	品名	23-03-1	T.G.N	日期	DATE	版次	REV.
	Yoko		X	±0.2	ROHS COMPLIANT (50Ω)	04.22.93	A-3		
檢圖	CHECK	單位	UNIT	DWG.NO. 23-0021					
	Jacky		.XX	mm(in)					
認定	APPROVAL	比例	SCALE	佳楠精密電子股份有限公司					
	Lewis		.XXX	±0.05	CHIN NAN PRECISION ELECTRONICS CO.,LTD.				
			ANGLE	±5°					