

BOX CONNECTOR STRIPS BCS SERIES

SPECIFICATIONS

For complete specifications see www.samtec.com?BCS

Insulator Material: Black Liquid Crystal Polymer

Contact Material: Phosphor Bronze

Plating: Au or Sn over 50µ" (1,27µm) Ni

Current Rating: 3A @ 80°C ambient (-TE/-DE/-PE mated with TSM)

4A @ 80°C ambient (-HE mated with TSW-D)

Voltage Rating: 475 VAC (-TE/-DE/-PE mated with TSM)

450 VAC (-HE mated with TSW)

Operating Temp Range: -55°C to +125°C

Contact Resistance: 10 mΩ max

Insertion Depth: (4,34mm) .171" to (7,24mm) .285" from top, (5,64mm) .222" plus board thickness minimum from bottom. -HE is (4,34mm) .171" to (6,35mm) .250"

Insertion Force: (Single contact only) 5oz (1,39N) avg. (.025" (0,64mm) SQ pin)

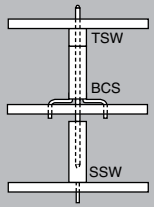
Withdrawal Force: (Single contact only) 3oz (0,83N) avg. (.025" (0,64mm) SQ pin)

RoHS Compliant: Yes

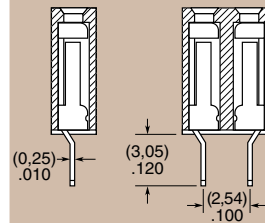
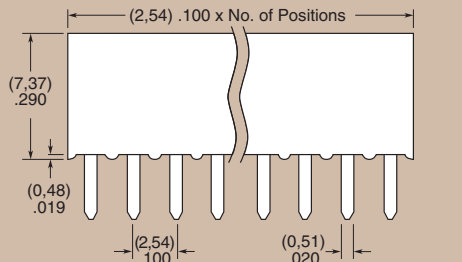
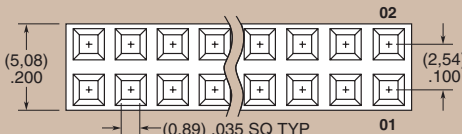
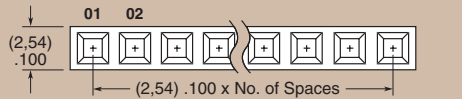
Processing: Max Processing Temp: 230°C for 60 seconds, or 260°C for 20 seconds 3x Lead-Free Solderable: Yes

BCS	1	NO. PINS PER ROW	PLATING OPTION	ROW OPTION	ENTRY OPTION	OTHER OPTION
			-L = 10µ" (0,25µm) Gold on contact, Matte Tin on tail	-S = Single -D = Double		- "XX" = Polarized Position (-BE not available)

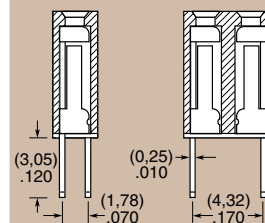
APPLICATION



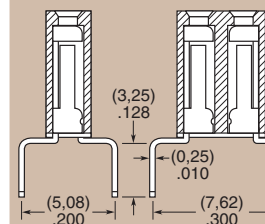
01 thru 50



-TE
= Top Entry

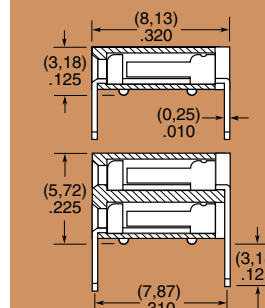
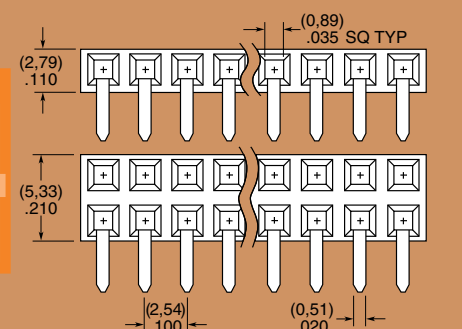


-DE
= Top Entry
(For Bottom Entry specify -DE-BE)
Cannot be used with plated through-holes



-PE
= Pass Through Entry
(For Bottom Entry specify -PE-BE)

APPLICATIONS



-HE
= Horizontal Entry

Note: Some lengths, styles and options are non-standard, non-returnable.

Due to technical progress, all designs, specifications and components are subject to change without notice.

WWW.SAMTEC.COM