



# PHASE ANGLE ELECTRONIC HEAT SWITCH UP TO 15A

**QLC**

X10206

## INTRODUCTION

These switchable phase angle power regulators are robust and compact units, ideal for controlling single phase mains driven loads. The standard QLC units are for 230V supply, with an integral three position and off control switch. The large triac enables the unit to handle high inrush currents with ample safety margin on industrial installations. An adhesive backed silver label and hairline knob are available as optional extras.

## APPLICATIONS

Suitable for quartz lamps, conventional resistive heating elements in series or parallel configurations. Applications including ovens, moulders, dryers and some inductive loads, such as, transformers and motors.

## FEATURES

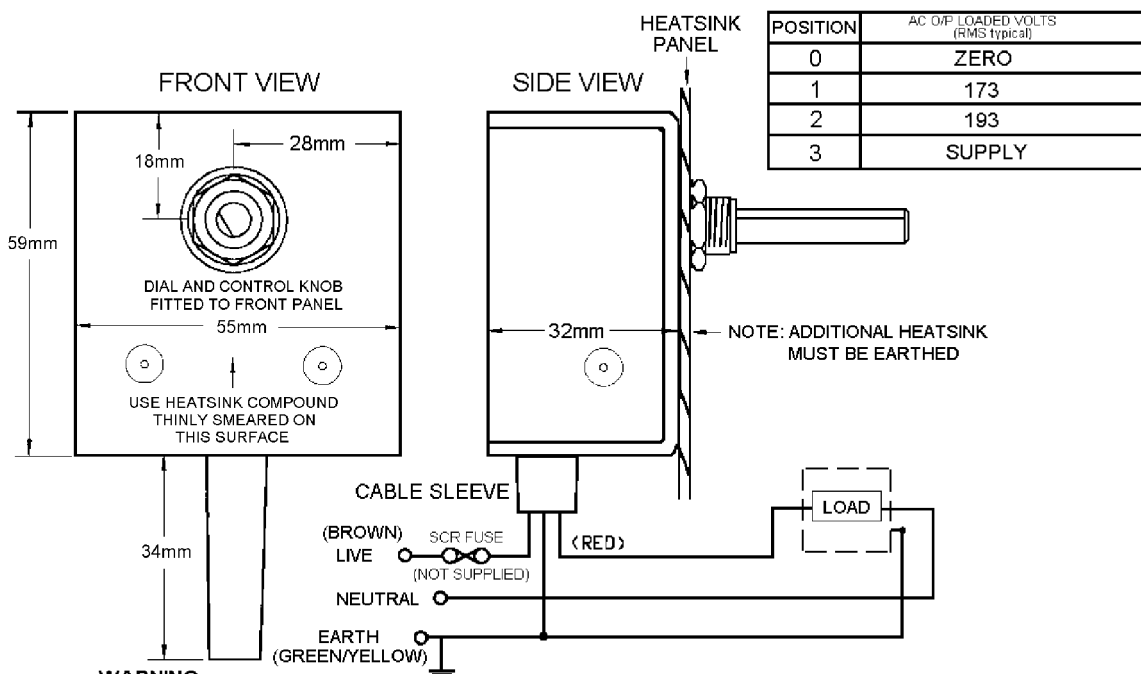
- Large triac for inrush protection.
- Three position & off control.
- Single hole fixing.
- Rugged and compact.
- Optional knob & dial.



**RoHS Compliant  
Directive  
2002/95/EC**

## INSTALLATION

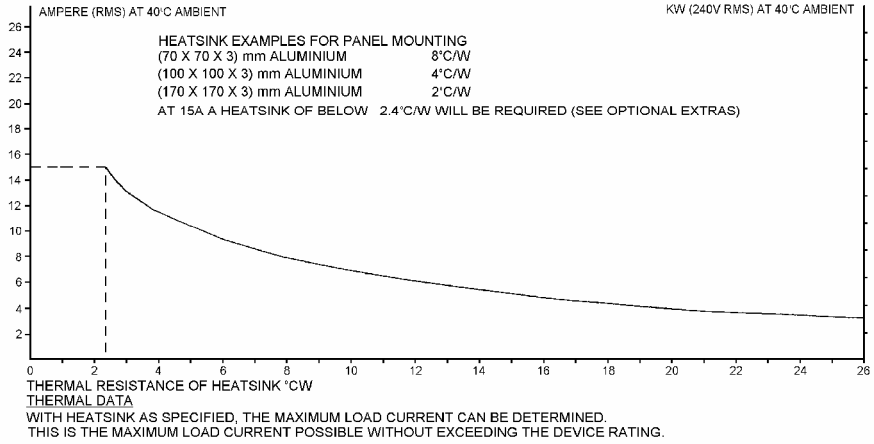
### CONNECTIONS AND DIMENSIONS



### WARNING

LIVE TERMINALS - SWITCH OFF SUPPLY BEFORE COMMENCING ANY SERVICE WORK.  
FOR HEATSINK PANEL MOUNTING  
A 10mm HOLE IS REQUIRED TO ACCEPT MOUNTING BUSH.  
USE HEATSINK COMPOUND FOR EFFECTIVE THERMAL COUPLING.

## INSTALLATION



## SPECIFICATIONS

Triac limiting RMS. On state current	26A	Isolation voltage	2500V rms.
Unit limiting RMS. On state current	15A	I <sup>2</sup> t limiting value for fusing	112A <sup>2</sup> s
Peak single cycle surge @ 10ms	320A	Mains supply ( within 10%)	230V ac @ 50/60 Hz
Max load at 20°C ambient (without extra heatsink)	10A Min	operating current	200mA
Max unit operating temperature	65°C	Unit storage temperature range	-20 to +85°C

### FURTHER DIMENSIONS

Shaft diameter	6.3mm	Shaft projection from bush	30mm
Bush length	5mm	Standard cable length	400mm

## FUSING

It is recommended to use semiconductor (fast acting) type fuses or circuit breakers (Semiconductor-MCB) for protection. On initial 'switch on' some loads may need an increased Factor of Safety (F of S) for Unit and/or Device protection. See SRA Data sheet for further information.

## CE MARKING

This family carries a "CE" marking. These phase angle controllers need a suitable remote filter. For more information see recommendations section and contact our sales desk. (See Declaration of Conformity)

## RECOMMENDATIONS

Other documents available on request, which may be appropriate for your application: -

CODE	IDENTITY	DESCRIPTION
X10229	RFI	Single Phase Filtering recommendations - addressing EMC Directive
X10213	ITA	Interaction, uses for phase angle and for burst fire control.
X10255	SRA	Safety requirements - addressing the Low Voltage Directive (LVD) including: - Thermal data/cooling; "Live" parts warning & Earth requirements; Fusing recommendations.
AP02/4	COS	UAL Conditions of sale.

**NOTE** It is recommended that installation and maintenance of this equipment should be done with reference to the current edition of the I.E.E. wiring regulations (BS7671) by suitably qualified/trained personnel. The regulations contain important requirements regarding safety of electrical equipment (For International Standards refer to I.E.C/ directive IEC 950).

## ORDER CODE:

State part number: QLC 230V AC  
 Optional extras include: Knob, Dial, Heatsink paste, Filter.  
 Note: When ordering a filter the maximum current the QLC is to be used at will be required



## UNITED AUTOMATION LIMITED

1 Southport Business Park  
 Kew  
 Southport, PR8 4HQ  
 ENGLAND

Tel: 0044 (0) 1704 – 516500 Main  
 Tel: 0044 (0) 1704 – 516516 Sales  
 Fax: 0044 (0) 1704 – 516501  
 Enquiry@united-automation.com  
 www.united-automation.com

Page No. 2 of 2 Issue 2

Date 25/10/99



This document was created with Win2PDF available at <http://www.daneprairie.com>.  
The unregistered version of Win2PDF is for evaluation or non-commercial use only.