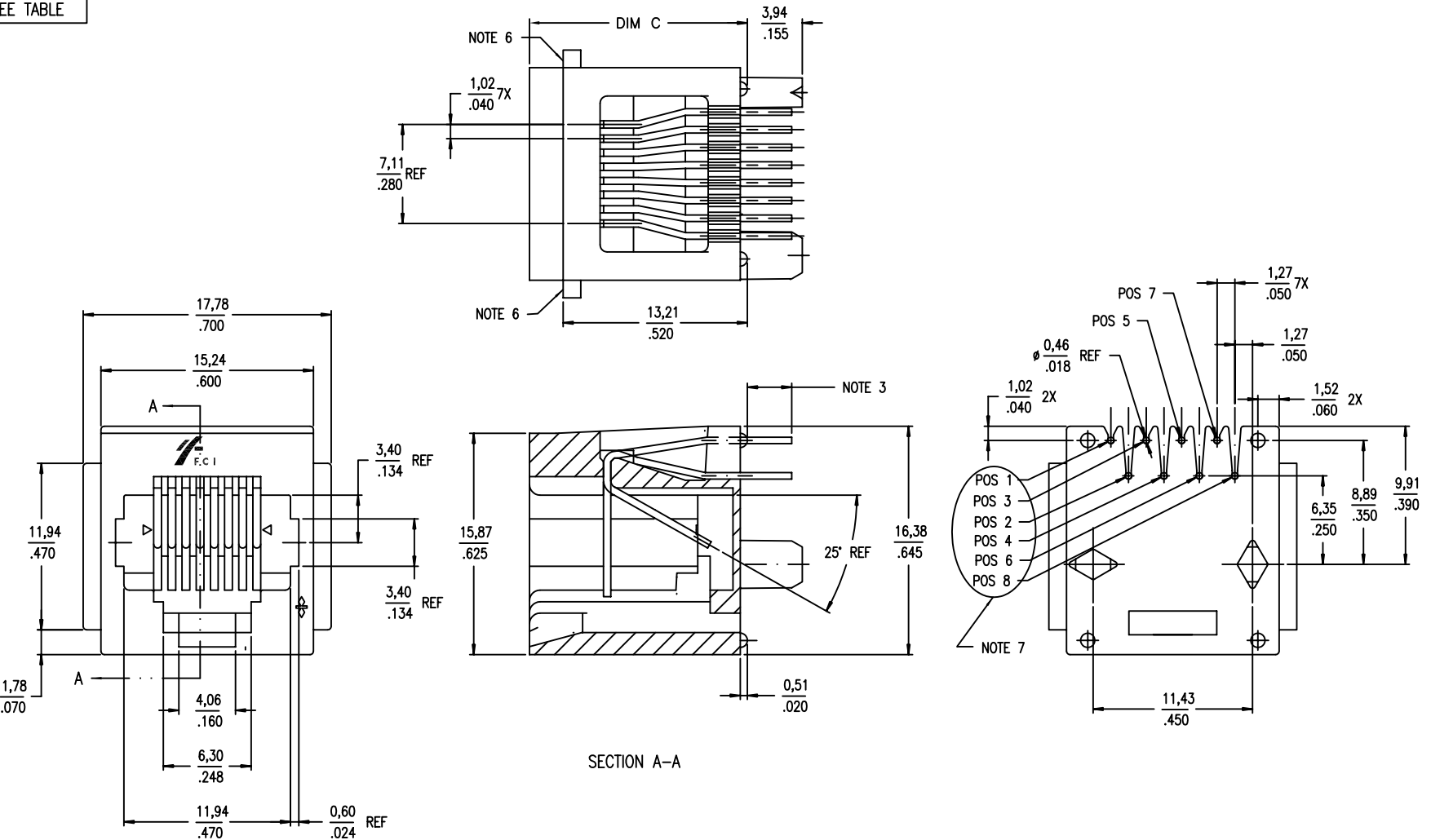


PRODUCT NO.

SEE TABLE

Tous droits strictement reserves. Reproduction ou communication a des tiers interdite sous quelque forme que ce soit sans autorisation ecrite du proprietaire. Propriete de c FCI. Droits de reproduction FCI.

All rights strictly reserved. Reproduction or issue to third parties in any form whatever is not permitted without written authority from the proprietor. Property of FCI. Copyright FCI.



SECTION A-A

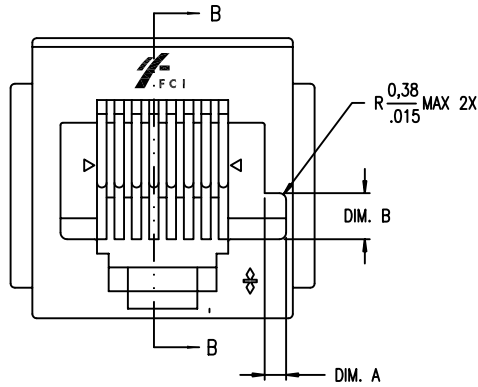
mat'l. code				tolerances unless otherwise specified		CUSTOMER COPY	 www.fciconnect.com
ltr	ecn no	dr	date	linear	.XX ±.01/.X±.3		
V	S90054	BCL	4/7/99		.XXX ±.005/.XX±.13		8 POS VERTICAL P.C.B. MOD JACK ASSY
W	T90350	TC	2/22/00		.XXXX ±.0020/.XXX±.051		
X	S00022	BCL	6/26/00	angles	0° ±2°	scale	size/ dwg no
Y	N00059	MC	5/25/00	dr	JANET 2/22/00		
AA	N00186	MC	2/19/00	enr	M.CHENG 12/19/00	69255	sheet
AB	N05-0022	MHT	2/18/05	chr	M.CHENG 12/19/00		
AC	M05-0067	MHT	4/8/05	appd	M.CHENG 12/19/00		
sheet index	revision sheet	AC	AC				
		1	2				

Tous droits strictement reserves. Reproduction ou communication a des tiers interdite sous quelque forme que ce soit sans autorisation écrite du propriétaire. Propriete de c FCI. Droits de reproduction FCI.

**FCI**

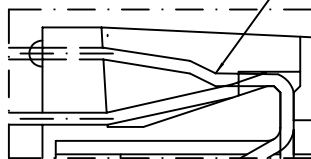
All rights strictly reserved. Reproduction or issue to third parties in any form whatever is not permitted without written authority from the proprietor. Property of FCI. Copyright FCI.

PRODUCT NO. ④	DIM. A	DIM. B	DIM. C	STYLE	POSITIONS LOADED	CONTACT PLATING ⑪	NOTES
69255-X01YLF	-	-	15.62/.615	UNKEYED	ALL	GXT	-
-X02YLF	1,25 /,050	2,69 /,106	15.62/.615	KEYED	ALL	GXT	-
-X03YLF	-	-	15.62/.615	UNKEYED	2,3,4,5,6,7	GXT	-
-X04YLF	-	-	15.62/.615	UNKEYED	ALL	0,76um / 30u" Au	-
-X05YLF	-	-	15.62/.615	UNKEYED	ALL	1,27um / 50u" Au	-
-X06YLF	1,25 /,050	2,69 /,106	15.62/.615	KEYED	ALL	1,27um / 50u" Au	-
-X07YLF	-	-	15.62/.615	UNKEYED	ALL	GXT	NOTE 1
-X08YLF	-	-	15.62/.615	UNKEYED	3,4,5,6	GXT	-
-X09YLF	-	-	15.62/.615	UNKEYED	ALL	GXT	NOTE 6
-X10YLF	-	-	13.62/.536	UNKEYED	ALL	GXT	NOTE 6

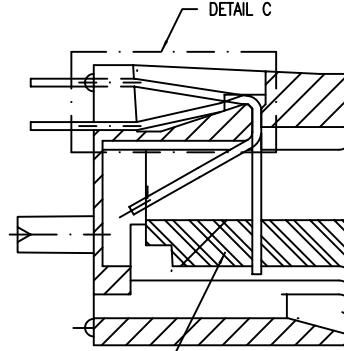


KEYED STYLE

SPECIAL BEND REQUIRED BY CUSTOMER FOR P/N 69255-001BLF

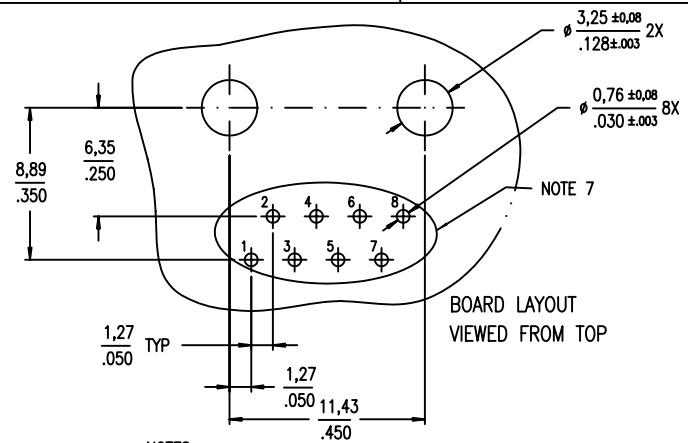


DETAIL C (OPTIONAL DESIGN)




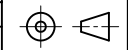
KEYWAY OPTION ON 69255-002LF & -006LF ONLY.

SECTION B-B



NOTES :

- ① SPECIAL PACKAGING.
- 2 GXT IS 0,76um / 30u" MIN GXT WITH Au FLASH OVER 1,27um / 50u" MIN Ni.
- ③ SOLDER TAIL LENGTH :  
 $X = 0 [3,18 \pm 0,51 / .125 \pm .020]$   
 $X = 1 [8,13 \pm 0,51 / .320 \pm .020]$   
 $X = 2 [5,30 \pm 0,51 / .208 \pm .020]$   
 $X = 3 [3,70 \pm 0,51 / .145 \pm .020]$   
 [ FOR X = 1 TO 2 , WIRE TRUE POSITION IS NOT APPLICABLE. ]  
 [ PACKAGING SPEC. IS GES-14-428 ]
- ④ COLOR OF HOUSING :  
 Y = NIL (BLACK HOUSING)  
 Y = W (WHITE, RAL1013 HOUSING)
- ⑤ SPECIAL REQUIREMENT :  
 SEE DETAIL C FOR P/N 69255-001BF FOR FEATURE DETAILS.
- ⑥ NO PANEL STOPS ON -X09Y AND -X10Y.
- ⑦ THIS PIN NUMBERING OPPOSITE TO FCC, PART 68, SUB-PART F REQUIREMENTS
- ⑧ PART NUMBERS WITH LF IN THE END ARE LEAD FREE.
- 9 THIS PRODUCT MEETS EUROPEAN UNION DIRECTIVES AN OTHER COUNTRY REGULATION AS DESCRIBED IN GS-22-008.
- 10 THE HOUSING TEMPERATURE WITHSTAND EXPOSURE TO 260°C PEAK TEMPERATURE FOR 15 SECONDS IN A WAVE SOLDER APPLICATION WITH A 1.5 MM MINIMUM THICK CIRCUIT BOARD. SEE APPLICATION NOTES/PROCEDURES IF THEY ARE AVAILABLE.
- ⑪ PLATING OPTION:  
 MAY BE EITHER GOLD OR GXT PLATED AT MANUFACTURER'S OPTION.

mat'l. code				tolerances unless otherwise specified		CUSTOMER COPY	 www.fciconnect.com
ltr	ecn no	dr	date	linear	.xx ±.01/.x±.3		
AC					.xxx ±.005/.xx±.13		8 POS VERTICAL P.C.B. MOD JACK ASSY
				angles	.xxx ±.0020/.xxx±.051		
				dr	0° ±2°	scale	size/ dwg no
				enr	JANET 2/22/00	3.5/1	A
				chr	M.CHENG 12/19/00		69255
				appd	M.CHENG 12/19/00		code -
sheet index	revision sheet						sheet 2 of