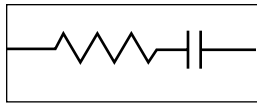


Integrated Passive Components (IPC)



|Z| Chip – 0603 Series Resistor/Capacitor

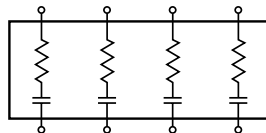
|Z| Array – 0612 4 Element Array



|Z| Chip

Stock Part Values

Part Number	Capacitance	Resistance
Z1D13Y470M101KAT2A	47pF	100 ohms
Z1D13Y680M510KAT2A	68pF	51 ohms
Z1D13Y101M470KAT2A	100pF	47 ohms
Z1D13Y151M330KAT2A	150pF	33 ohms



|Z| Array

Stock Part Values

Part Number	Capacitance	Resistance
Z3A43Y470M101KAT2A	47pF	100 ohms
Z3A43Y680M510KAT2A	68pF	51 ohms
Z3A43Y101M470KAT2A	100pF	47 ohms
Z3A43Y470M470KAT2A	47pF	47 ohms

Performance Characteristics

Capacitance Performance	
Dielectric, TCC	0±500 ppm/°C
Capacitor Tolerance	±20%
WVDC	25V
DF (1kHz)	2.5% Max.
Resistor Performance	
Tolerance	±10%
TCR	±250 ppm/°C

HOW TO ORDER

Z 1 D 1 3 Y 680 M 510 K A T 2 A

① ② ③ ④ ⑤ ⑥ ⑦ ⑧ ⑨ ⑩ ⑪ ⑫ ⑬ ⑭

① AVX Style

② AVX Size: 1=0603, 3=0612

③ D=Discrete, A=Array

④ Number of Elements

⑤ Voltage: 3=25V

⑥ Dielectric: Y=500ppm/C

⑦ Capacitance Code

⑧ Capacitance Tolerance

⑨ Resistance Code

⑩ Resistance Tolerance

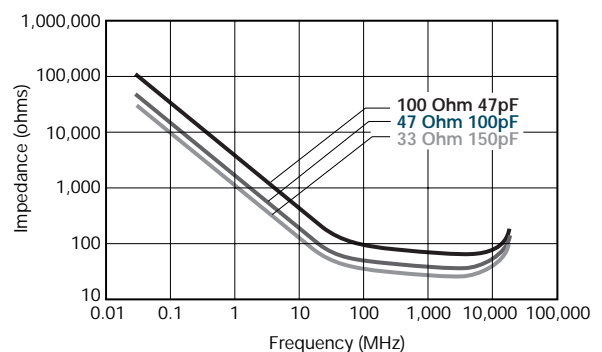
⑪ Failure Rate

⑫ Termination Code

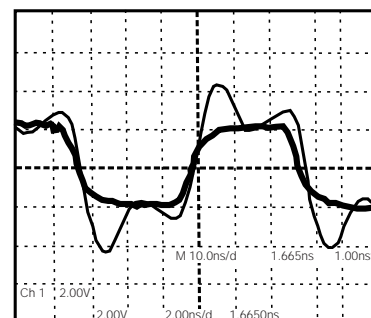
⑬ Packaging Code

⑭ Special Code

Impedance Characteristics



|Z| Chip Termination of an 80 MHz Transmission Line



Ringing in an 80 MHz clock pulse (light line) is eliminated when terminated with a 100pF/47 ohm |Z| Chip (bold line)

Additional information on this product is available from AVX's catalog or AVX's FAX Service. Call 1-800-879-1613 and request document #029. Visit our website <http://www.avxcorp.com>

