

PRODUCT NUMBER

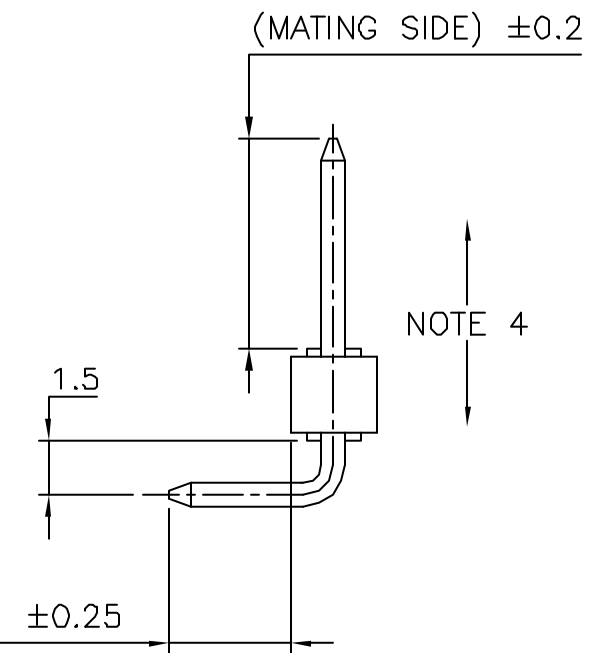
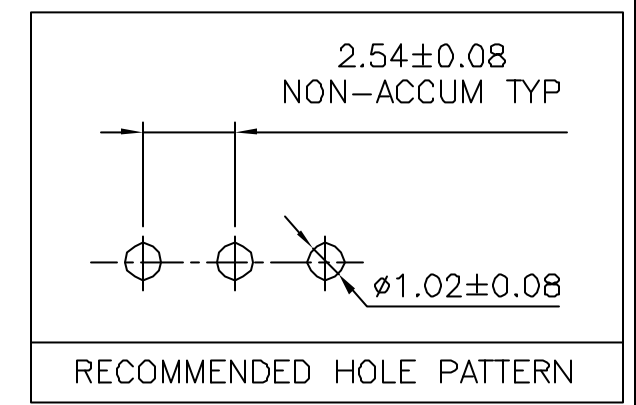
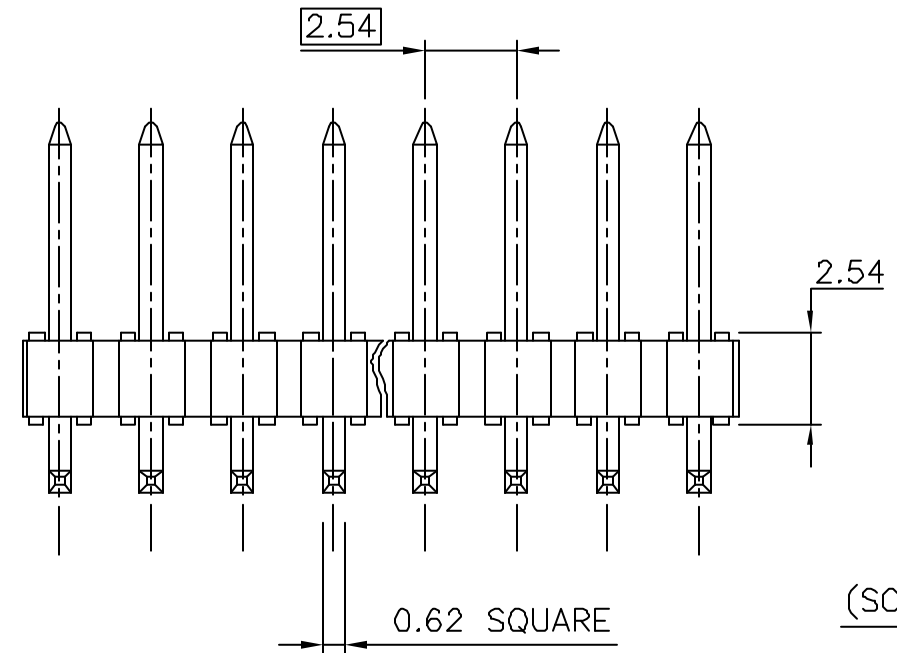
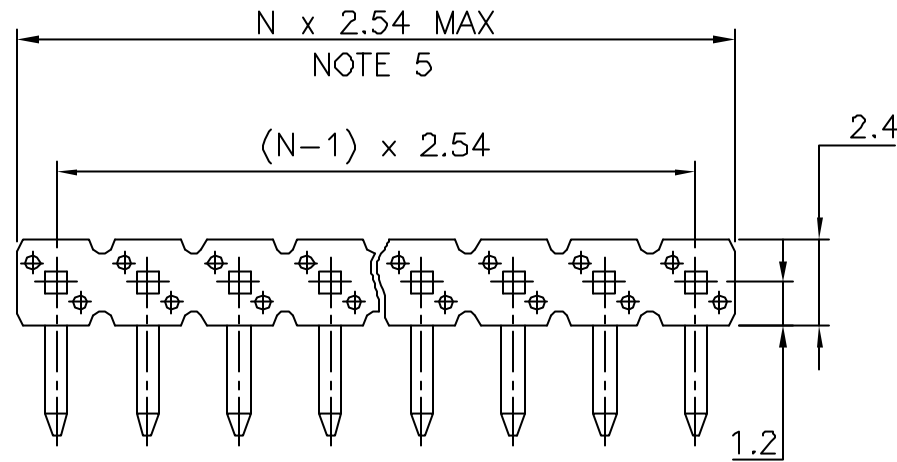
77315-YXX-XXLF

WHEN REQUIRED, ADD SUFFIX LETTER "LF"
INDICATES THE PRODUCT IS RoHS
COMPATIBLE, SEE NOTE 7

TOTAL NB OF POSITIONS 02 TO 36
PIN STYLE SEE SHEET 2
PLATING SEE SHEET 2

NOTES:

1. HOUSING MAT'L : HIGH TEMPERATURE THERMOPLASTIC. UL94V-0 COLOR: BLACK
2. PIN MATERIAL : PHOSPHOR BRONZE
3. PRODUCT PACKAGED IN POLY BAGS.
4. 9N MIN RETENTION IN EITHER DIRECTION
5. TO DETERMINE DIMENSIONS :
N = NUMBER OF POSITIONS PER ROW
EXAMPLE : 8 POS $N \times 2.54 = 20.32\text{mm}$
6. UNDERPLATING : $1.27\mu\text{m}$ Ni MIN
7. RoHS COMPATIBLE PRODUCT SPECIFICATIONS
 - a - PLATING:
 - "LF" MEANS THE PRODUCT IS LEAD-FREE, $2\mu\text{m}$ MINIMUM MATTE TIN OVER $1.27\mu\text{m}$ MINIMUM NICKEL UNDERPLATE.
 - b - MANUFACTURING PROCESS COMPATIBILITY
 - THE HOUSING WILL WITHSTAND EXPOSURE TO $260^{\circ}\text{C} \pm 5^{\circ}\text{C}$ SOLDER BATH TEMPERATURE FOR 5 SECONDS IN A WAVE SOLDER APPLICATION WITH A 1.6mm MIN THICK CIRCUIT BOARD.
 - c - LABELING:
 - MEETS PACKAGING SPECS AS PER GS-14-920
 - d - LEGAL STATEMENT: SEE GS-22-008



mat'l. code SEE NOTES				tolerances unless otherwise specified			CUSTOMER COPY	ELECTRONICS www.fciconnect.com	
ltr	ecn no	dr	date	linear	.x ± 0.3		projection	title	
U	F20563	JCO	02.10.16		.xx ± 0.15				
V	F04-0129	LMU	04.02.04	angles	.xxx ± 0.05			UNSHR.HEADER RA SR TMT	
W	F04-0167	JOC	04.04.05						
X	F04-0362	LMU	04.11.29	dr	D.LE	01.01.24	mm	product family	
Y	F05-0221	LMU	05.07.13	engr	JM.C	01.01.24			BERGSTIK
				chr	JM.C	01.01.24	scale	size	
T	F20507	LMU	02.08.26	appd	JF.N	01.01.24			5:1
sheet	revision	Y	W					A3	77315
index	sheet	1	2						
									213
									sheet
									1 of 2

Tous droits réservés. Réimpression ou reproduction sans autorisation de FCI Electronics S.A. est formellement interdite.

All rights strictly reserved. Reproduction or reuse in third parties in any form is prohibited without written authority from the Property of FCI Electronics S.A. Copyright FCI Electronics S.A.

CATALOGUE RANGE

PLATING	PIN STYLE	MATING	SOLDER
1/4/8	01	5.72	2.57
1/4/8	18	5.84	3.05
1/4/8	24	6.75	2.85

PLATING
 1 = 0.76µm GOLD ON CONTACT AREA
 3.81µm TIN-LEAD ON TAIL
 4 = 3.81µm TIN-LEAD ON CONTACT AREA
 AND ON TAIL
 8 = 0.38µm GOLD ON CONTACT AREA
 3.81µm TIN-LEAD ON TAIL
 - WHEN "LF" IS REQUIRED, 2µm MATTE
 TIN OVER 1.27µm MIN NICKEL IS
 PROVIDED INSTEAD OF TIN-LEAD

APPLICATION SPECIFIC

PLATING	PIN STYLE	MATING	SOLDER
1/4/8	7	5.72	5.11
1/4/8	22	11.71	3.2
1/4/8	25	8.07	3.05
1/4/8	26	8.2	12.6
1/4/8	27	5	3.9
1/4/8	28	3.1	3.1

PLATING
 1 = 0.76µm GOLD ON CONTACT AREA
 3.81µm TIN-LEAD ON TAIL
 4 = 3.81µm TIN-LEAD ON CONTACT AREA
 AND ON TAIL
 8 = 0.38µm GOLD ON CONTACT AREA
 3.81µm TIN-LEAD ON TAIL
 - WHEN "LF" IS REQUIRED, 2µm MATTE
 TIN OVER 1.27µm MIN NICKEL IS
 PROVIDED INSTEAD OF TIN-LEAD



mat'l. code SEE NOTES				tolerances unless otherwise specified			CUSTOMER COPY	FCI ELECTRONICS www.fciconnect.com	
ltr	ecn no	dr	date	linear	.x ±0.3		projection 	title UNSHR.HEADER RA SR TMT	
U	F20563	JCO	02.10.16		.xx ±0.15				
V	F04-00362	LMU	04.11.29		.xxx ±0.05				
W	F0F5-022	LMU	05.07.13	angles			mm ←→ scale 5:1	product family BERGSTIK	
				dr	D.LE	01.01.24		code	
				enr	JM.C	01.01.24		size dwg no	
				chr	JM.C	01.01.24		213	
				app	JF.N	01.01.24	sheet		
sheet index		revision sheet						2 of 2	