

Pinlatch®

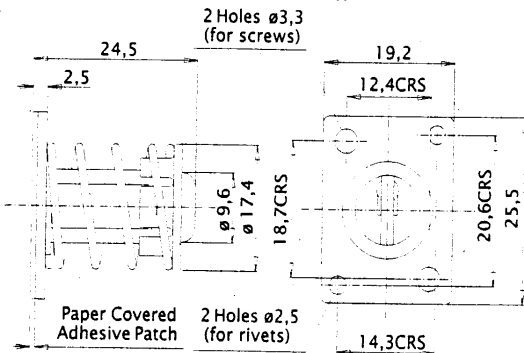


This fastener is totally concealed and offers a push panel action with quick easy assembly requiring only one round hole in the support structure. Installation is by self adhesive pad to the underside of the panel. For applications requiring a higher locked loading, the latch may be riveted to its panel. To overcome misalignment or when the support material is softer than mild steel, we offer a floating receptacle.

Pinlatch is patented and licenced by Latchways® Ltd.



Part No. 225 100 500



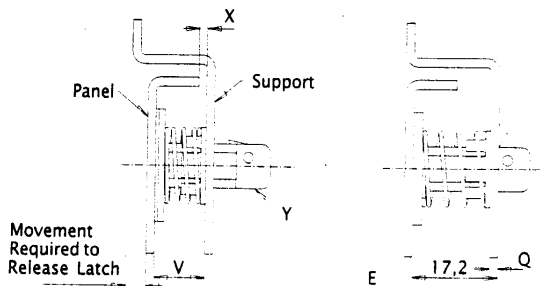
INSTALLATION PROCEDURE

1. Prepare a suitable support hole as A or B. The slot B may be used where float greater than $\pm 0,2$ is required.
2. Engage the latch centrally into the support hole. Press inwards and release. The cam will rotate and lock behind the support.
3. Remove the protective paper from the latch base (DO NOT TOUCH ADHESIVE). Check the latch is central in the support hole.
4. Gently close the door against the latch and press home firmly.
5. The latch will adhere to the inside of the door and release from the support.

NOTE

- A. The door surface must be clean and dry to ensure adhesive bond.
- B. When fitted with adhesive the latch is designed for intermittent loads only. DO NOT subject these latches to continuous loads.
- C. Holes for screws or rivet fixing method are provided.
- D. Suitable for doors with a hinge to latch distance greater than 250mm.

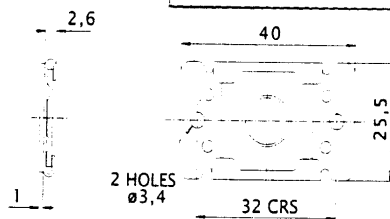
Application - Standard



MATERIAL

- Body - Diecast Zinc with a self adhesive backing, protected by paper. Finish natural zinc.
- Spring - Stainless Steel.
- Pawl - Stainless Steel.
- Slide - Black Thermoplastic.
- Q = Support Range 3,0 Max. 1,2 Min.
- E = 4,5mm. The distance the latch may eject when released.
- V = 8,5mm. min. When the latch is fully compressed during operation. Ensure clearance remains at points X & Y.
- Float = $\pm 0,2$ mm.

Floating Receptacle - Part No. 225 600 200

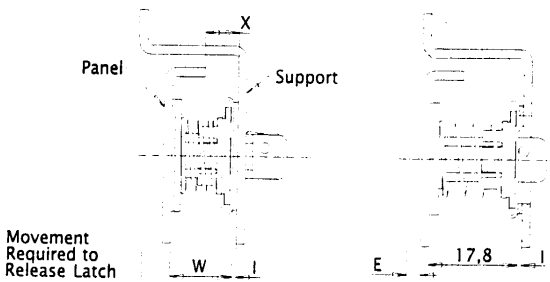


Paper Covered Adhesive Patch (Supplied separately)

INSTALLATION PROCEDURE

1. The receptacle may be riveted in position or fixed with an adhesive patch supplied separately.
2. For adhesive fitting, check the receptacle is clean, remove one paper backing from the adhesive patch and press it firmly onto the receptacle. DO NOT TOUCH THE ADHESIVE. Make sure that the central receptacle hole is not covered by the patch.
3. Remove the second paper, and press the receptacle firmly onto the pre-cleaned support. Ensure that the large housing hole is aligned with the support hole.
4. Engage the Pinlatch into the receptacle and centralise it.
5. Complete the assembly as for the standard latch.

Application - with Floating Receptacle



MATERIAL

- Receptacle Housing & Plate - Stainless steel
- An adhesive retaining pad is supplied separately.
- E = 4,5mm. The distance that the latch may eject when released.
- W = 10,0mm min. When the latch is fully compressed during operation. Ensure clearance remains at X & Y.
- Float = $\pm 1,0$ mm max.

Panel Preparation

Riveted Latch Fixing



Standard Support

A or B

10,0 $\pm 0,2$

Floating Receptacle

$\phi 18,5^{+0,5}$ $\phi 18,5^{+0,5}$

2 Holes $\phi 3,6$

32

NOTE: