

DRV8821/DRV8823 User's Guide

This document is provided as a supplement to the DRV8821/DRV8823 datasheet. It details the hardware implementation of the CPG003 DRV8821-23EVM-001 Customer Evaluation Module (EVM).

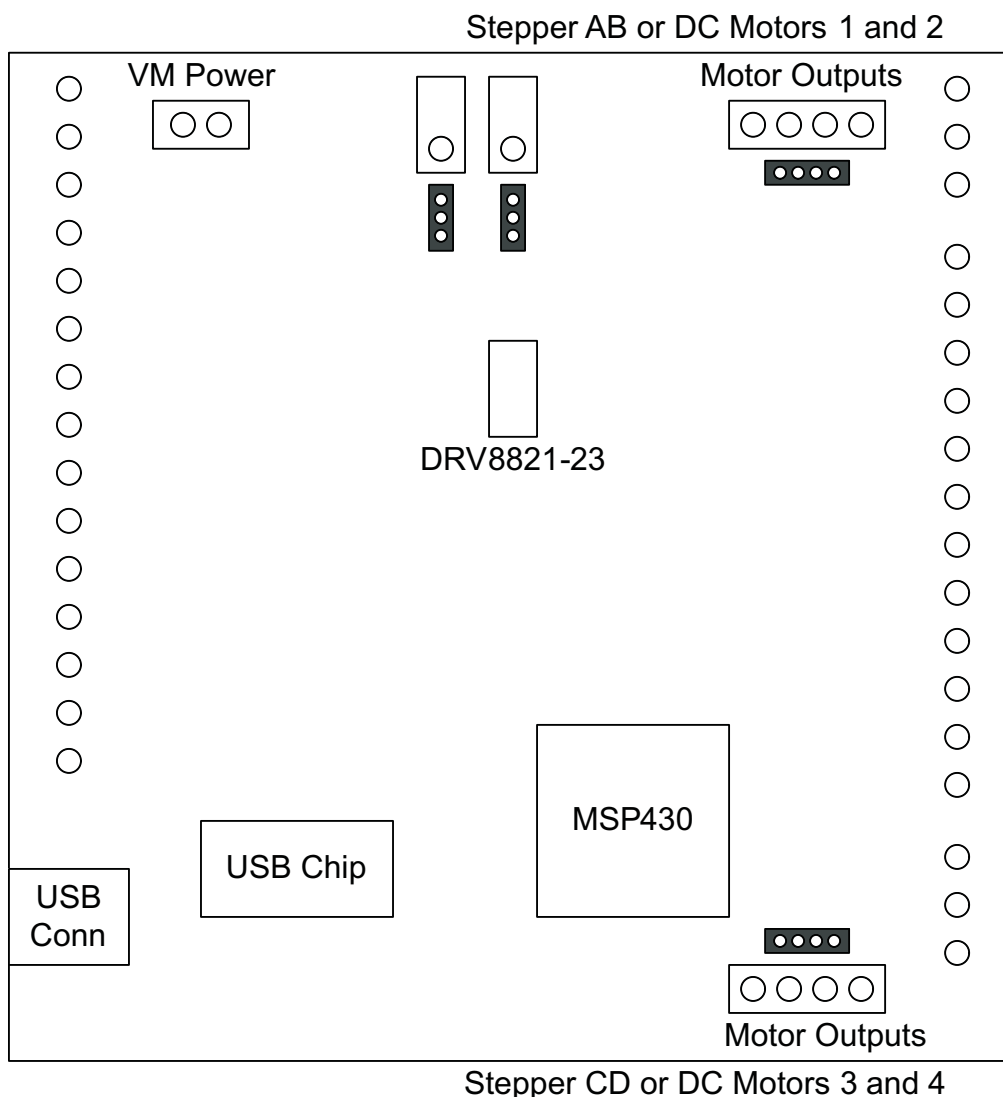
Contents

1	Block Diagram	2
1.1	Power Connectors	2
1.2	Test Stakes	2
1.3	Jumpers	3
1.4	Motor Outputs	3
2	Installing Drivers And Software	4
2.1	Installing the FTDI USB Driver	4
2.2	Installing the CPG003_DRV882123-001 Evaluation Board Windows Application Software	4
2.3	Running the Windows Application Software	4
3	The Windows Application	5
3.1	The Menu	6
3.2	DRV8821 GPIO Control Signals	7
3.3	Updating DAC Output for Current Control (VREF)	8
3.4	Operating the Stepper Motor (DRV8821)	8
3.5	Operating the Motors (DRV8823)	11
3.6	Updating DAC Output for Reference Voltage	12
4	Schematic	13

List of Figures

1	VREF Select Jumpers (JP1 and JP2).....	3
2	DECAY Select Jumpers (JP3 and JP4).....	3
3	CPG003_DRV8821-23EVM-001_R1p0.exe Main Screen (DRV8821)	5
4	CPG003_DRV8821-23EVM-001_R1p0.exe Main Screen (DRV8823)	6
5	Acknowledgement Text Box	7
6	Control Signals Frame.....	7
7	Current Control Frame	8
8	Turning the Stepper Motor	9
9	Speed control Frame	9
10	Step Control Frame	10
11	Motor A and B Frame	11
12	Reference Voltage Frame	12

1 Block Diagram



1.1 Power Connectors

The DRV8821/DRV8823 Customer EVM offers access to VM (Motor Voltage) power rail via a terminal block (J1). A set of test clips in parallel with the terminal block allows for the monitoring of the input power rail.

User must apply VM according to datasheet recommended parameters.

NOTE: VDD for logic and microcontroller is derived from USB interface.

1.2 Test Stakes

Every pin on the DRV8821/DRV8823 device has been brought out to a test stake. A label on the silkscreen identifies each signal.

For those pins that change functionality depending on device flavor, a table is provided with corresponding function name on its particular column.

1.3 Jumpers

There are two styles of jumpers on the DRV8821-23EVM: two pin jumpers (JP3 and JP4) and three pin jumpers (JP1 and JP2).

Two pin jumpers are used to set AB DECAY or CD DECAY HI or LO.

Three pin jumpers are used to select the VREF from a pot or from the microcontroller's DAC outputs.

1.3.1 VREF Select Jumpers (JP1 and JP2)

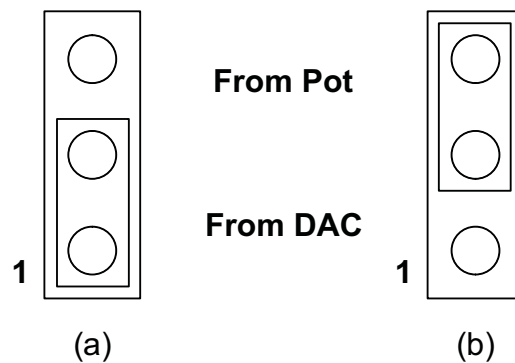


Figure 1. VREF Select Jumpers (JP1 and JP2)

To configure the VREF select (either AB or CD) jumper, (a) Use position JPx-1:2 to select the MSP430 DAC output (default). (b) Use position JPx-2:3 to select the respective variable resistance potentiometer. These jumpers should not be left open as a lack of a reference voltage on the device will minimize current sourcing into the respective H Bridge, resulting in very poor motion or no motion at all.

1.3.2 DECAY Select Jumpers (JP3 and JP4)

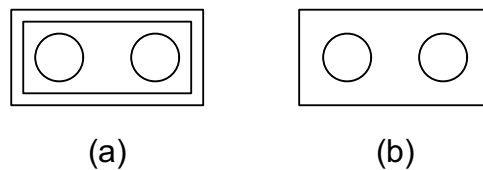


Figure 2. DECAY Select Jumpers (JP3 and JP4)

To configure the DECAY select jumper: (a) place a jumper to set the respective DECAY signal HI. (b) remove the jumper to use internal pull down resistor and set the DECAY signal to LO.

1.4 Motor Outputs

There are three ways of connecting the bipolar stepper motor (for DRV8821) or the dual DC motors (for DRV8823) into the CPG003_DRV882123EVM-001 evaluation module: four pin header (J4 and J5), four position terminal block (J2 and J3) and test clips. We do not recommend the connection of a stepper motor into the test clips as these are Kelvin connections and not rated for high current output.

2 Installing Drivers And Software

2.1 Installing the FTDI USB Driver

Instructions on how to install the FTDI USB driver on a Windows based computer are detailed in the "USB_Drivers_Install_Readme.pdf" file supplied with the CD inside the USB_Driver folder.

2.2 Installing the CPG003_DRV882123-001 Evaluation Board Windows Application Software

Copy the contents of the "WindowsApplication" folder provided within the CD, into your hard disk.

2.3 Running the Windows Application Software

To run the application, double click the CPG003_DRV8821-23EVM-001_R1p0.exe application icon found on the same folder the application was extracted into.

3 The Windows Application

The CPG003_DRV8821-23EVM Windows application is the software counterpart for the CPG003_DRV8821-23EVM-001 EVM. It allows the PC computer to connect to the MSP430F1612 microcontroller through an USB interface chip. Once connection is established and commands are sent, microcontroller takes care of configuring control signals and administering certain levels of automation, such as STEP generation (for DRV8821) or SPI communications (for DRV8823).

The graphical user interface (GUI) has been designed to allow for all of the DRV8821/DRV8823 device's functionality to be tested without having to intervene with the hardware, except for the proper configuration of jumpers, when needed.

Figure 3 and Figure 4 show the CPG003_DRV8821-23EVM-001_R1p0.exe main screen. The application is divided into two tabs: One for the DRV8821 and one for the DRV8823. The menu contains items to configure and enable/disable the serial port.

The DRV8821 tab contains frames with GPIO control for DRV8821's control signals, speed, acceleration and number of steps control for both stepper motors AB and CD, and current control through the microcontroller's DACs.

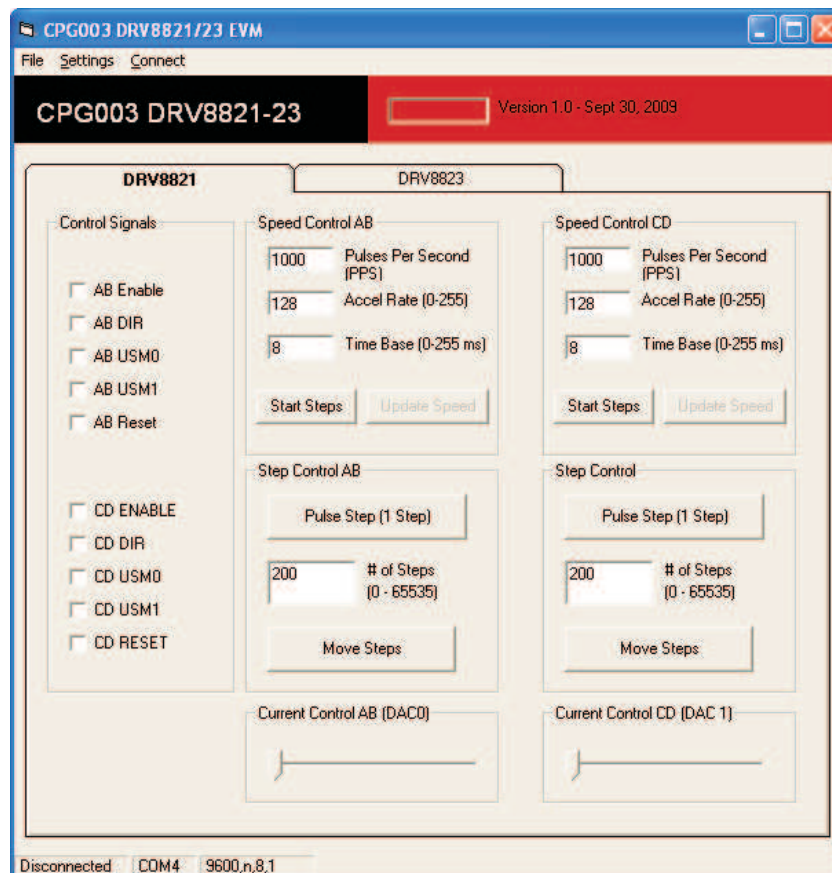


Figure 3. CPG003_DRV8821-23EVM-001_R1p0.exe Main Screen (DRV8821)

The DRV8823 tab contains two frames with the bits that make up the 16-bit serial registers which contain the control signals to properly articulate each motor. Also GPIO signals such as Reset and SLEEPn are made accessible through check boxes. Finally, two sliders adjust the reference voltage through the microcontroller's DAC outputs.



Figure 4. CPG003_DRV8821-23EVM-001_R1p0.exe Main Screen (DRV8823)

3.1 The Menu

3.1.1 SETUP Register

The menu at the top of the application offers a series of quick options for how the COM port is to behave.

File → Exit - Terminates the application.

Settings → Port - Selects from COM1 to COM4. Default is COM4.

The Serial Port actual port number defaults to what we have specified on the “USB_Drivers_Install_Readme.pdf”. However, any port between COM 1 and COM 4 are equally usable.

Connect – Opens the Serial Port. When this menu item is pressed, its caption changes to “Disconnect”.

Disconnect – Closes the Serial Port. When this menu item is pressed, its caption changes to “Connect”.

After opening the application, the order of events should be:

1. Go to Settings → Port and choose the COM port where the FTDI device has been configured to work. If the COM port is 4, then this step can be skipped, as application defaults to COM4.
2. Press Connect. If the port is available, the menu changes the “Connect” caption to “Disconnect”. Press Disconnect in order to disable the serial communications.
3. <1><0><0> should return on the text box as an acknowledge. The text box also changes from red to green, as shown in [Figure 5](#).
4. The application is ready for use.

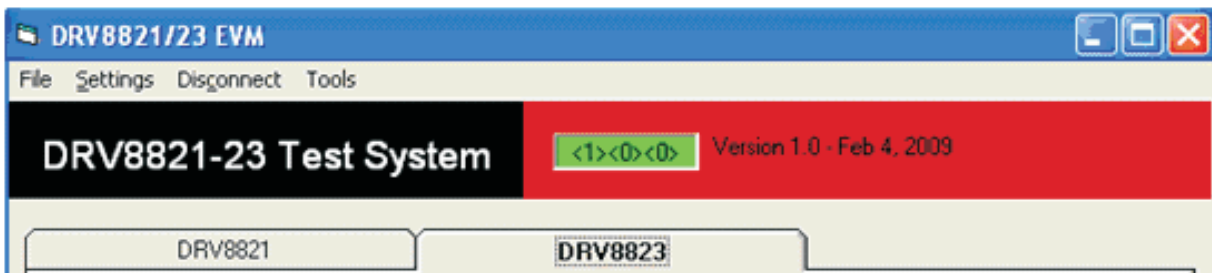


Figure 5. Acknowledgement Text Box

3.2 DRV8821 GPIO Control Signals

Once the application is communicating with the interface board, the control signals can be actuated by checking or un-checking check boxes on the Control Signals frame.

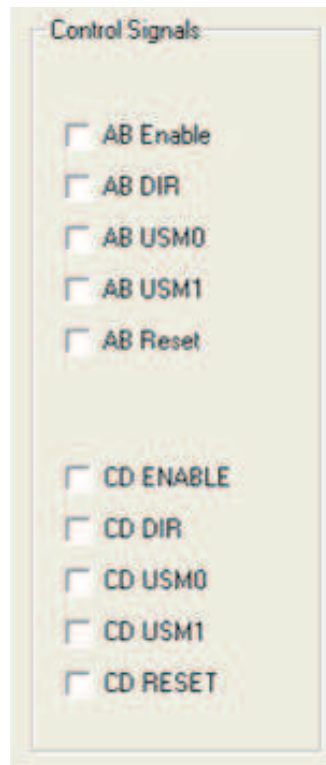


Figure 6. Control Signals Frame

A checked checkbox translates to a HI level on the respective control signal. Un-checked checkboxes translate to a LO level on the respective control signals.

3.3 Updating DAC Output for Current Control (VREF)

If the DRV8821 has been configured to accept VREF analog voltages through the microcontroller DAC outputs (refer to Jumpers section), then the slider bar on the Current Control frame can be used to set the VREF voltage.



Figure 7. Current Control Frame

The 12-bit DAC channels, 0/1, are connected to the DRV8821/DRV8823 VREF analog inputs ABVREF and CDVREF. Changing the DAC digital value from 0 to 4095 changes the analog voltage at the respective VREF pin from 0 V to 2.5 V respectively, following Equation 1.

$$V_{REF} = DAC_VALUE \cdot \frac{2.5\text{ V}}{4095} \quad (1)$$

Where:

1. VREF is the output voltage.
2. DAC_VALUE is a number from 0 to 4095.

3.4 Operating the Stepper Motor (DRV8821)

3.4.1 Turning the Stepper Motor

The Windows application, in conjunction with the MSP430F1612 microcontroller, utilizes a series of timers to coordinate the rate of steps sent to the device. Once all the control signals are configured accordingly, (ENABLE_n = LO, SLEEP_n = HI, RESET_n = HI; DIR, USM0 and USM1 can be HI or LO depending on preferred mode of operation; SR_n must be L, if external diodes are not populated), the motor is ready to be turned.

The DRV8821-23EVM-001 customer EVM allows for the possibility of coordinating step rates such that accelerating and decelerating profiles are achieved. Both acceleration and deceleration are controlled by the same parameters, acceleration rate and time base.

When the motor starts, it always starts at the slowed PPS speed (62 pulses per second). The controller will accelerate the motor in order to reach the PPS speed. Acceleration rate is an 8-bit number (0 to 255) that gets added to the current PPS speed and time base is an 8-bit number (0 to 255) that specifies how many milliseconds will elapse from one speed increase to the next. Once the specified PPS has been achieved, the acceleration stops.

The inverse of the above described will command the motor to stop.

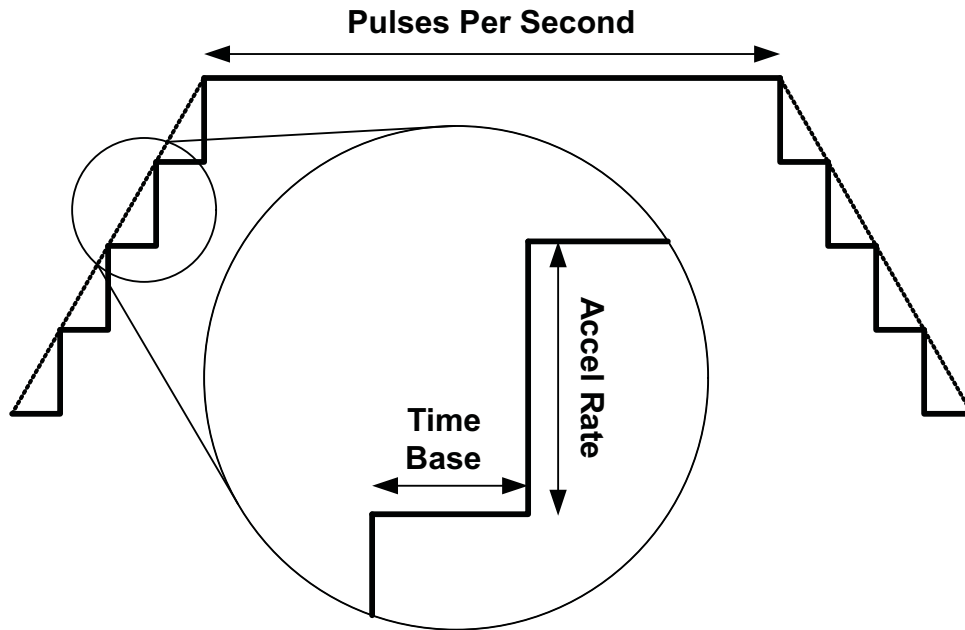


Figure 8. Turning the Stepper Motor

The Windows application frame to control speed, acceleration and deceleration, as well as motor start and stop is shown in [Figure 9](#).

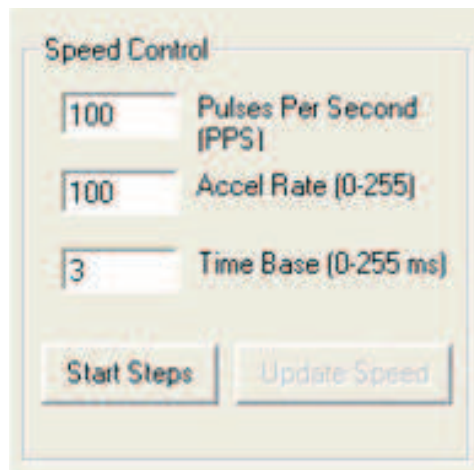


Figure 9. Speed control Frame

Pressing the “Start Steps” button, will start the timer and pulses will be generated at the rate specified by the decimal number at the PPS text box. Once the “Start Steps” button is pressed it becomes the “Stepping” button. Press the “Stepping” button to stop the stepper motion.

When the motor is stepping, the “Update Speed” button becomes enabled. Speed can be updated by modifying the PPS text box and then pressing the “Update Speed” button. The “Speed” button is disabled every time the motor is not turning because the stepping has been halted by pressing the “Stepping” button.

3.4.2 Step by Step control

The Step Control frame has a series of tools to control the stepping of the motor on a predetermined number of steps fashion.

The “Pulse Step” button allows for a single step to be issued. Remember that a STEP takes place when STEP goes from LO to HI.

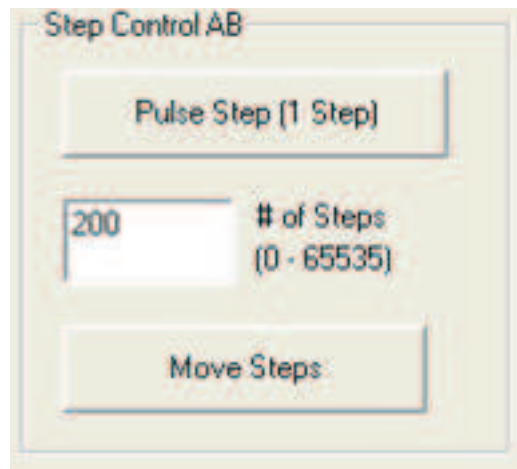


Figure 10. Step Control Frame

To move the motor a number of steps and then stop, fill the # of Steps text box with a decimal number from 0 to 65535 and the motor will move that number of steps at the speed specified on the PPS text box. No acceleration or deceleration takes place under this function.

3.5 Operating the Motors (DRV8823)

The Windows application gives access to both serial registers on the DRV8823 bit by bit, very similar to the GPIO section on the DRV8821 tab. If the “Auto Update” checkbox is checked, checking any of the checkboxes on the respective frame, will update the serial register. If the “Auto Update” checkbox is unchecked, the button “Write Motor x” must be pressed for these bit states to be transmitted to the device.

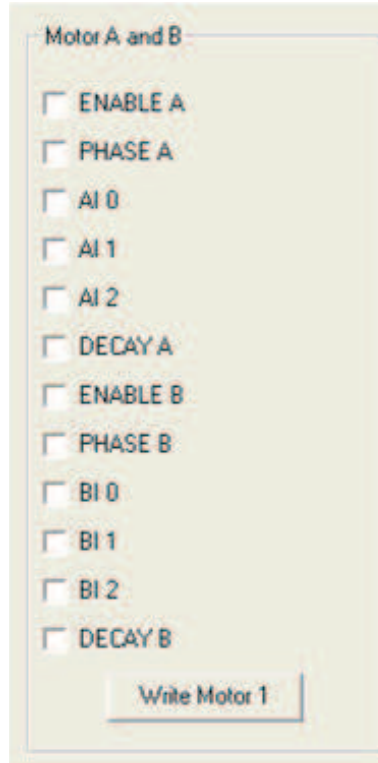


Figure 11. Motor A and B Frame

A checked checkbox translates to a 1 on the respective serial register bit. Un-checked checkboxes translates to a 0 on the respective serial register bits.

3.6 Updating DAC Output for Reference Voltage

If the DRV8823 has been configured to accept VREF analog voltages through the microcontroller's DAC outputs (refer to Jumpers section), then the slider bar on the Reference Voltage frame can be used to set the VREF voltage.

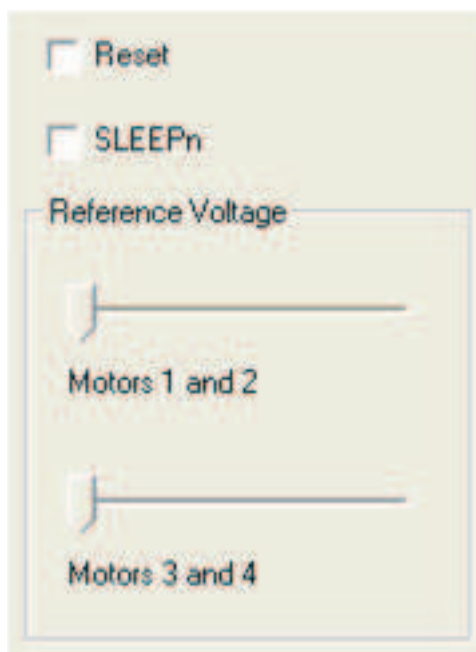


Figure 12. Reference Voltage Frame

The 12-bit DAC channels, 0/1, are connected to the DRV883 VREF analog inputs ABVREF and CDVREF. Changing the DAC digital value from 0 to 4095 changes the analog voltage at the respective VREF pin from 0 V to 2.5 V respectively, following [Equation 2](#).

$$V_{REF} = DAC_VALUE \cdot \frac{2.5\text{ V}}{4095} \quad (2)$$

Where:

1. VREF is the output voltage.
2. DAC_VALUE is a number from 0 to 4095.

4 Schematic

A schematic is available in the form of a PDF file ("CPG003_Schematic.pdf") inside the EVM_Related folder on the supplied CD.

IMPORTANT NOTICE

Texas Instruments Incorporated and its subsidiaries (TI) reserve the right to make corrections, modifications, enhancements, improvements, and other changes to its products and services at any time and to discontinue any product or service without notice. Customers should obtain the latest relevant information before placing orders and should verify that such information is current and complete. All products are sold subject to TI's terms and conditions of sale supplied at the time of order acknowledgment.

TI warrants performance of its hardware products to the specifications applicable at the time of sale in accordance with TI's standard warranty. Testing and other quality control techniques are used to the extent TI deems necessary to support this warranty. Except where mandated by government requirements, testing of all parameters of each product is not necessarily performed.

TI assumes no liability for applications assistance or customer product design. Customers are responsible for their products and applications using TI components. To minimize the risks associated with customer products and applications, customers should provide adequate design and operating safeguards.

TI does not warrant or represent that any license, either express or implied, is granted under any TI patent right, copyright, mask work right, or other TI intellectual property right relating to any combination, machine, or process in which TI products or services are used. Information published by TI regarding third-party products or services does not constitute a license from TI to use such products or services or a warranty or endorsement thereof. Use of such information may require a license from a third party under the patents or other intellectual property of the third party, or a license from TI under the patents or other intellectual property of TI.

Reproduction of TI information in TI data books or data sheets is permissible only if reproduction is without alteration and is accompanied by all associated warranties, conditions, limitations, and notices. Reproduction of this information with alteration is an unfair and deceptive business practice. TI is not responsible or liable for such altered documentation. Information of third parties may be subject to additional restrictions.

Resale of TI products or services with statements different from or beyond the parameters stated by TI for that product or service voids all express and any implied warranties for the associated TI product or service and is an unfair and deceptive business practice. TI is not responsible or liable for any such statements.

TI products are not authorized for use in safety-critical applications (such as life support) where a failure of the TI product would reasonably be expected to cause severe personal injury or death, unless officers of the parties have executed an agreement specifically governing such use. Buyers represent that they have all necessary expertise in the safety and regulatory ramifications of their applications, and acknowledge and agree that they are solely responsible for all legal, regulatory and safety-related requirements concerning their products and any use of TI products in such safety-critical applications, notwithstanding any applications-related information or support that may be provided by TI. Further, Buyers must fully indemnify TI and its representatives against any damages arising out of the use of TI products in such safety-critical applications.

TI products are neither designed nor intended for use in military/aerospace applications or environments unless the TI products are specifically designated by TI as military-grade or "enhanced plastic." Only products designated by TI as military-grade meet military specifications. Buyers acknowledge and agree that any such use of TI products which TI has not designated as military-grade is solely at the Buyer's risk, and that they are solely responsible for compliance with all legal and regulatory requirements in connection with such use.

TI products are neither designed nor intended for use in automotive applications or environments unless the specific TI products are designated by TI as compliant with ISO/TS 16949 requirements. Buyers acknowledge and agree that, if they use any non-designated products in automotive applications, TI will not be responsible for any failure to meet such requirements.

Following are URLs where you can obtain information on other Texas Instruments products and application solutions:

Products		Applications	
Amplifiers	amplifier.ti.com	Audio	www.ti.com/audio
Data Converters	dataconverter.ti.com	Automotive	www.ti.com/automotive
DLP® Products	www.dlp.com	Communications and Telecom	www.ti.com/communications
DSP	dsp.ti.com	Computers and Peripherals	www.ti.com/computers
Clocks and Timers	www.ti.com/clocks	Consumer Electronics	www.ti.com/consumer-apps
Interface	interface.ti.com	Energy	www.ti.com/energy
Logic	logic.ti.com	Industrial	www.ti.com/industrial
Power Mgmt	power.ti.com	Medical	www.ti.com/medical
Microcontrollers	microcontroller.ti.com	Security	www.ti.com/security
RFID	www.ti-rfid.com	Space, Avionics & Defense	www.ti.com/space-avionics-defense
RF/IF and ZigBee® Solutions	www.ti.com/lprf	Video and Imaging	www.ti.com/video
		Wireless	www.ti.com/wireless-apps